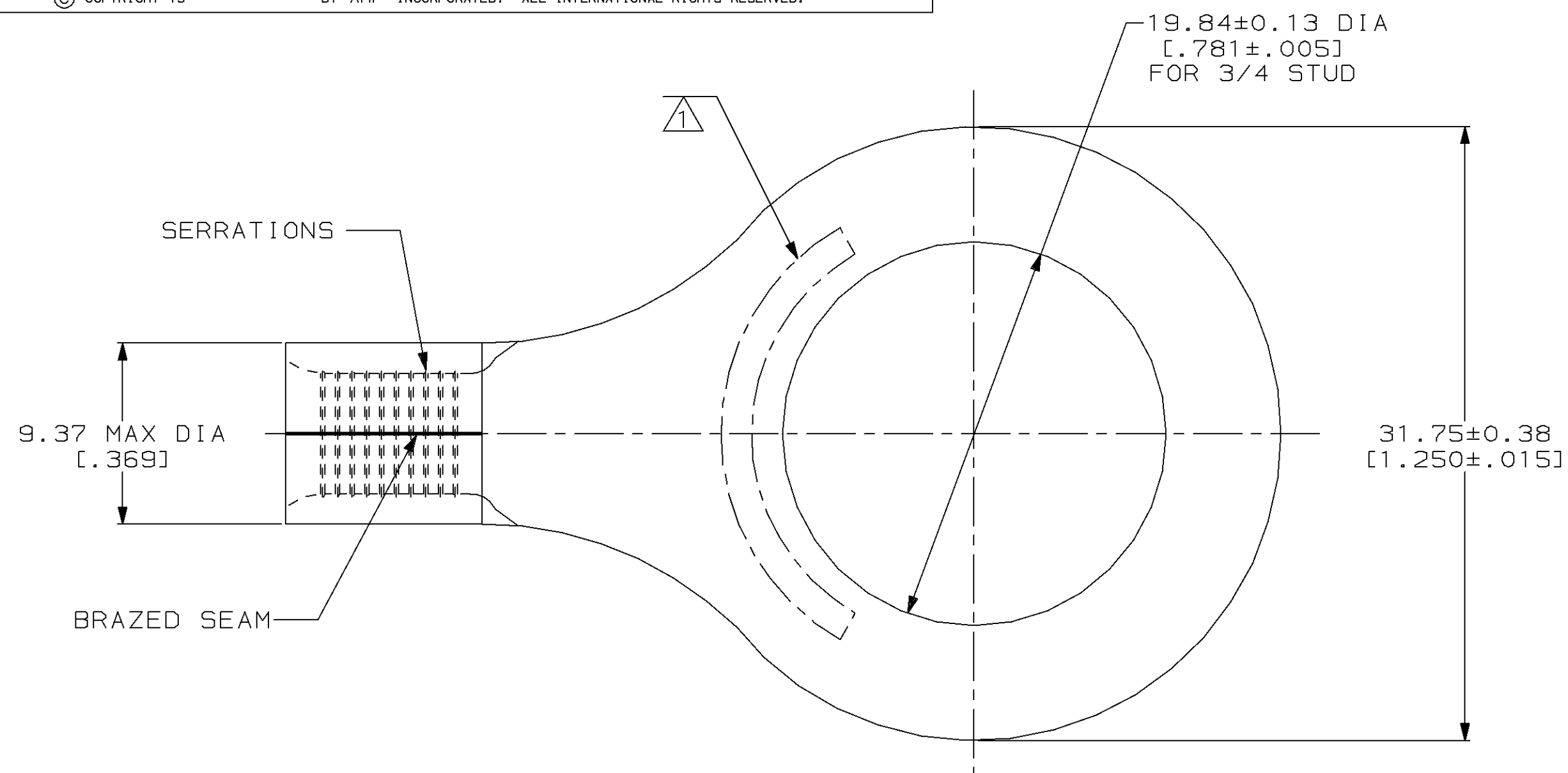


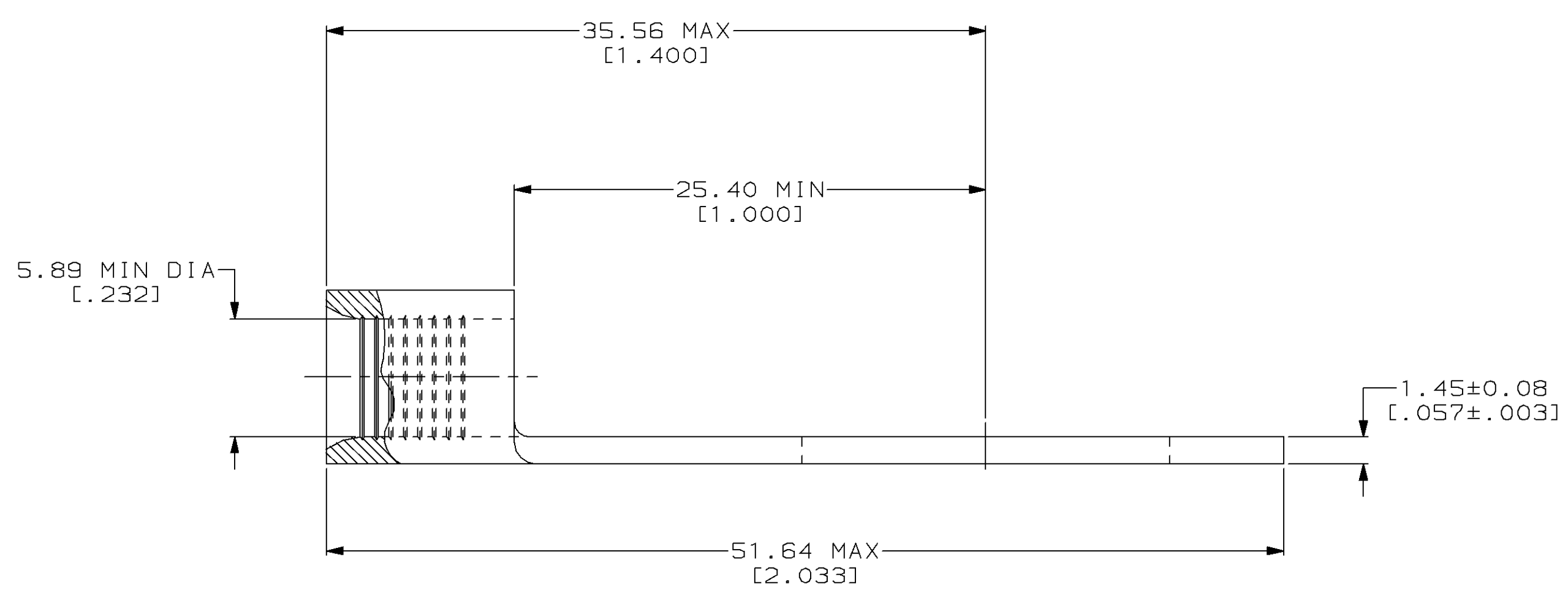
| LOC | DIST | P | F | ZONE | LTR | DESCRIPTION                    | DATE    | APPD    |
|-----|------|---|---|------|-----|--------------------------------|---------|---------|
| G   | 14   |   |   |      | C   | REV & REDRAWN PER 0720-0040-93 | 3-24-93 | APP DAP |

**METRIC**  
 DIMENSIONS LISTED IN mm [ INCHES ]



|                               |                           |
|-------------------------------|---------------------------|
| <b>AMP</b><br>WIRE RANGE      | <b>UL</b> Listed          |
| 6 AWG<br>SOLID OR STRANDED    | 6 AWG<br>STRANDED         |
| <b>SR</b> LR7189<br>Certified | MILITARY P/N<br>AND CLASS |
| 6 AWG<br>SOLID OR STRANDED    | NOT APPLICABLE            |

① STAMP AMP 6\* APPROX AS SHOWN



|   |  |  |  |                             |  |
|---|--|--|--|-----------------------------|--|
| AMP INCORPORATED<br>CUSTOMER SERVICE SYSTEMS  |  | MAX RECOMMENDED OPERATING TEMPERATURE:<br>170°C MAX  | DO NOT SCALE PRINT.<br>UNLESS SPECIFIED<br>DIMENSIONS IN mm [INCHES]<br>TOLERANCES ON:<br>2 PLC DEC ± -<br>3 PLC DEC ± -<br>ANGLES ± - | DR 3-24-93<br>TA BRINKMAN   | <b>AMP</b> AMP Incorporated<br>Harrisburg, PA 17105-3608 |
| FOR ADDITIONAL<br>PRODUCT INFORMATION OR<br>COPIES OF DRAWINGS<br>AND TECHNICAL DOCUMENTS | PRODUCT INFORMATION CENTER<br>1-800-522-6752 | VOLTAGE RATING:<br>NOT APPLICABLE  | MATERIAL<br>COPPER PER<br>ASTM B-152<br>ANNEALED   | CHK 3-24-93<br>DA PATTERSON |  |
| FOR APPLICATION<br>TOOLING INFORMATION  | TOOLING ASSISTANCE CENTER<br>1-800-722-1111  | WIRE CROSS SECTIONAL AREA RANGE:<br>10.5-16.8MM <sup>2</sup> [20,800-33,100] CIR MILS<br>SOLID OR STRANDED   | FINISH<br>TIN PLATE<br>0.00254[0.00100] MIN<br>THK PER MIL-T-10727   | APPD 3-24-93<br>DE MILLER   | NAME<br>TERMINAL, RING<br>TONGUE, SOLISTRAND™            |
| FOR ORDER ENTRY   | 1-800-526-5142                               | THIS DRAWING IS A CONTROLLED DOCUMENT FOR<br>AMP INCORPORATED. IT IS SUBJECT TO CHANGE<br>AND THE CONTROLLING ENGINEERING ORGANIZATION<br>SHOULD BE CONTACTED FOR THE LATEST REVISION. |  | APPD 3-24-93<br>JL MECKLEY  | SIZE<br>③ 00779  |
|   |  |  |  | PRODUCT SPEC<br>-           | DRAWING NO<br>③=36810                                    |
|   |  |  |  | APPLICATION SPEC<br>-       | SCALE 4:1  |
|   |  |  |  | WEIGHT<br>-                 | SHEET 1 OF 1   |