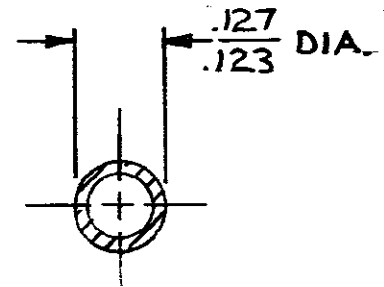
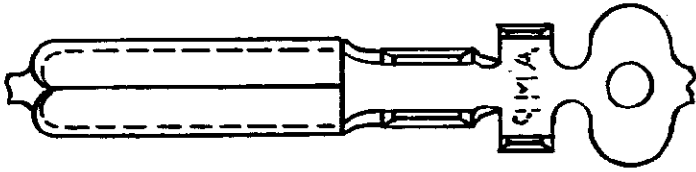


DRAWING MADE IN AMERICAN PROJECTION

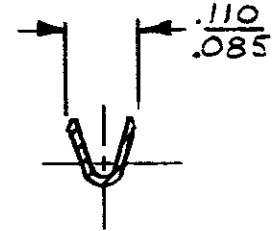
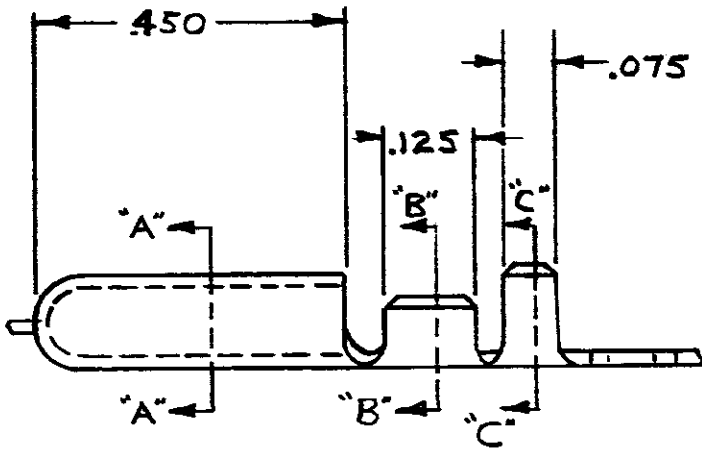
NUMBER 62074

0

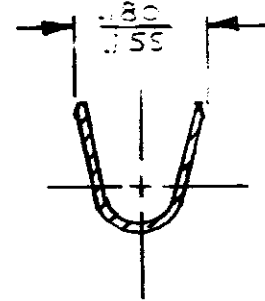
WAS P72-7244



SECTION "A-A"



SECTION "B-B"



SECTION "C-C"

CONTINUOUS STRIP OF WIRE

PART NUMBER

62074-1

Unpublished drawings are hereby acknowledged without written permission of AMP Incorporated.

©1972 BY AMP INCORPORATED. ALL RIGHTS RESERVED. AMP PRODUCTS COVERED BY PATENTS AND/OR PATENTS PENDING

CUSTOMER COPY REFERENCE ONLY

MATERIAL AND FINISH  
.016 BRASS  
NONE



AMP INCORPORATED  
HARRISBURG, PENNA.

CLASS ————

WIRE RANGE INSULATION  
24-20 1060-.03

TYPE ————

TOLERANCE EXCEPT AS NOTED  
± .015 ± 1°

SCALE  
4-1

LOC  
AF

NO

62074

REV  
A

NAME  
.125 DIA. PIN

APPROVED L. K. ESPENSHADE 6-26-72	DESIGNED B. OLSSON	DATE 6-26-72
CHECKED R. S. SMITH	APP B. OLSSON	DATE 6-26-72

DIMENSIONS IN INCHES. DO NOT SCALE PRINT.

50