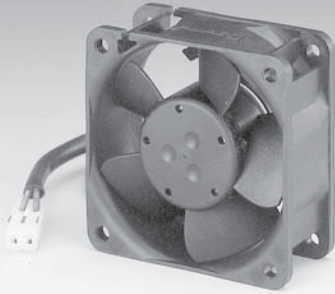


600N Series

Tubeaxial

60x60x25mm



- DC fans with electronically commutated external rotor motor. Fully integrated commutation electronics.
- With electronic protection against reverse polarity, blocking and overloading.
- Mounting from either face using four 4.3 mm holes.
- Fan of fiberglass reinforced plastic. PBTP housing, PA impeller.
- Air exhaust over struts. Rotational direction CCW looking at rotor.
- Electrical connection via 2 leads AWG 22, TR 64. Stripped and tinned ends.
- UL, CSA, VDE approvals on some models, please contact application engineering.

| Part Number | Curve | CFM @ 0 | VDC | Volt. Range | Power (W) | dBA | Max Amb. Temp C | Bearing Type | Features | Wgt. (lbs) |
|-------------|-------|---------|-----|-------------|-----------|-----|-----------------|--------------|----------|------------|
| 612NL | 1 | 12 | 12 | 8 to 15 | 0.6 | 16 | 70 | Ball | Leads | 0.19 |
| 612NML | 2 | 14 | 12 | 8 to 15 | 0.8 | 19 | 70 | Ball | Leads | 0.19 |
| 612NM | 3 | 20 | 12 | 8 to 15 | 1.1 | 28 | 70 | Ball | Leads | 0.19 |
| 612NN | 4 | 24 | 12 | 8 to 15 | 1.6 | 35 | 70 | Ball | Leads | 0.19 |
| 612NH | 5 | 27 | 12 | 8 to 15 | 2.0 | 38 | 70 | Ball | Leads | 0.19 |
| 612NHH | 5 | 27 | 12 | 8 to 15 | 3.0 | 41 | 70 | Ball | Leads | 0.19 |
| 614NL | 1 | 12 | 24 | 18 to 28 | 0.9 | 16 | 70 | Ball | Leads | 0.19 |
| 614NML | 2 | 14 | 24 | 18 to 28 | 1.0 | 19 | 70 | Ball | Leads | 0.19 |
| 614NM | 3 | 21 | 24 | 18 to 28 | 1.4 | 28 | 70 | Ball | Leads | 0.19 |
| 614NN | 4 | 24 | 24 | 18 to 28 | 1.8 | 35 | 70 | Ball | Leads | 0.19 |
| 614NH | 5 | 27 | 24 | 18 to 26 | 2.1 | 38 | 70 | Ball | Leads | 0.19 |
| 614NHH | 6 | 33 | 24 | 18 to 26 | 3.0 | 43 | 70 | Ball | Leads | 0.19 |
| 618NN | 4 | 24 | 48 | 36 to 56 | 2.1 | 35 | 65 | Ball | Leads | 0.19 |

