

DESCRIPTION: 9 POSITION SLIDE LOCK

SCREW

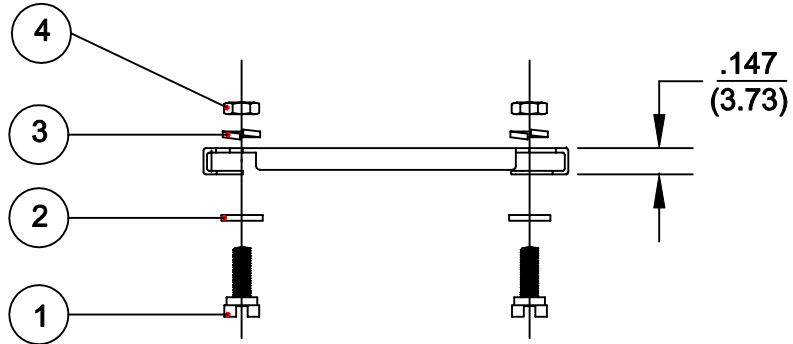
ITEM NO.
1

FLAT & SPLIT WASHERS

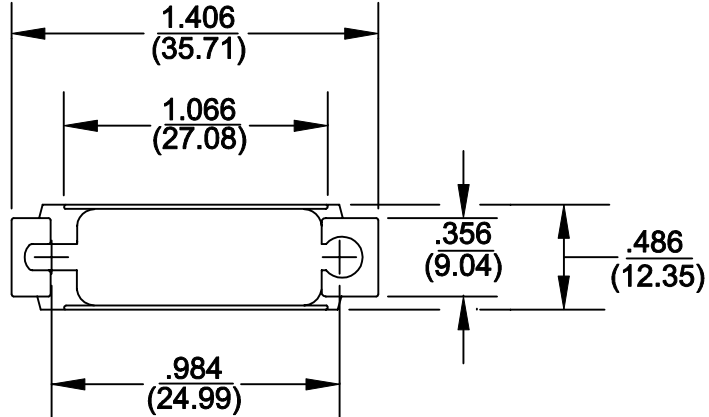
ITEM NO.	ID	OD	WIDTH
2	.120	.220	.031
3	.120	.200	.031

HEX NUT


ITEM NO.	ID	OD	WIDTH
4	4-40	.187	.062



- KIT INCLUDES:**
- (1) SLIDE LOCK BAR
  - (2) 4-40 POSTS
  - (2) FLAT WASHERS
  - (2) LOCK WASHERS
  - (2) 4-40 NUTS



**MATERIALS:**  
 SLIDE LOCK: STAINLESS STEEL  
 WASHER, LOCK WASHER, NUT: STEEL  
 YELLOW CHROMATE PLATING

	THESE DRAWINGS AND SPECIFICATIONS ARE THE PROPERTY OF NorComp AND SHALL NOT BE REPRODUCED, COPIED OR USED AS THE BASIS FOR THE MANUFACTURE OF SALE OF APPARATUS WITHOUT WRITTEN PERMISSION.		DRAWN: <b>WAYNE ROBBINS</b>	DATE: <b>9-16-98</b>	
	<h1>NorComp</h1>			CHECKED:	DATE:
SCALE: 1:1				SHEET 1 OF 1	REV 1
DWG NO. <b>160-009-002-031</b>					