



iMcV-DS3/E3/STS Repeater

Operation Manual



FCC Radio Frequency Interference Statement

This equipment has been tested and found to comply with the limits for a Class B computing device, pursuant to Part 15 of the FCC Rules. These limits are designed to provide reasonable protection against harmful interference when the equipment is operated in a commercial environment. This equipment generates, uses and can radiate radio frequency energy and, if not installed and used in accordance with the instruction manual, may cause harmful interference to radio communications. Operation of this equipment in a residential area is likely to cause harmful interference in which the user will be required to correct the interference at his own expense.

Any changes or modifications not expressly approved by the manufacturer could void the user's authority to operate the equipment.

The use of non-shielded I/O cables may not guarantee compliance with FCC RFI limits. This digital apparatus does not exceed the Class B limits for radio noise emission from digital apparatus set out in the Radio Interference Regulation of the Canadian Department of Communications.

Le présent appareil numérique n'émet pas de bruits radioélectriques dépassant les limites applicables aux appareils numériques de classe B prescrites dans le Règlement sur le brouillage radioélectrique publié par le ministère des Communications du Canada.

Warranty

IMC Networks warrants to the original end-user purchaser that this product, EXCLUSIVE OF SOFTWARE, shall be free from defects in materials and workmanship under normal and proper use in accordance with IMC Networks' instructions and directions for a period of six (6) years after the original date of purchase. This warranty is subject to the limitations set forth below.

At its option, IMC Networks will repair or replace at no charge the product which proves to be defective within such warranty period. This limited warranty shall not apply if the IMC Networks product has been damaged by unreasonable use, accident, negligence, service or modification by anyone other than an authorized IMC Networks Service Technician or by any other causes unrelated to defective materials or workmanship. Any replaced or repaired products or parts carry a ninety (90) day warranty or the remainder of the initial warranty period, whichever is longer.

To receive in-warranty service, the defective product must be received at IMC Networks no later than the end of the warranty period. The product must be accompanied by proof of purchase, satisfactory to IMC Networks, denoting product serial number and purchase date, a written description of the defect and a Return Merchandise Authorization (RMA) number issued by IMC Networks. No products will be accepted by IMC Networks which do not have an RMA number. For an RMA number, contact IMC Networks at PHONE: (800) 624-1070 (in the U.S. and Canada) or (949) 465-3000 or FAX: (949) 465-3020. The end-user shall return the defective product to IMC Networks, freight, customs and handling charges prepaid. End-user agrees to accept all liability for loss of or damages to the returned product during shipment. IMC Networks shall repair or replace the returned product, at its option, and return the repaired or new product to the end-user, freight prepaid, via method to be determined by IMC Networks. IMC Networks shall not be liable for any costs of procurement of substitute goods, loss of profits, or any incidental, consequential, and/or special damages of any kind resulting from a breach of any applicable express or implied warranty, breach of any obligation arising from breach of warranty, or otherwise with respect to the manufacture and sale of any IMC Networks product, whether or not IMC Networks has been advised of the possibility of such loss or damage.

EXCEPT FOR THE EXPRESS WARRANTY SET FORTH ABOVE, IMC NETWORKS MAKES NO OTHER WARRANTIES, WHETHER EXPRESS OR IMPLIED, WITH RESPECT TO THIS IMC NETWORKS PRODUCT, INCLUDING WITHOUT LIMITATION ANY SOFTWARE ASSOCIATED OR INCLUDED. IMC NETWORKS SHALL DISREGARD AND NOT BE BOUND BY ANY REPRESENTATIONS OR WARRANTIES MADE BY ANY OTHER PERSON, INCLUDING EMPLOYEES, DISTRIBUTORS, RESELLERS OR DEALERS OF IMC NETWORKS, WHICH ARE INCONSISTENT WITH THE WARRANTY SET FORTH ABOVE. ALL IMPLIED WARRANTIES INCLUDING THOSE OF MERCHANTABILITY AND FITNESS FOR A PARTICULAR PURPOSE ARE HEREBY LIMITED TO THE DURATION OF THE EXPRESS WARRANTY STATED ABOVE.

Every reasonable effort has been made to ensure that IMC Networks product manuals and promotional materials accurately describe IMC Networks product specifications and capabilities at the time of publication. However, because of ongoing improvements and updating of IMC Networks products, IMC Networks cannot guarantee the accuracy of printed materials after the date of publication and disclaims liability for changes, errors or omissions.

Table of Contents

FCC Radio Frequency Interference Statement	ii
Warranty.....	ii
About the iMcV-DS3/E3/STS	1
Configuration	1
DIP Switches.....	3
Installation	4
LEDs	5
Feature Descriptions	5
Loopback Testing.....	8
Pseudorandom Bit Sequence (PRBS) Testing.....	9
Installation Troubleshooting.....	10
Specifications	10
IMC Networks Technical Support.....	11
Electrostatic Discharge Precautions.....	11
Safety Certifications.....	12

About the iMcV-DS3/E3/STS

iMcV-DS3/E3/STS is an SNMP-manageable module which converts thin coax signals to single-mode or multi-mode fiber signals at a data rate of 45 Mbps (DS3), 34 Mbps (E3) or 52 Mbps (STS). Each iMcV-DS3/E3/STS, BNC/FX module includes one pair of BNC connectors and one pair of ST or SC fiber optic connectors. This module must be installed in either, an SNMP-manageable iMediaChassis chassis or an unmanaged MediaChassis chassis.

Also available for single-strand fiber, iMcV-DS3/E3/STS, BNC/SSFX includes one pair of BNC connectors and an SC fiber optic connector. iMcV-DS3/E3/STS, BNC/SSFX modules allow two wavelengths, for example, (1310 nm and 1550 nm) to share one fiber strand, essentially doubling the capacity of installed fiber.

iMcV-DS3/E3/STS modules must be deployed in pairs (one at each end of a conversion). The data transmitted on the fiber ports can only be received and interpreted by the receive fiber of another iMcV-DS3/E3/STS. The single strand versions must have opposite transmit and receive wavelengths (for example one that transmits at 1310 nm must be paired with another that receives at 1550 nm).

Configuration

Proper configuration of the iMcV-DS3/E3/STS is required for maximum performance and reliability. The following sections describe the prerequisites and the configurations available for both managed and unmanaged modules.

Prerequisites

The iMcV-DS3/E3/STS is designed to conform to many DS3/E3/STS-based environments. Make sure that all of the relevant information about the expected installation environment is available before configuring the module. This information includes the following:

- Distance of the coax run
- Distance of the fiber run
- Troubleshooting requirements.

Managed Modules

To manage iMcV-DS3/E3/STS modules, an SNMP agent must be present; the iMediaChassis requires an SNMP management module. For a managed environment, first manually configure all of the desired DIP Switch selectable features to match what will be configured through the SNMP Management Module.

Use the Graphical User Interface (GUI) to enable features by using the iView² SNMP management software. In a managed chassis, the software settings take priority over the SNMP enabled feature DIP Switch settings. Make sure that the software settings match the desired configuration requirements for the installation.

iView² Management Software

iView² is the IMC Networks management software designed specifically for the IMC Networks “iMcV” family of modules. It features a GUI and gives network managers the ability to monitor and control the manageable IMC Networks products.

iView² is available in several versions and can also function as a snap-in module for HP OpenView Network Node Manager and other third party SNMP Management software. For assistance in selecting the right version of iView² for your operating system, please visit:

<http://www.imcnetworks.com/products/iview2.cfm>

iView² supports the following platforms:

- Windows NT
- Windows 2000
- Windows XP

In addition, there are Java versions of iView² for any Java-capable operating systems such as Linux.

Please see the *SNMP* Management Module for software configuration options.

NOTE
IMC Networks' iView ² software is available for downloading from the web site: www.imcnetworks.com .

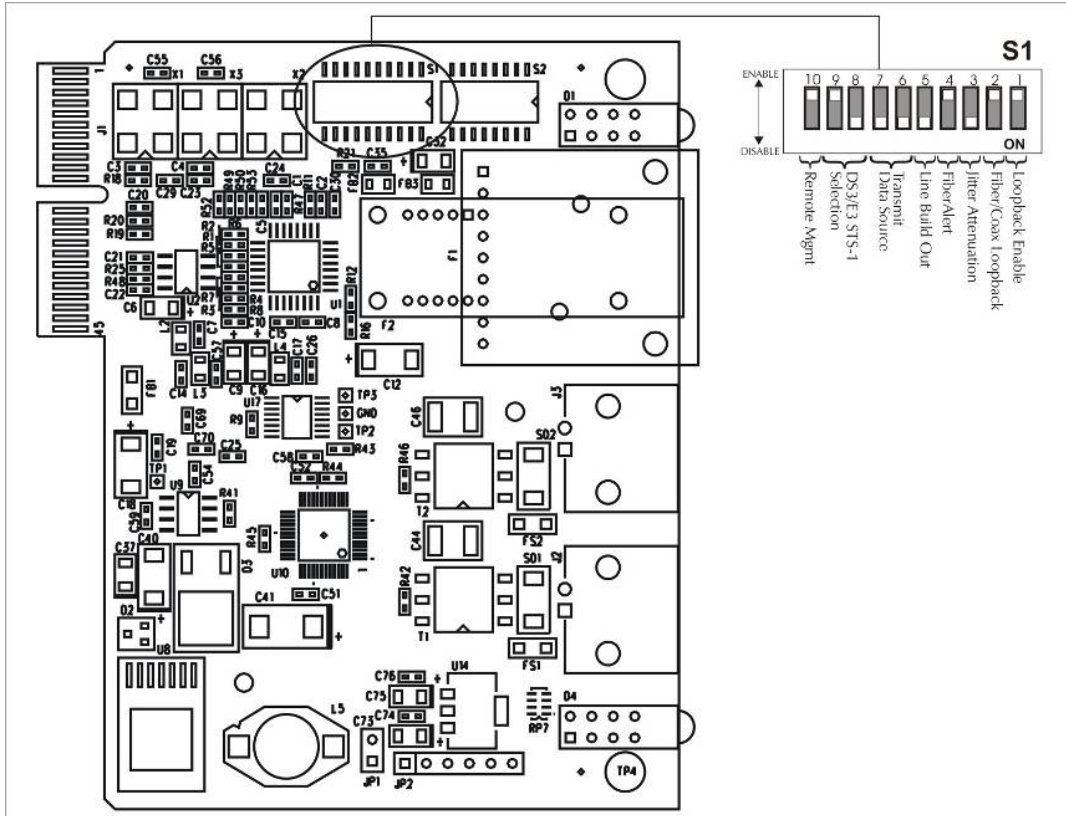
Unmanaged Modules

Before installing the module in an unmanaged chassis, including IE-MediaChassis series and MediaChassis series, manually configure all of the desired DIP Switch selectable features. In an unmanaged configuration, none of the DIP Switch settings can be overridden by software.

DIP Switches

The iMcV-DS3/E3/STS DIP Switches are located on S1 and S2 on the PCB. The S2 DIP Switches are factory configured and must not be moved. The S1 DIP Switches provide control over the available iMcV-DS3/E3/STS features.

The location of the S1 DIP Switches is displayed in the following diagram:



DIP Switch Settings

FUNCTION	SWITCH SETTINGS	RESULT [(D) = Default]
Loopback (iView² Configurable)		
	S1-1: OFF	Loopback Disabled (D)
	S1-1: ON	Loopback Enabled
Loopback Type (iView² Configurable)		
	S1-2: OFF	Coax (D)
	S1-2: ON	Fiber
Jitter Attenuation (iView² Configurable)		
	S1-3: OFF	Jitter Attenuator on Receive Side
	S1-3: ON	Jitter Attenuator on Transmit Side (D)
FiberAlert (iView² Configurable)		
	S1-4: OFF	FiberAlert Disabled (D)
	S1-4: ON	FiberAlert Enabled
Line Build-Out (iView² Configurable)		
	S1-5: OFF	0 to 255 ft.
	S1-5: ON	> 255 ft. (D)
Transmit Data Source (iView² Configurable)		
	S1-6: ON 7: ON	Standard Data (D)
	S1-6: OFF 7: ON	Unframed All Ones
	S1-6: ON 7: OFF	Alternating Ones & Zeros
	S1-6: OFF 7: OFF	Pseudorandom Bit Sequence
DS3/E3/STS Selection		
	S1-8: ON 9: OFF	45 Mbps (DS3)
	S1-8: OFF 9: ON	34 Mbps (E3)
	S1-8: ON 9: ON	52 Mbps (STS)
Remote Management		
	S1-10: OFF	Remote Management Disabled (D)
	S1-10: ON	Remote Management Enabled

Installation

iMcV-DS3/E3/STS modules can be installed in any iMediaChassis, MediaChassis or IE-MediaChassis series (remote modules can also be installed in any unmanaged MediaChassis series). Each module requires one slot in the chassis. To install a module, remove the blank brackets covering the slots where the module is to be installed (if present) by removing the screws on the outside edges of the bracket. Slide the module into the chassis card guides, until the module is securely seated in the connector. Secure the module to the chassis by tightening the captive screw. Save any blanks removed during installation for future use.

NOTE

It is not recommended that the iMcV-DS3/E3/STS module be installed in an 850-33100. The power source in this chassis is not isolated, and cannot support positive reference ground systems typically used in Telco environments.

LEDs

The iMcV-DS3/E3/STS module features several diagnostic LEDs per port. The LED functions are as follows:

	<p><u>LEDs Next to Coax (BNC) Port</u></p>	
LPBK	Glows green when module is in a Loopback mode.	
NO LNK	Glows green when a link is NOT established.	
PBEO	When Transmit Data Source is set to Pseudo-random Bit Sequence, this LED will glow yellow when iMcV-DS3/E3/STS receives a Pseudorandom Bit Sequence with errors. The LED stays off when the converter receives a Pseudorandom Bit Sequence without errors. When Transmit Data Source is set to any other configuration besides Pseudorandom Bit Sequence, this LED remains off as well.	
	<p><u>LEDs Next to Fiber Optic Port</u></p>	
FA	Glows green when FiberAlert is enabled.	
NO LNK	Glows green when a link is NOT established.	
RM	Glows green on the remote unit when Remote Management is enabled. Glows green on the local unit when it has discovered a manageable remote unit.	
SYM	Glows yellow when a FX symbol error has occurred.	

Feature Descriptions

The iMcV-DS3/E3/STS module includes several features that allow it to be configured for varying DS3/E3/STS-based environments.

Loopback

This switch enables or disables the loopback feature. When this feature is enabled, the data line (Coax or Fiber) set by the Loopback Type DIP Switch is looped back.

By default this feature is set to **DISABLED**.

This feature can be controlled by SNMP management software (iView²) when the iMcV-DS3/E3/STS module is installed in a managed chassis.

Loopback Type

This switch controls which data line is looped back when the Loopback DIP Switch is enabled. The data line loopback selection can be either Fiber Loopback or Coax Loopback.

By default this feature is set to **COAX**.

This feature can be controlled by SNMP management software (iView²) when the iMcV-DS3/E3/STS module is installed in a managed chassis.

Jitter Attenuation

This switch selects the jitter attenuation location on the coax transceiver. The jitter attenuation can be set on the transmit side or on the receive side of the coax transceiver.

Jitter attenuation is useful for decreasing jitter in the coax data stream. This helps prevent data degradation caused by jitter. Jitter attenuation is always enabled.

By default this feature is set to **TRANSMIT**.

This feature can be controlled by SNMP management software (iView²) when the iMcV-DS3/E3/STS module is installed in a managed chassis.

FiberAlert

This switch enables or disables the FiberAlert feature. This feature must only be enabled on the remote end of a Host/Remote iMcV-DS3/E3/STS pair.

The FiberAlert feature uses the iMcV-DS3/E3/STS module LEDs to indicate that a loss of one strand of fiber has occurred. When a strand becomes unavailable, the iMcV-DS3/E3/STS module at the receiver-end detects the loss of the link. The module then responds by stopping the transmission of the data and link signal until a new signal or link pulse is received on the strand. The result is that the *NO LNK* LED on both sides of the fiber connection will light up to indicate the presence of a fault somewhere in the fiber loop. By using FiberAlert, a local site administrator can quickly determine where a fiber cable fault is located.

By default this feature is set to **DISABLED**.

This feature can be controlled by SNMP management software (iView²) when the iMcV-DS3/E3/STS module is installed in a managed chassis.

**** WARNING ****

Enabling FiberAlert on both of the iMcV-DS3/E3/STS modules will cause them both to stop transmitting unrecoverably when a fault occurs. This feature is designed to only be enabled on the Remote iMcV-DS3/E3/STS module.

Transmit LIU Waveshape (Line Build-Out)

This switch selects the optimal transmit waveshape for the line build-out distance on the coax line. The transmit waveshape can be set for a distance of either 0 to 255 feet or over 255 feet. This feature corrects problems related to cabling (i.e. cross-talk, electromagnetic interference, etc.). Improperly setting this switch will cause signal degradation.

By default this feature is set to **> 255 FEET**.

This feature can be controlled by SNMP management software (iView²) when the iMcV-DS3/E3/STS module is installed in a managed chassis.

Transmit Data Source

These switches select the transmit mode used by the iMcV-DS3/E3/STS module. The transmit modes that can be selected include the following:

- Standard data
- Unframed All Ones (diagnostic)
- Alternating Ones and Zeros (diagnostic)
- Pseudorandom bit sequence (diagnostic)

These standard Telco transmission pattern modes are provided to help diagnose transmission errors in the line.

By default this feature is set to **STANDARD DATA**.

This feature can be controlled by SNMP management software (iView²) when the iMcV-DS3/E3/STS module is installed in a managed chassis.

DS3, E3 and STS Selection

This switch selects the data rate to use on the coax line. The data rate selections available include the following:

- 45 Mbps (DS3)
- 34 Mbps (E3)
- 52 Mbps (STS)

By default this feature is set to **45 Mbps (DS3)**.

This feature can only be selected by setting the DIP Switches manually.

Remote Management

This switch enables or disables the Remote Management mode. Enabling Remote Management on the Remote module allows all SNMP-configurable features for both the Host and Remote modules to be configured from the Host module.

NOTE

When the Remote Management feature is enabled on the Remote module, the remote module must either be installed in an unmanaged chassis or in a managed chassis with the SNMP-management disabled (iMediaChassis chassis with the SNMP management module removed).

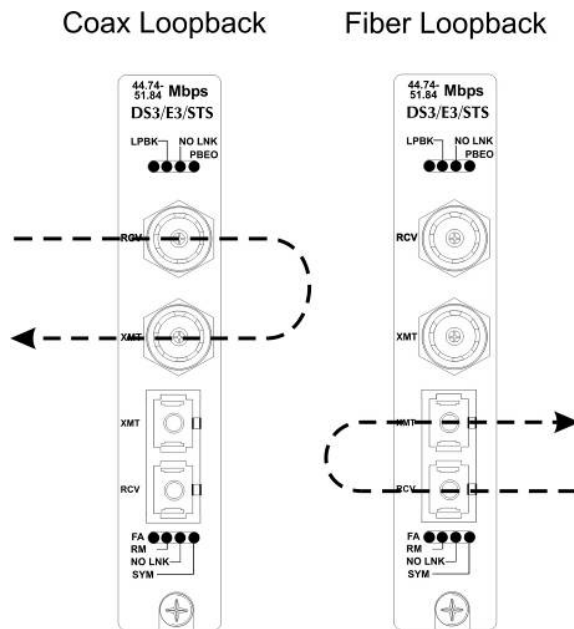
By default this feature is set to **Disabled**.

This feature can only be selected by setting the DIP Switches manually.

Loopback Testing

The iMcV-DS3/E3/STS includes two loopback test modes: Coax Loopback and Fiber Loopback.

The following illustrations show the path that a signal takes in each of the loopback test modes.



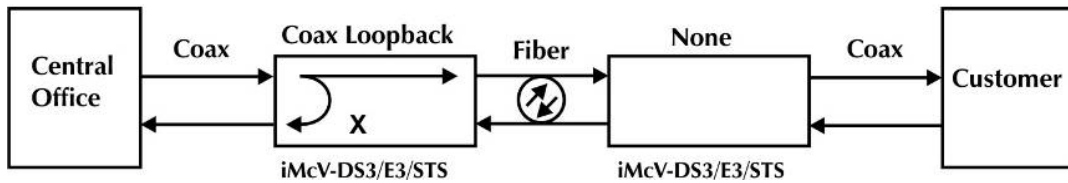
Each loopback performs the following:

- Redirects the incoming signal back out to the origin while continuing to transmit downstream.
- Blocks downstream data from arriving on the looped data line.

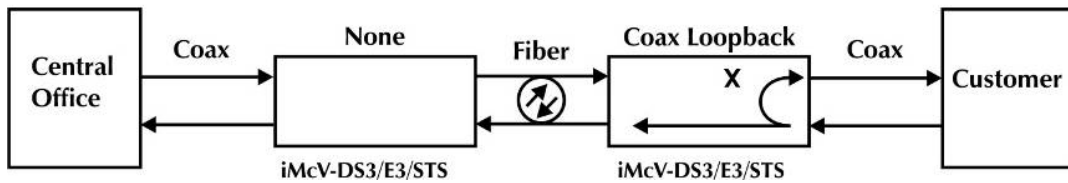
Loopback testing is useful for troubleshooting problems with network connections should they occur. Looping received data back onto the transmit path helps determine whether a connection is still valid. Remote loopback tests isolate problems on the coax run between an iMcV-DS3/E3/STS module and the connected device, while local loopback tests can isolate problems on the fiber connected to the module.

The following illustrations show a typical progression of loopback tests (i.e. starting by checking the coax segment at the local side, then the coax segment at the remote side, etc).

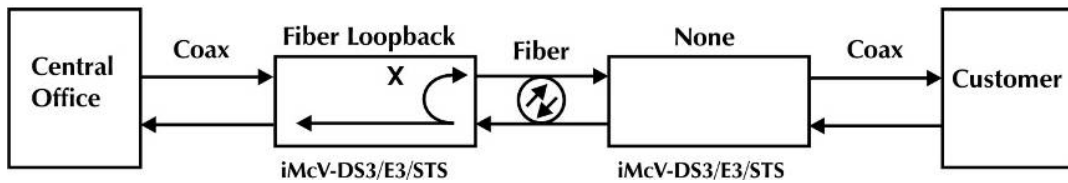
Coax Loopback on Local iMcV-DS3/E3/STS



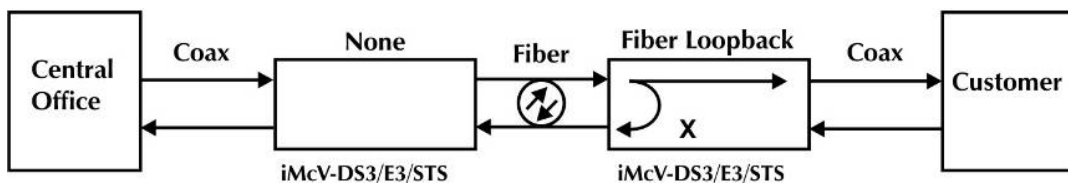
Coax Loopback on Remote iMcV-DS3/E3/STS



Fiber Loopback on Local iMcV-DS3/E3/STS

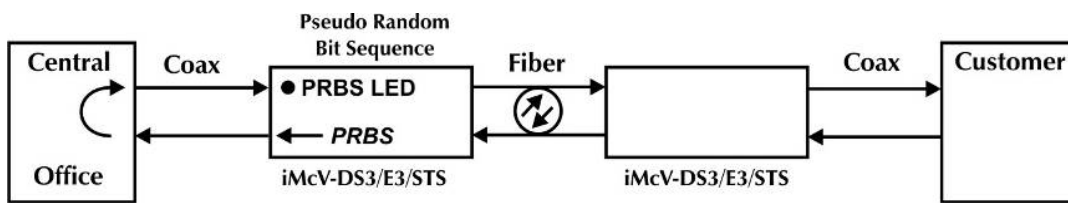


Fiber Loopback on Remote iMcV-DS3/E3/STS



Pseudorandom Bit Sequence (PRBS) Testing

To test using Pseudorandom Bit Sequence, configure the iMcV-DS3/E3/STS modules for No Loopback, then configure the Transmit Data Source to "Transmit Pseudorandom Bit Sequence." Configure the local device for loopback, conduct the test, then check the *PBEO* LED to verify errors were not received (Refer to the LED section for more information).



Installation Troubleshooting

General Troubleshooting

- During installation, first test the fiber and BNC connections with all troubleshooting features disabled; then enable these features, if desired, just before final installation. This will reduce the features' interference with testing.
- When working with units where the features cannot be disabled, you must establish BOTH your BNC and fiber connections; the NO LNK LEDs should not be lit (i.e. NO LNK LED not lit = good connection, NO LNK LED lit = problem).
- To test a media converter by itself, first make sure you have an appropriate fiber patch cable, then follow these steps to test:
 1. Connect the media converter to the BNC device with a coax cable.
 2. Loop a single strand of fiber from the transmit port to the receive port of your media converter.
 3. Verify that you have a valid connection for both the BNC and fiber ports on your media converter.
- If there is trouble with link connectivity, make sure the connection is made using 75W Coax cable.

Specifications

Power Consumption (Typical)

0.550 Amps @ 5 V

Operating Temperature

32° to 122° F (0° to 50° C)

Storage Temperature

0° to 160°F (-20° to 70° C)

Humidity

5 to 95% (non-condensing); 0 to 10,000 ft. altitude

Dimensions

4.19" x .78" x 2.75"

(106.4 mm x 19.81 mm x 69.85 mm)

IMC Networks Technical Support

Tel: (949) 465-3000 or (800) 624-1070 (in the U.S. and Canada);
+32-16-550880 (Europe)

Fax: (949) 465-3020

E-Mail: techsupport@imcnetworks.com

Web: www.imcnetworks.com

Fiber Optic Cleaning Guidelines

Fiber Optic transmitters and receivers are extremely susceptible to contamination by particles of dirt or dust, which can obstruct the optic path and cause performance degradation. Good system performance requires clean optics and connector ferrules.

1. Use fiber patch cords (or connectors, if you terminate your own fiber) only from a reputable supplier; low-quality components can cause many hard-to-diagnose problems in an installation.
2. Dust caps are installed at IMC Networks to ensure factory-clean optical devices. These protective caps should not be removed until the moment of connecting the fiber cable to the device. Should it be necessary to disconnect the fiber device, reinstall the protective dust caps.
3. Store spare caps in a dust-free environment such as a sealed plastic bag or box so that when reinstalled they do not introduce any contamination to the optics.
4. If you suspect that the optics have been contaminated, alternate between blasting with clean, dry, compressed air and flushing with methanol to remove particles of dirt.

Electrostatic Discharge Precautions

Electrostatic discharge (ESD) can cause damage to any product, add-in modules or stand alone units, containing electronic components. Always observe the following precautions when installing or handling these kinds of products

1. Do not remove unit from its protective packaging until ready to install.
2. Wear an ESD wrist grounding strap before handling any module or component. If the wrist strap is not available, maintain grounded contact with the system unit throughout any procedure requiring ESD protection.
3. Hold the units by the edges; do not touch the electronic components or gold connectors.
4. After removal, always place the boards on a grounded, static-free surface, ESD pad or in a proper ESD bag. Do not slide the modules or stand alone units over any surface.



WARNING! Integrated circuits and fiber optic components are extremely susceptible to electrostatic discharge damage. Do not handle these components directly unless you are a qualified service technician and use tools and techniques that conform to accepted industry practices.

Safety Certifications

UL/CUL: Listed to Safety of Information Technology Equipment, including Electrical Business Equipment.

CE: The products described herein comply with the Council Directive on Electromagnetic Compatibility (2004/108/EC) and the Council Directive on Electrical Equipment Designed for use within Certain Voltage Limits (2006/95/EC). Conforms to UL Std. 60950-1; Certified to CSA Std. C22.2 No. 60950-1



**Class 1 Laser product, Luokan 1 Laserlaite,
Laser Klasse 1, Appareil A' Laser de Classe 1**

European Directive 2002/96/EC (WEEE) requires that any equipment that bears this symbol on product or packaging must not be disposed of with unsorted municipal waste. This symbol indicates that the equipment should be disposed of separately from regular household waste. It is the consumer's responsibility to dispose of this and all equipment so marked through designated collection facilities appointed by government or local authorities. Following these steps through proper disposal and recycling will help prevent potential negative consequences to the environment and human health. For more detailed information about proper disposal, please contact local authorities, waste disposal services, or the point of purchase for this equipment.





19772 Pauling • Foothill Ranch, CA 92610-2611 USA
TEL: (949) 465-3000 • FAX: (949) 465-3020
www.imcnetworks.com



© 2009 IMC Networks. All rights reserved.

The information in this document is subject to change without notice. IMC Networks assumes no responsibility for any errors that may appear in this document. iMcV-DS3/E3/STS Repeater is a trademark of IMC Networks. Other brands or product names may be trademarks and are the property of their respective companies.

Document Number 50-80301-00 A4

August 2009