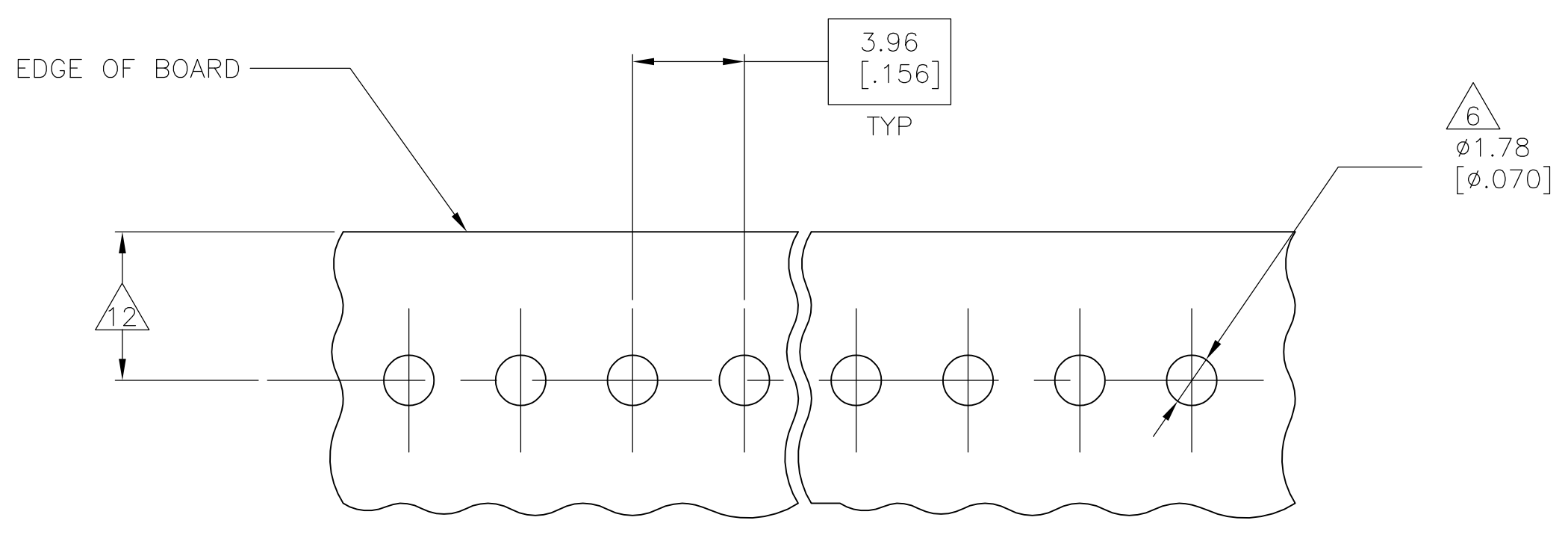
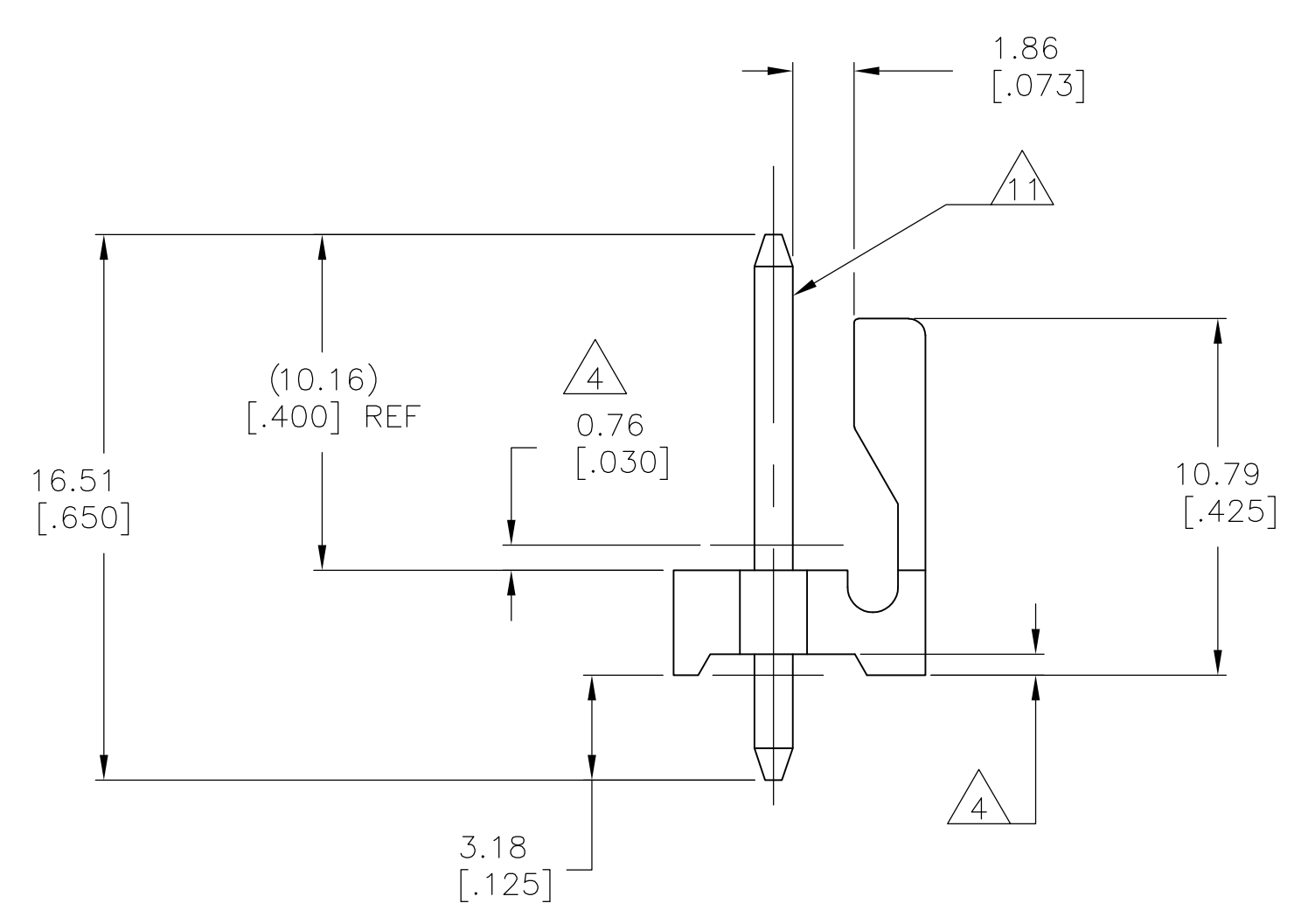
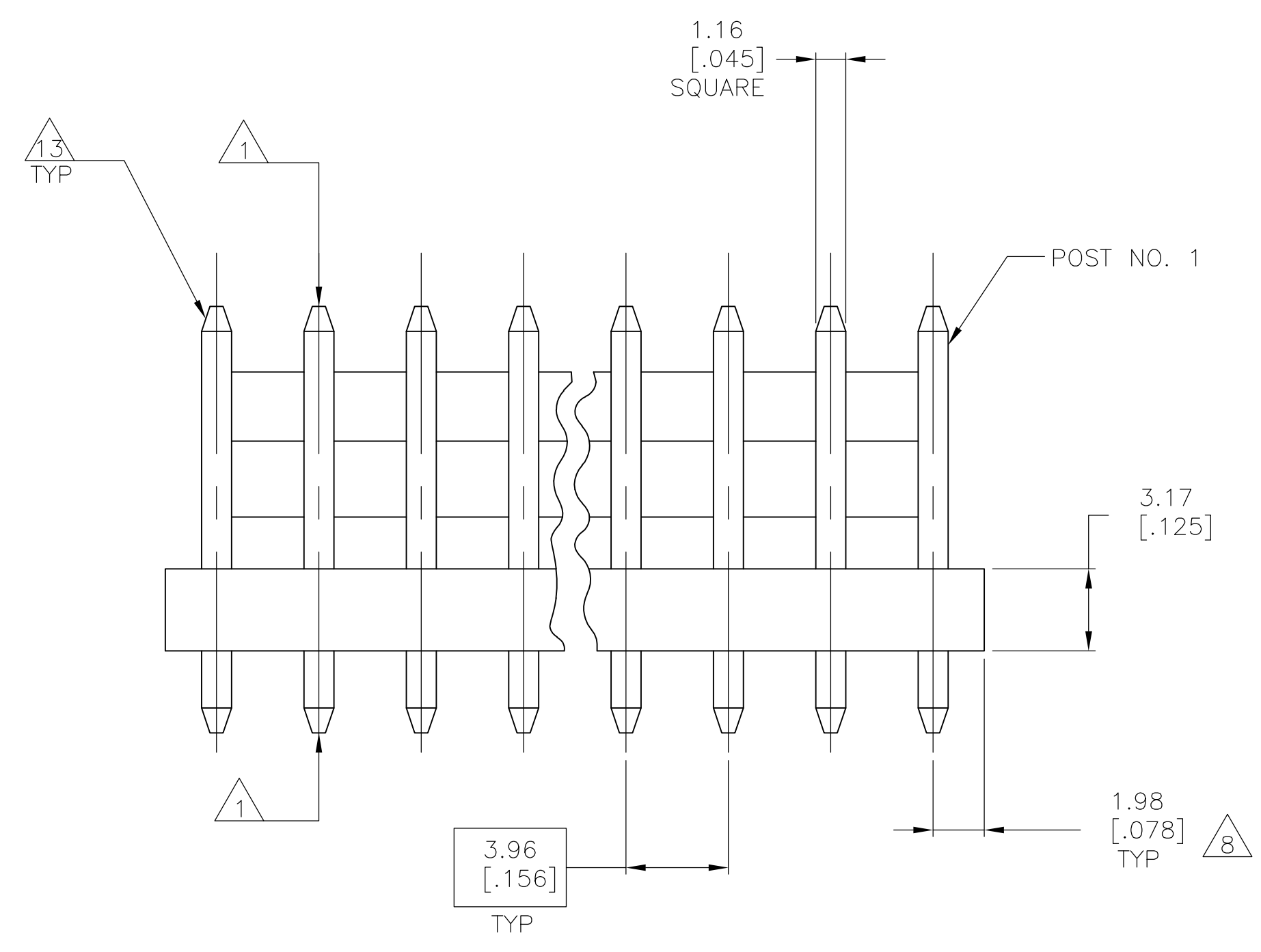
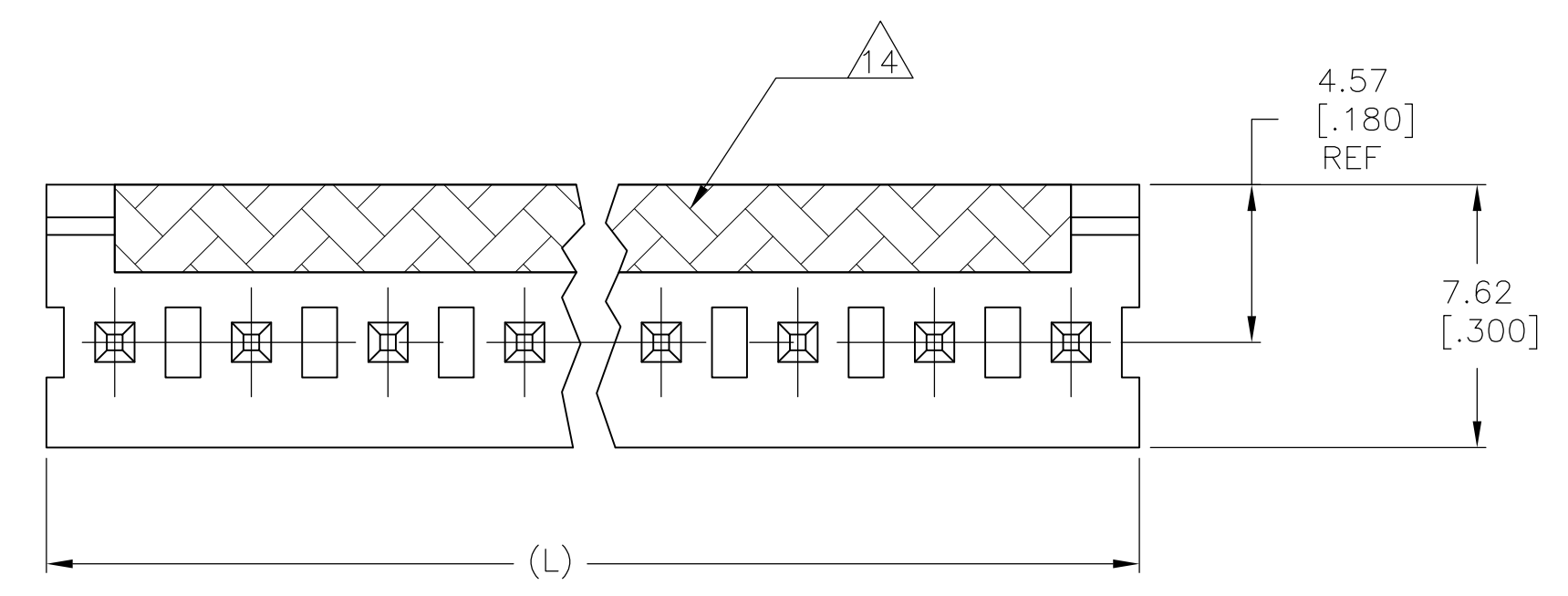


LOC		DIST		REVISIONS			
CM	00	REV	DATE	DESCRIPTION	DATE	BY	APPV
B1		REVISED PER	ECO-08-017228		25AUG11	HMR	MS



RECOMMENDED MOUNTING HOLE PATTERN ²
 FOR 1.60 [.063] THICK P.C. BOARD

- ¹ POST TO WITHSTAND 13 NEWTONS (3LBS.) MIN. AXIAL FORCE IN BOTH DIRECTIONS SHOWN WITHOUT DISLODGING.
- ² TOLERANCES APPLY TO SOLDER SIDE OF BOARD.
- ⁴ PLASTIC FLASH PERMITTED IN THIS AREA.
- ⁵ PARTS COMPLY WITH AMP SOLDERABILITY SPEC. NO. 109-11-2.
- ⁶ ONE HOLE MAY BE UNDERSIZED (.065/.060 DIA.) FOR ASSEMBLY RETENTION DURING WAVE SOLDERING.
- ⁷ MATERIAL: HEADER-THERMOPLASTIC POLYESTER
GLASS-FILLED 94V-0 (NATURAL)
POST-COPPER ALLOY (TIN PLATED)
- ⁸ COORDINATE DIMENSION APPLIES FROM CENTER OF ACTUAL FEATURE.
- ⁹ PLASTIC BURRS CAUSED BY CUT-OFF TOOLING ARE PERMITTED WITHIN THE MAXIMUM TOLERANCE ENVELOPE.
- ¹¹ POST MUST WITHSTAND TWO 90° BENDS AGAINST EXTRUSION WITHOUT BREAKING.
- ¹² DIMENSION SHOULD BE 4.45 [.175] MIN WHEN MATING WITH A MTA-156 CONNECTOR ASSEMBLY OR A SL-156 CONNECTOR ASSEMBLY.
- ¹³ PIN BURR OF 0.127 [.005] MAX. VERTICAL AND 0.076 [.003] MAX. HORIZONTAL PERMITTED AT POST TIPS ON BOTH ENDS.
- ¹⁴ COLOR STRIPE ORANGE IN APPROXIMATE LOCATION SHOWN

7.92	.312	2	647684-2
MM	[IN]	NUMBER OF POSITIONS	PART NUMBER
L			

THIS DRAWING IS A CONTROLLED DOCUMENT.		DIN S. HOOVER 070CT03	TE Connectivity	
DIMENSIONS: mm [INCHES]		CHK: D. ROSSI 070CT03		
TOLERANCES UNLESS OTHERWISE SPECIFIED:		APP'D: D. ROSSI 070CT03	NAME: MTA-.156 HEADER ASSEMBLY, FRICTION LOCK, STRAIGHT .045 SQUARE POST, TIN PLATED, SPECIAL	
0 PLC ±		PRODUCT SPEC	APPLICATION SPEC	
1 PLC ±			SIZE: A1	
2 PLC ± 0.38 [.015]			CAGE CODE: 00779	
3 PLC ± 0.13 [.005]			DRAWING NO: 647684	
4 PLC ±			RESTRICTED TO: -	
ANGLES ±			WEIGHT: -	
MATERIAL: ⁷	FINISH: ⁹	CUSTOMER DRAWING	SCALE: 5:1	SHEET 1 OF 1

