

DETAILS

Product Number	CA11420_TINA2-D
Family	Tina
Type	Assembly
Color	black
Diameter	16,1 mm
Height	9,66 mm
Style	round
Optic Material	PMMA
Holder Material	
Fastening	tape
Status	production ready
ROHS Compliant	Yes
Date Updated	4/10/2016



OPTICAL PROPERTIES

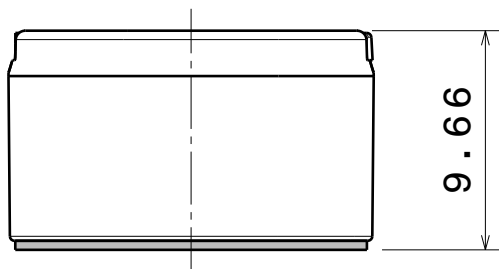
LED	Viewing Angle	Light Beam	Efficiency	cd/lm	Connector
XP-E	12 deg	Diffuser	91 %	10.300	-
XP-G	17 deg	Diffuser	91 %	5.520	-
XT-E	16 deg	Diffuser	-	6.170	-
XP-G2	15 deg	Diffuser	90 %	8.000	-
XP-E2	13 deg	Diffuser	86 %	11.800	-
H35C1 (LEMWA33)	17 deg	Diffuser	86 %	7.200	-

D

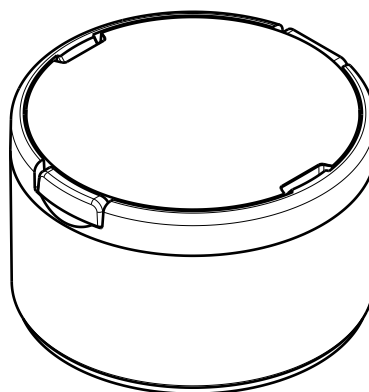
C

B

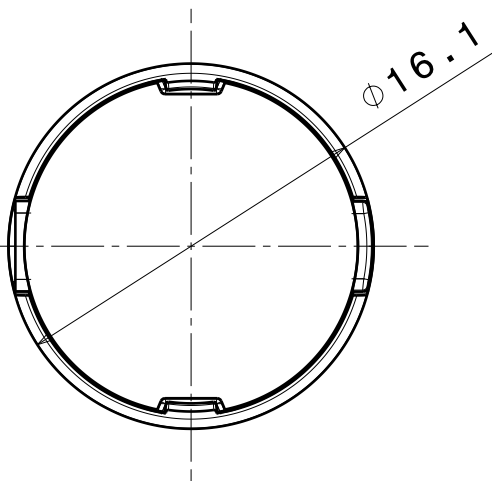
A



Bottom view
Scale: 3:1

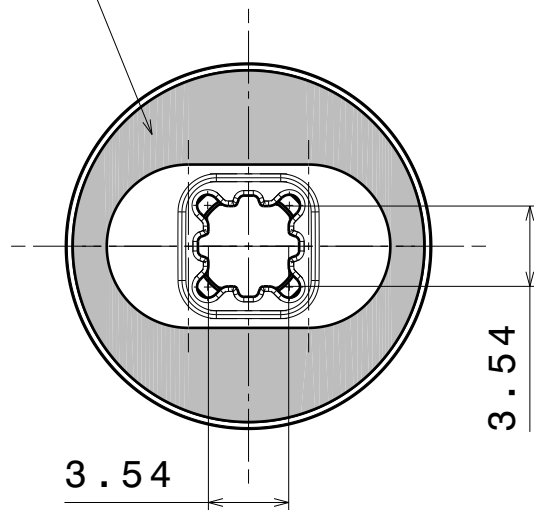


Isometric view
Scale: 3:1



Front view
Scale: 3:1

PU foam tape 0.4mm



Rear view
Scale: 3:1

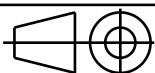
INDEX	PART NO	DESCRIPTION	MATERIAL	COLOUR
1	-	TINA2-lens	PMMA	
2	C11418	TINA2-XP-HLD-TAPE-BLK	PC	black

Tolerances if not otherwise shown
According to DIN ISO 2768-1
Linear measures:
Up to 30mm class M, otherwise class C.
According to DIN ISO 2768-2
Form and position: class L

LEDiL

Ledil Oy
Salorankatu 10
FIN 24240 SALO
Finland

THIRD ANGLE PROJECTION:



DRAWING TITLE

TINA2-XP-series assembly

This drawing is the property
of LEDiL Oy. It may not be
reproduced, copied or
communicated without a written
agreement with LEDiL Oy.

SIZE PART NUMBER

A4

-

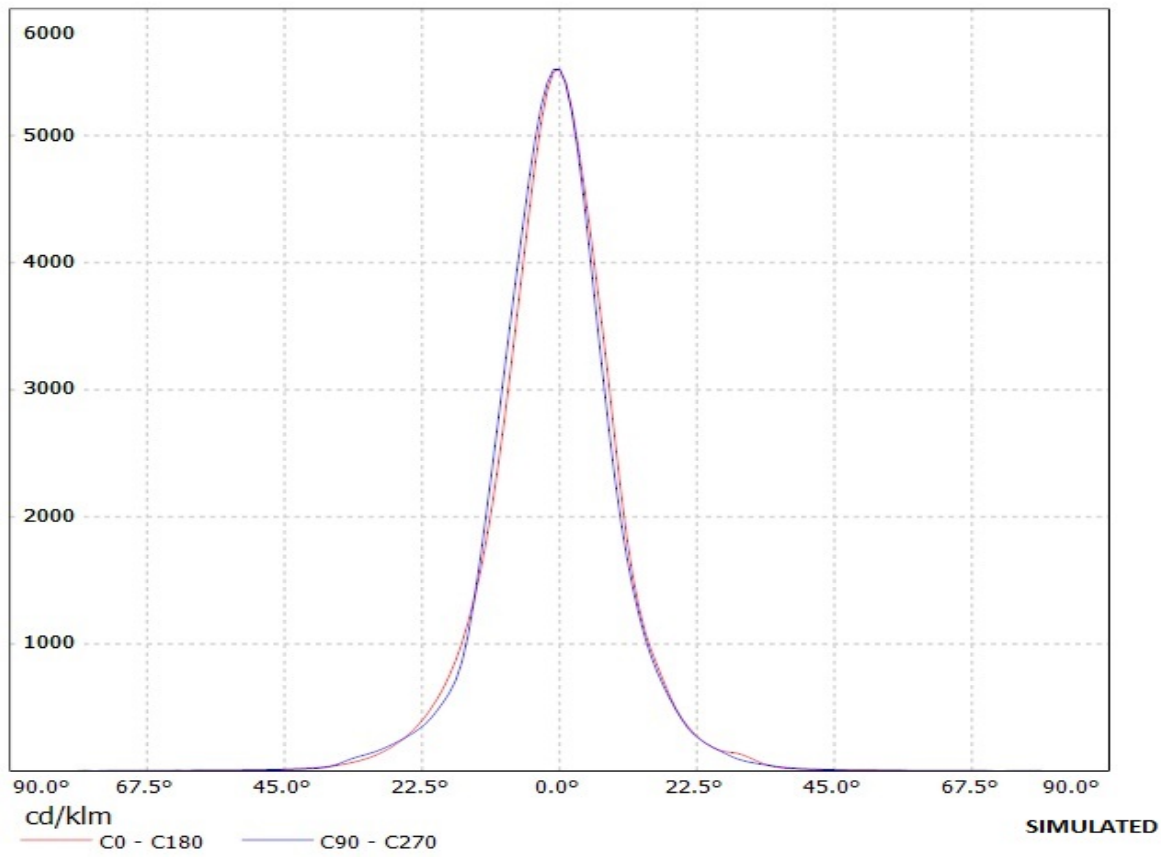
SCALE 3:1 WEIGHT 1,3 g SHEET 1/1

D

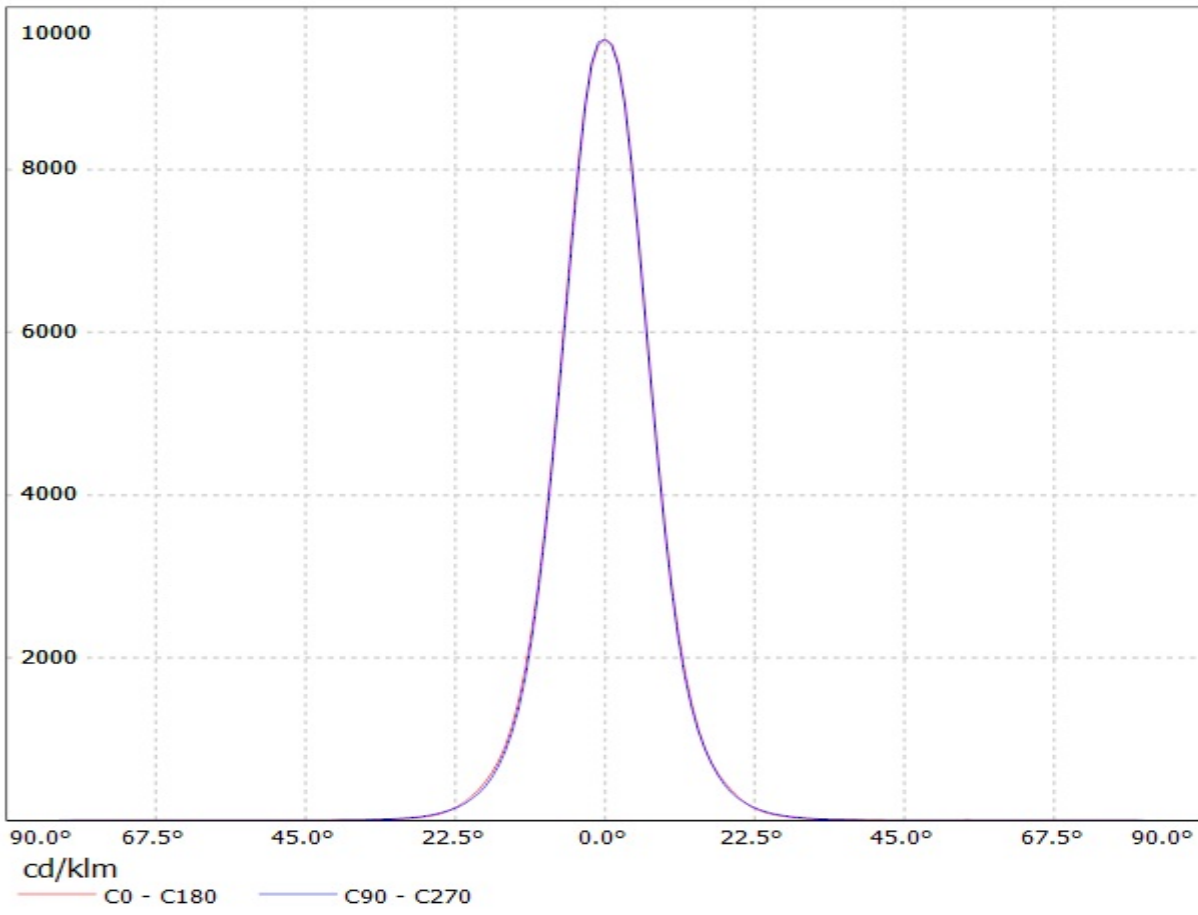
A

Ledil Oy CA11420_Tina2-XP-G-D-black LOR=95% / LDC (Linear)

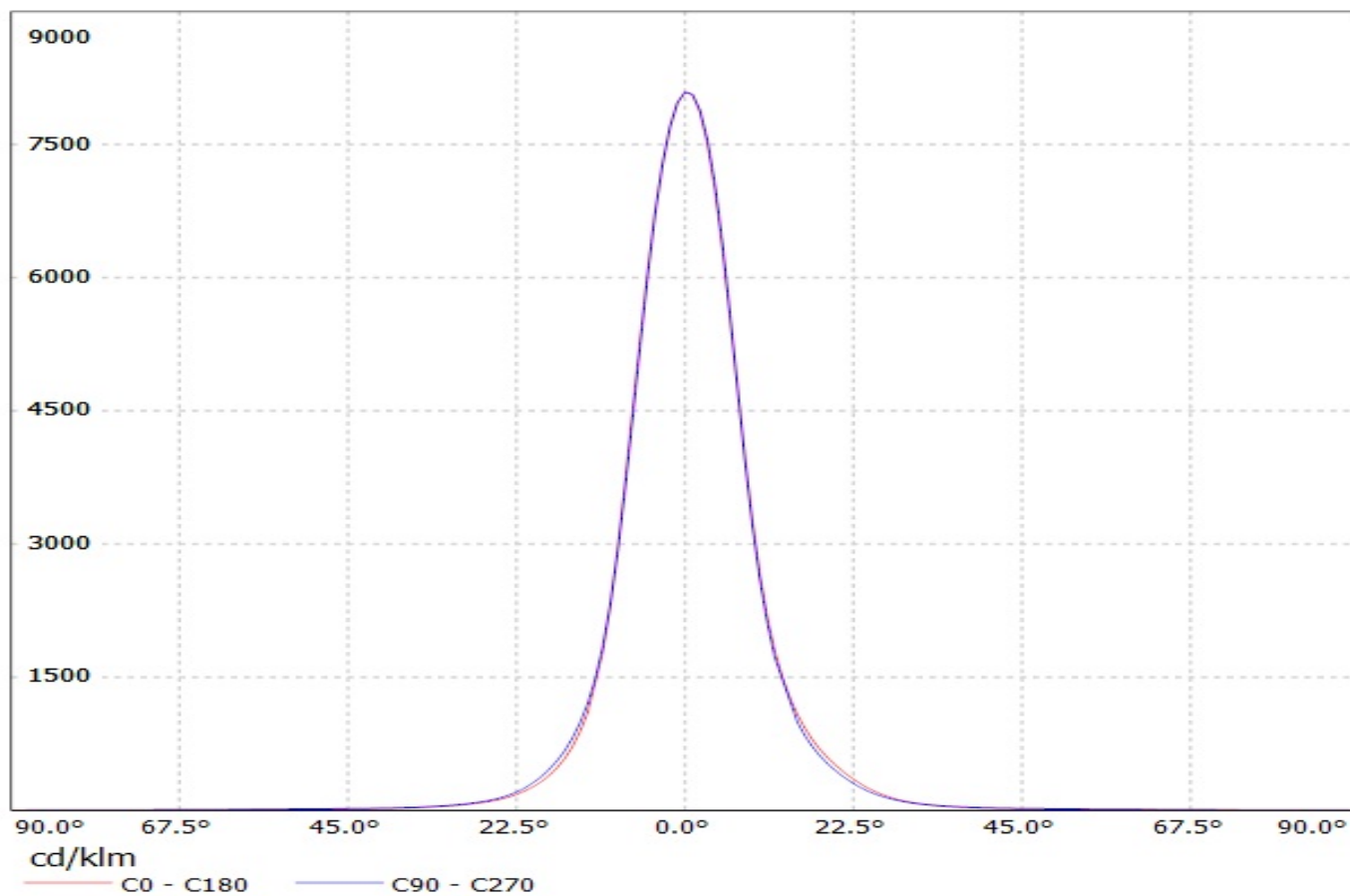
Luminaire: Ledil Oy CA11420_Tina2-XP-G-D-black LOR=95%
Lamps: 1 x Cree XP-G 89lm 250mA



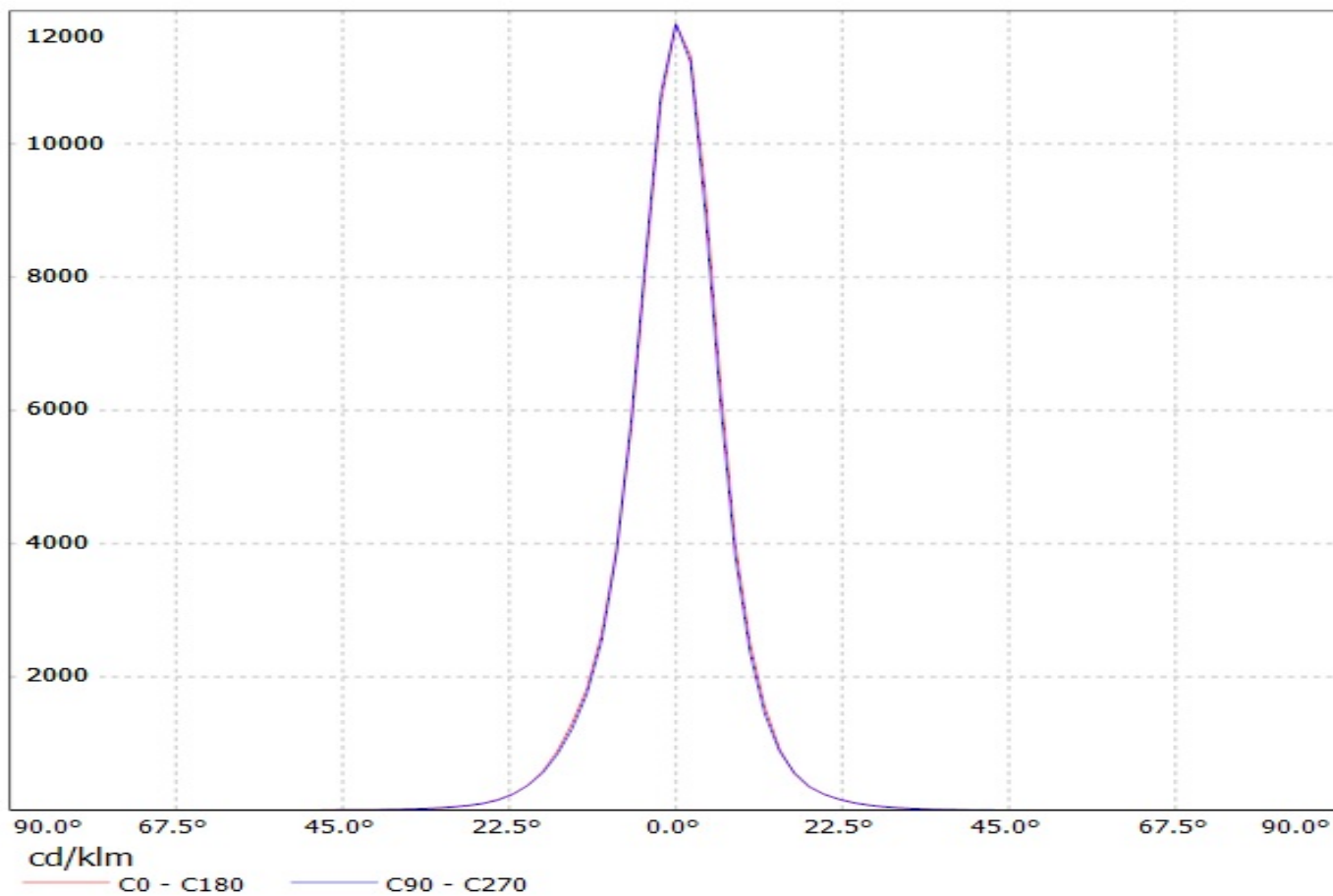
Luminaire: Ledil Oy CA11420_TINA2-D-BLK_XT-E-AWT_SIMULATED CA11420_TINA2-D-BLK_XT-E-AWT_SIMULATED
Lamps: 1 x CREE XT-E-AWT (White) 100lm



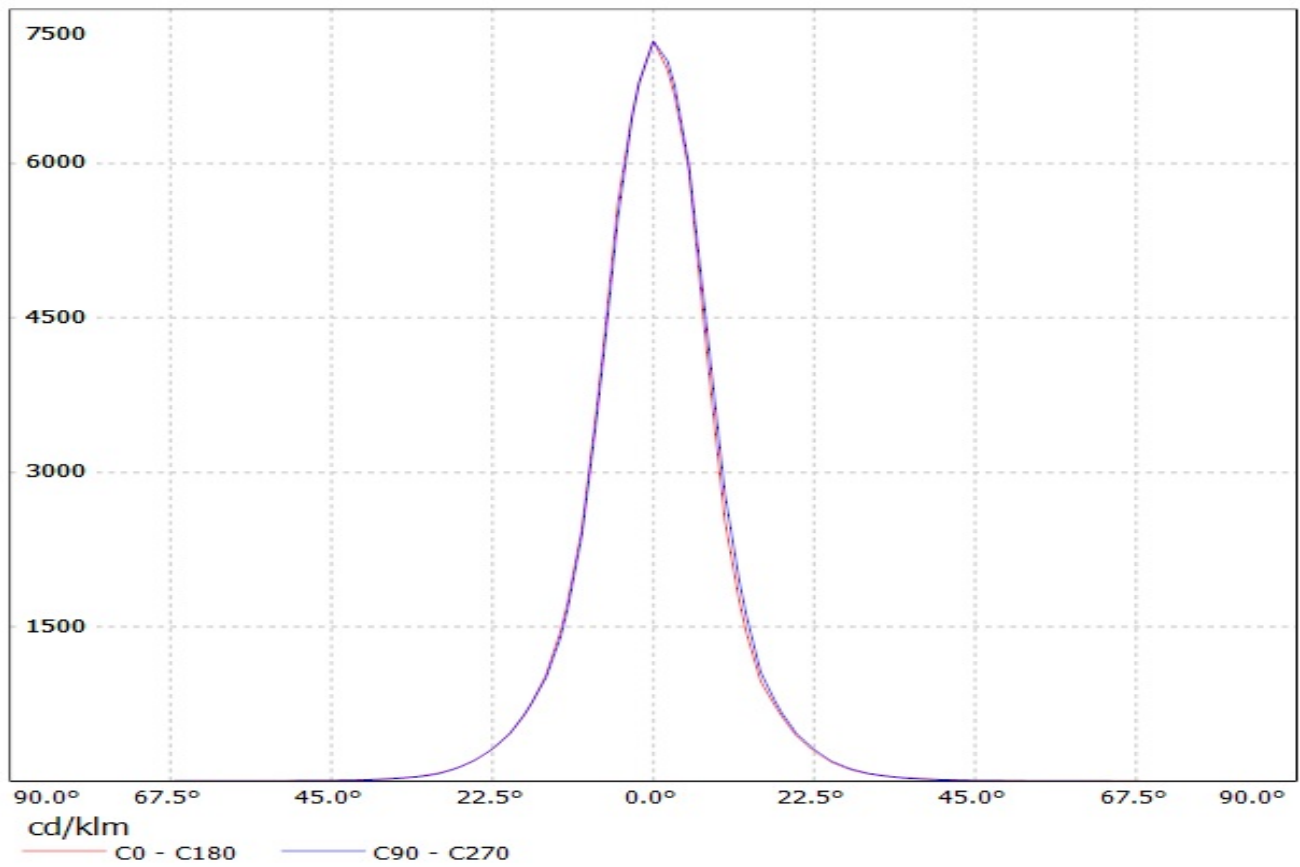
Valaisin: LEDIL OY CA11420_TINA2-D_(XP-G2) Efficiency=90%
Lamput: 1 x Cree XP-G2 (109.1lm @ 250mA)



Luminaire: Ledil Oy CA11420_TINA2-D (CREE XP-E2 (92 lm @ 250 mA)) Efficiency=86%
Lamps: 1 x CREE XP-E2 (92 lm @ 250 mA)



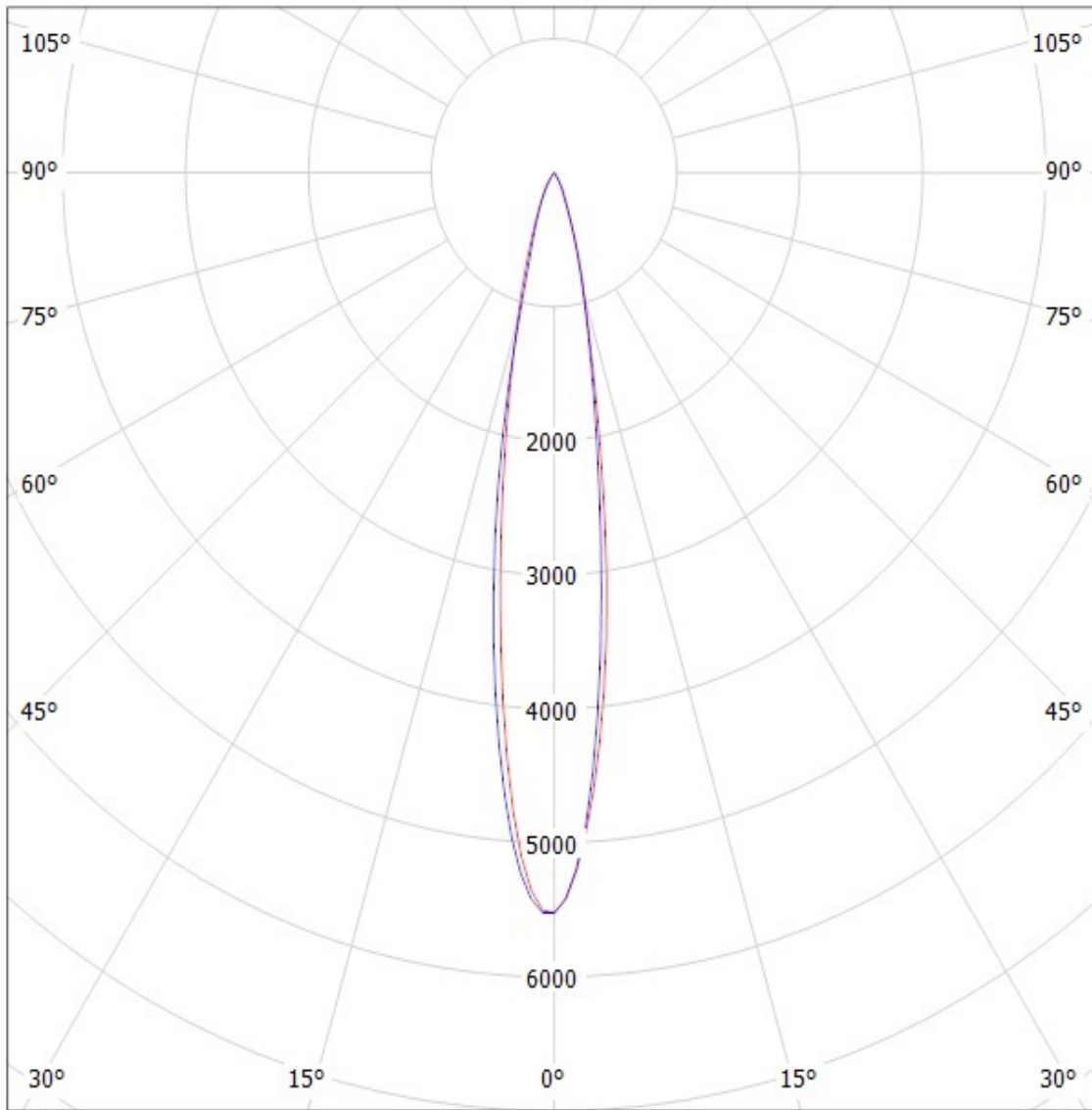
Luminaire: Ledil Oy CA11420_TINA2-D_(3535_Ceramic_gen2) Efficiency=86%
Lamps: 1 x LG 3535 Ceramic gen2 (PKG5700K) 116lm @ 250mA CCT=6200K P=0.7W I=250mA



Ledil Oy CA11420_Tina2-XP-G-D-black LOR=95% / LDC (Polar)

Luminaire: Ledil Oy CA11420_Tina2-XP-G-D-black LOR=95%

Lamps: 1 x Cree XP-G 89lm 250mA



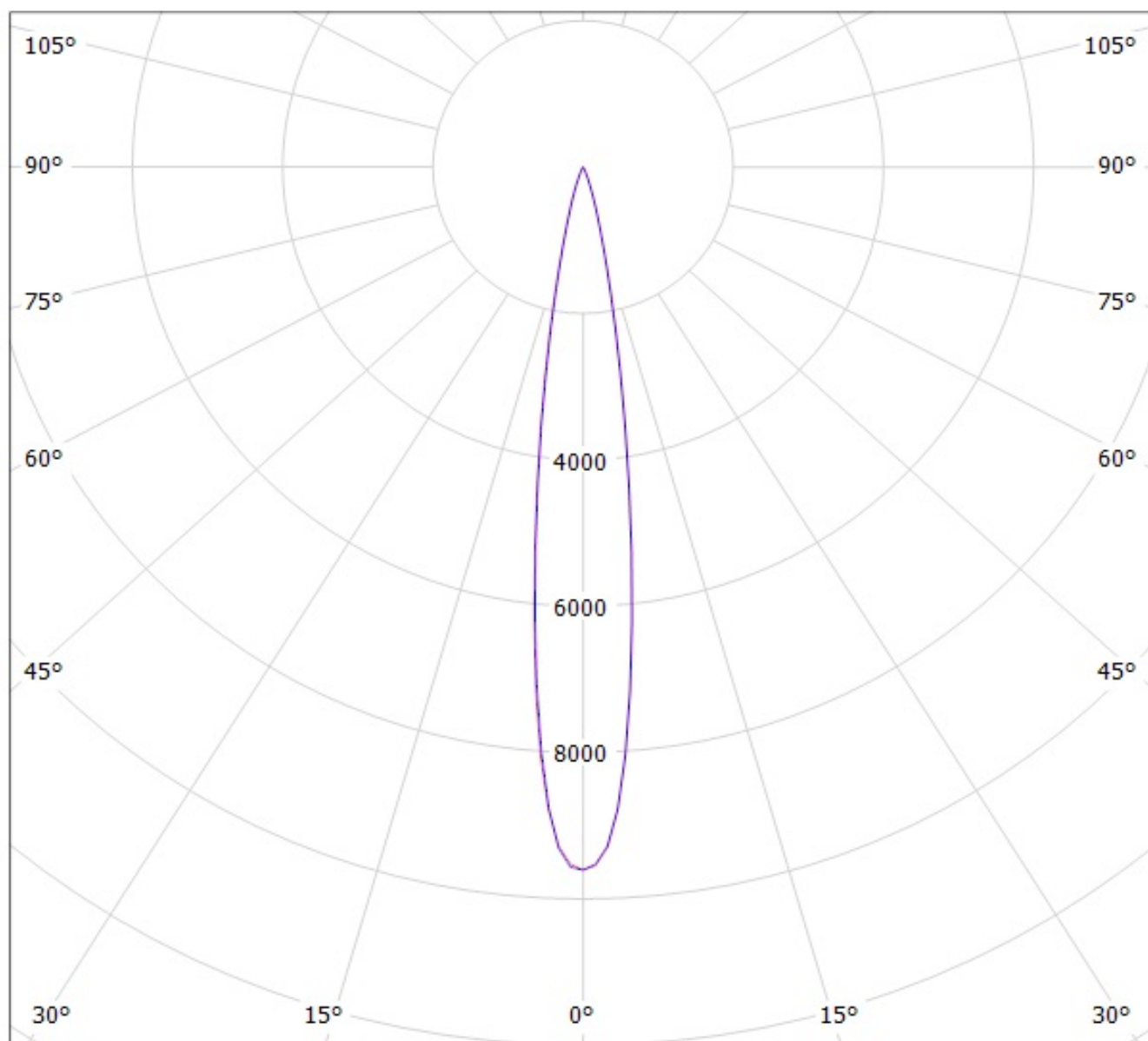
cd/klm

— C0 - C180

— C90 - C270

SIMULATED

Luminaire: Ledil Oy CA11420_TINA2-D-BLK_XT-E-AWT_SIMULATED CA11420_TINA2-D-BLK_XT-E-AWT_SIMUI
Lamps: 1 x CREE XT-E-AWT (White) 100lm

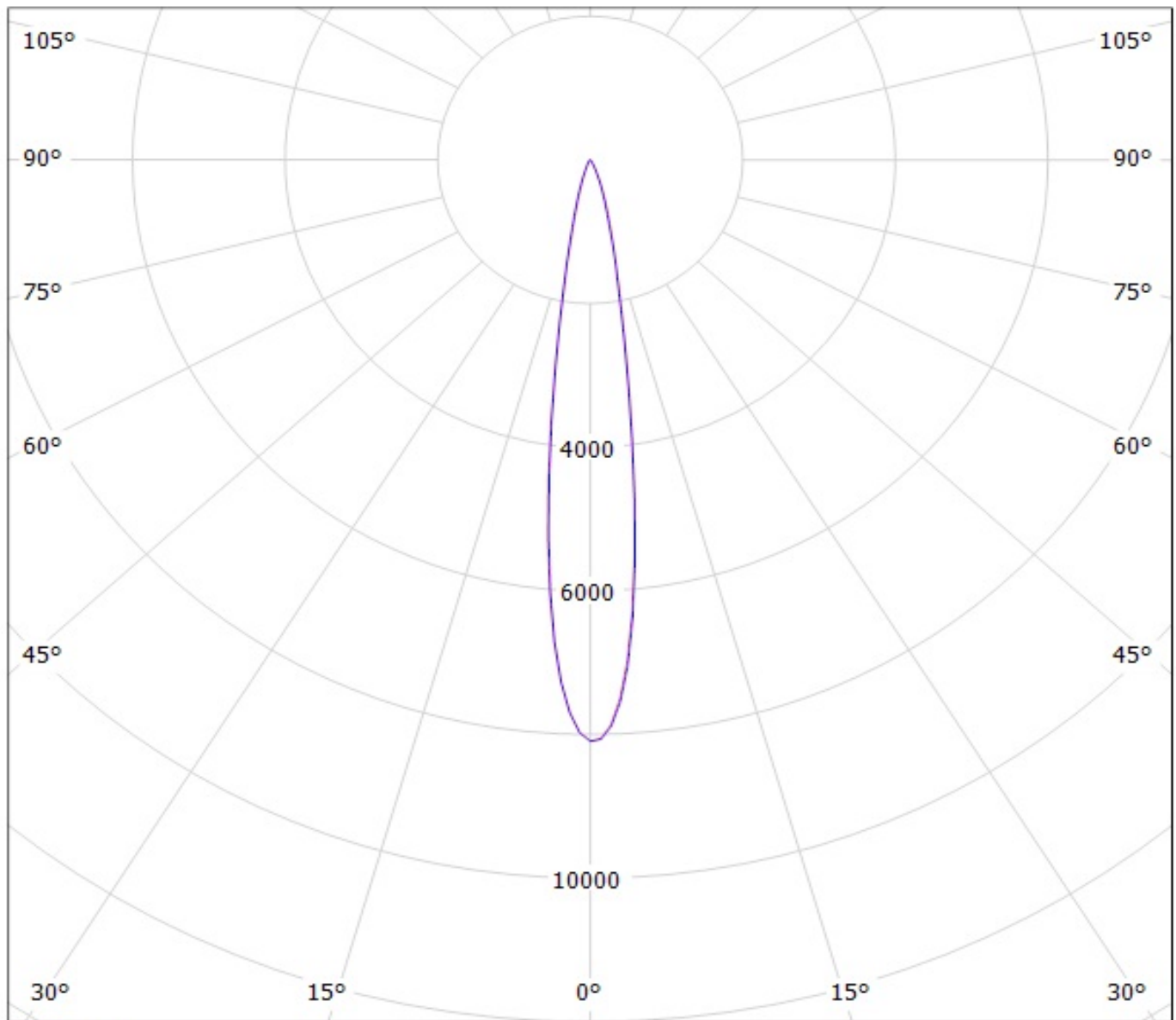


cd/klm

— C0 - C180

— C90 - C270

Valaisin: LEDIL OY CA11420_TINA2-D_(XP-G2) Efficiency=90%
Lamput: 1 x Cree XP-G2 (109.1lm @ 250mA)

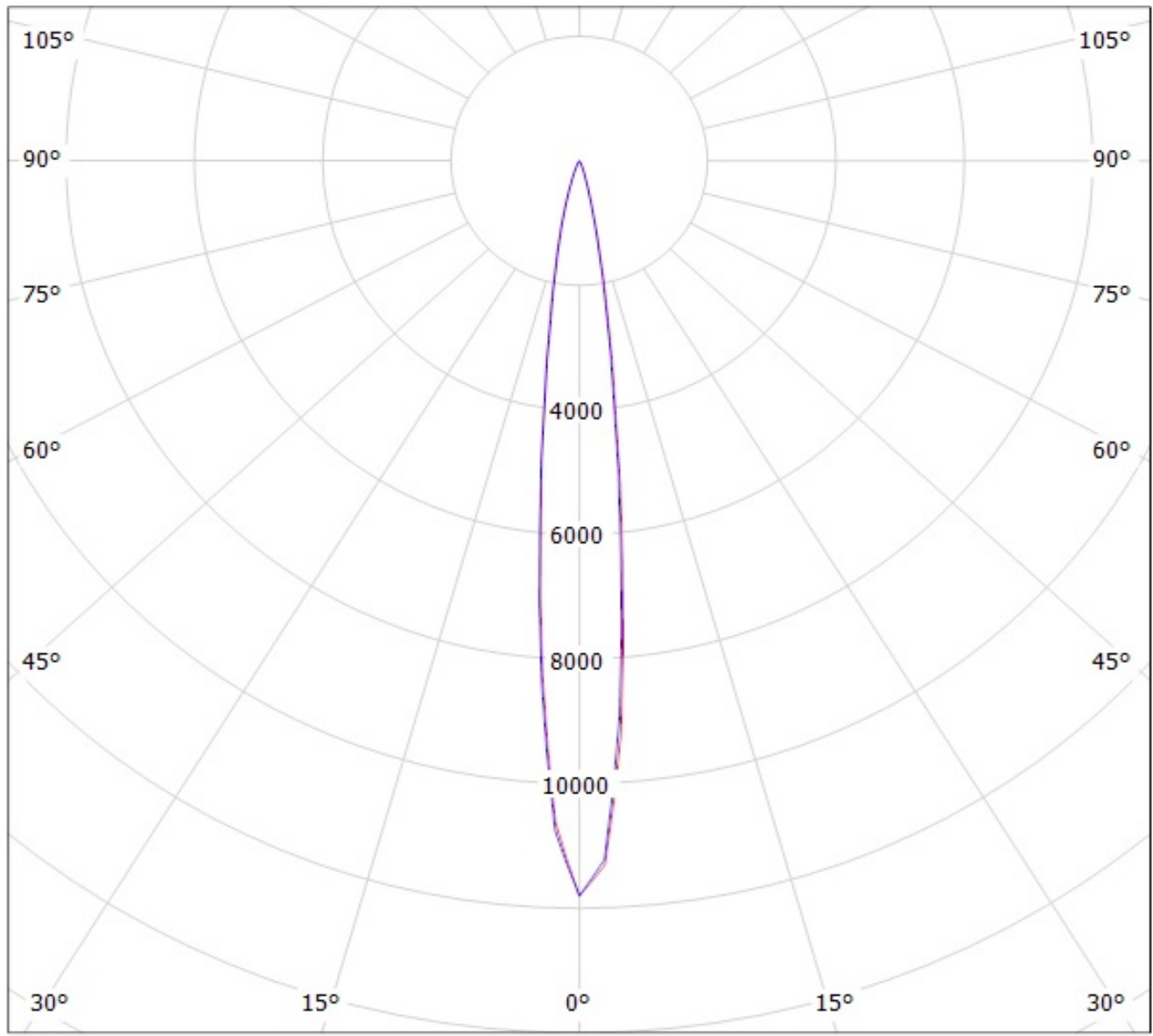


cd/klm

— C0 - C180

— C90 - C270

Luminaire: Ledil Oy CA11420_TINA2-D (CREE XP-E2 (92 lm @ 250 mA)) Efficiency=86%
Lamps: 1 x CREE XP-E2 (92 lm @ 250 mA)

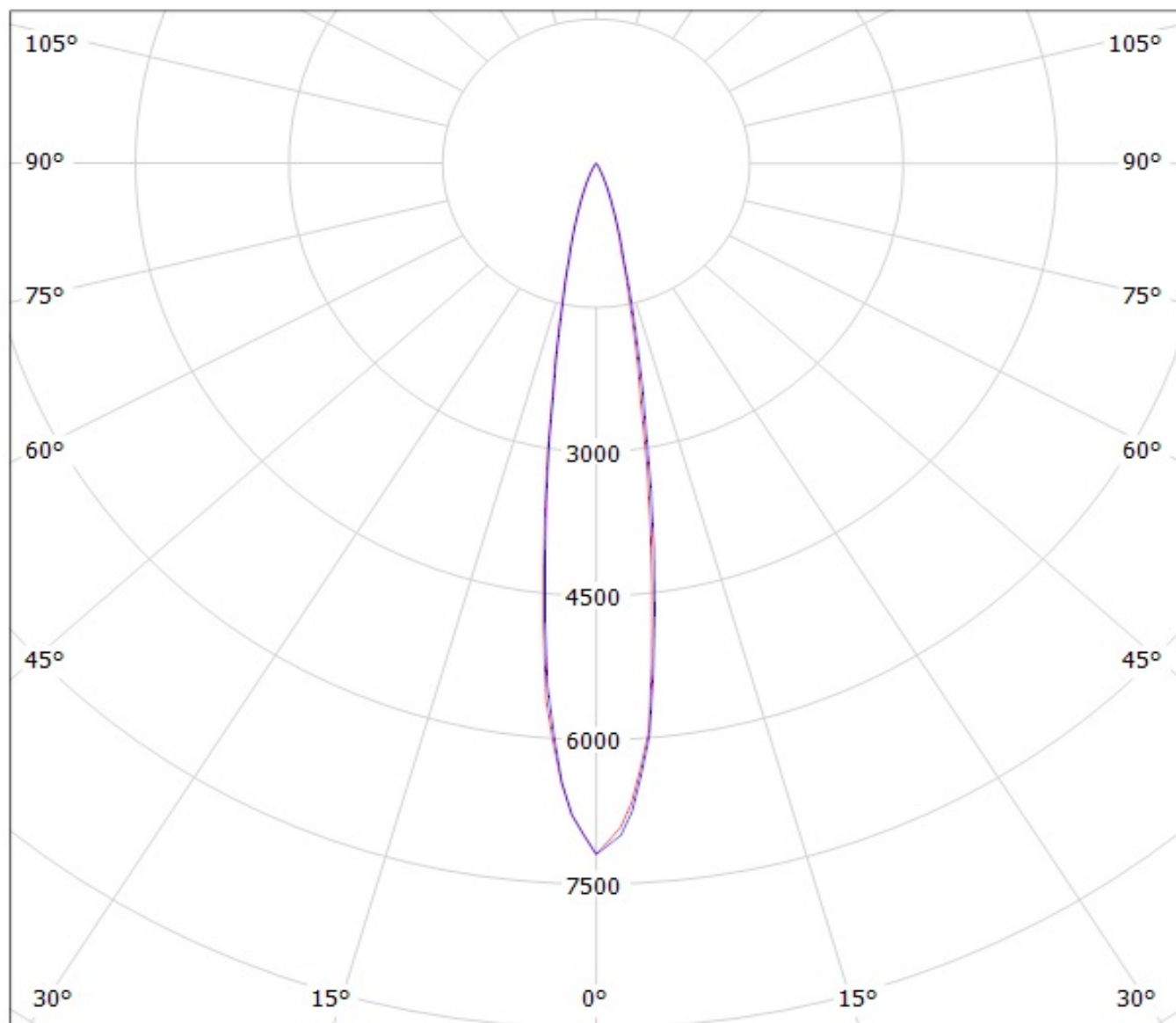


cd/klm

— C0 - C180

— C90 - C270

Luminaire: Ledil Oy CA11420_TINA2-D_(3535_Ceramic_gen2) Efficiency=86%
Lamps: 1 x LG 3535 Ceramic gen2 (PKG5700K) 116lm @ 250mA CCT=6200K P=0.7W I=250mA



cd/klm

— C0 - C180

— C90 - C270

NOTE: The typical divergence will be changed by different color, chip size and chip position tolerance. The typical total divergence is the full angle measured where the luminous intensity is half of the peak value.