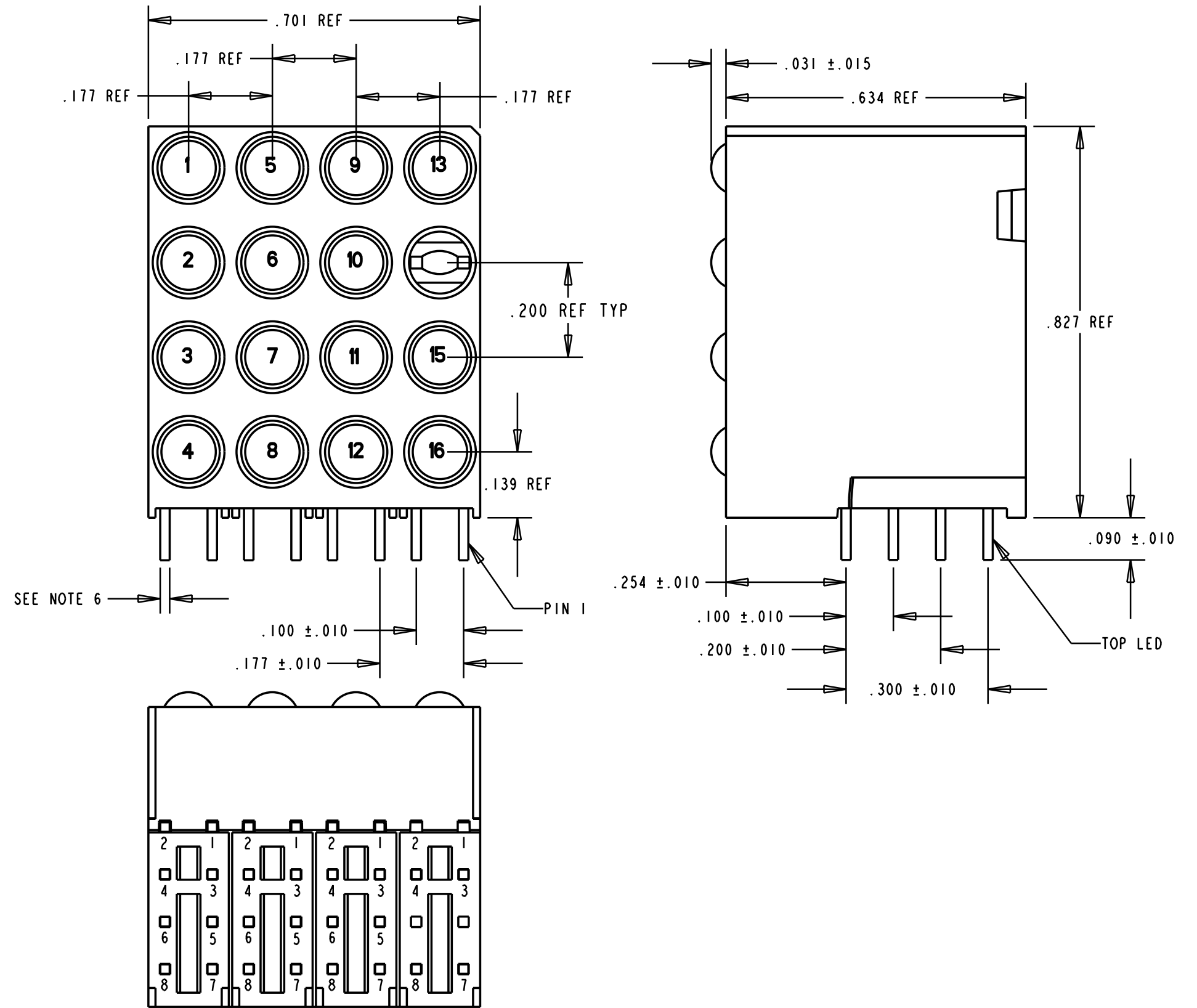


POSITION	COLOR	POSITION	COLOR	POSITION	COLOR	POSITION	COLOR
1	YELLOW	5	YELLOW	9	YELLOW	13	YELLOW
2	GREEN	6	GREEN	10	GREEN	14	** BLANK **
3	YELLOW	7	YELLOW	11	YELLOW	15	YELLOW
4	GREEN	8	GREEN	12	GREEN	16	GREEN

REV.	ECN NO.	REVISIONS	DRN.	CKD.	APP.	DATE
A		NEW RELEASE	AV	DC	NO	2-29-00
B		ADD PACKAGING INFO, ADD 3COM PART NO TO NOTES	AV			

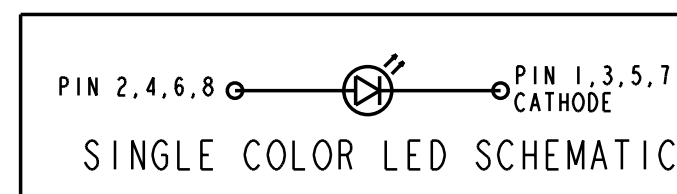
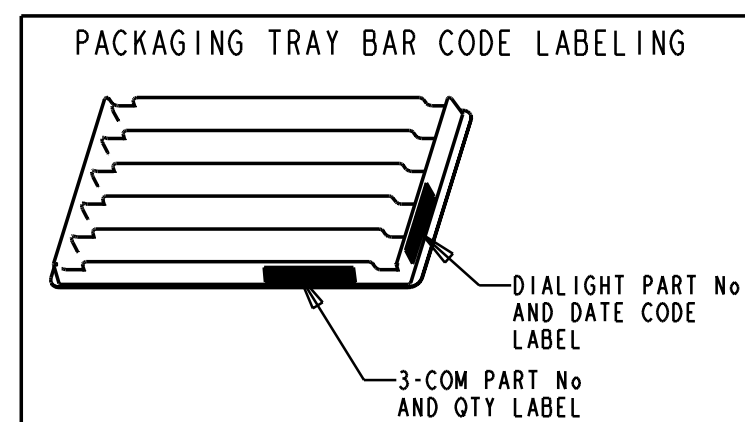
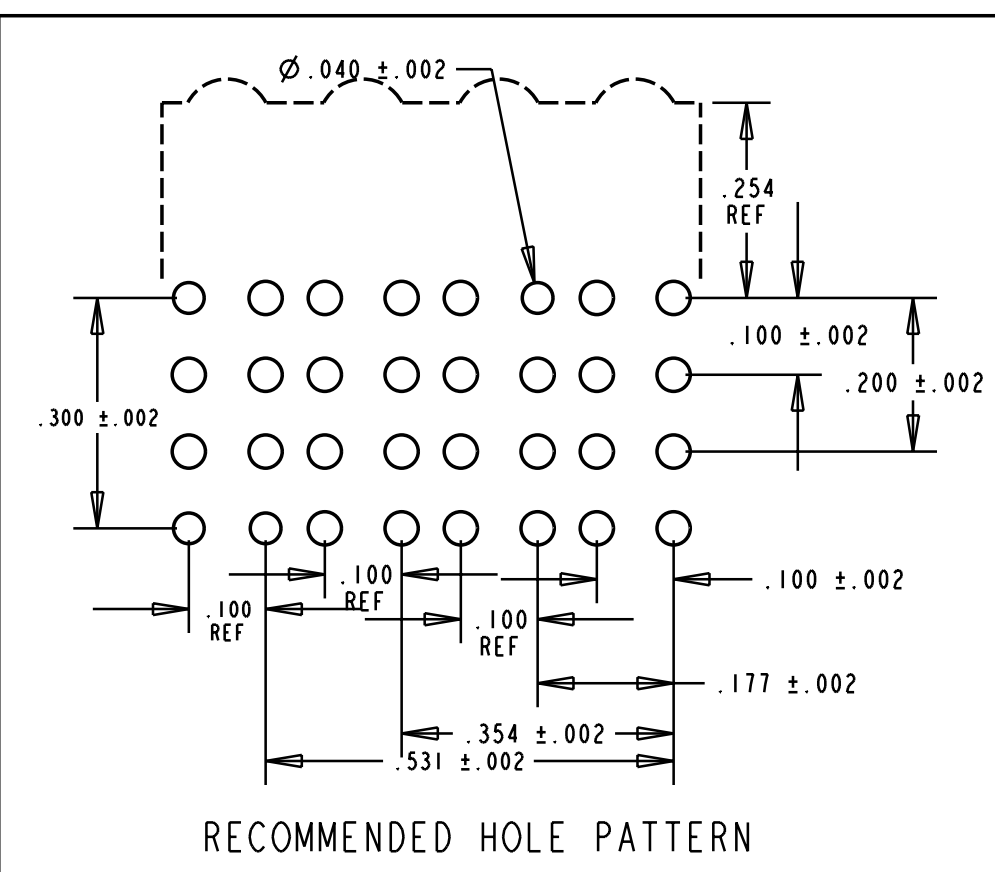
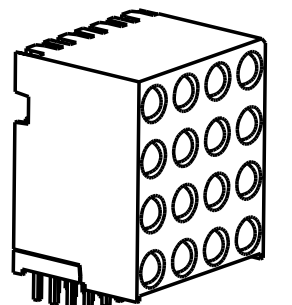
OPERATING CHARACTERISTICS AT 25°C AMBIENT						
CHARACTERISTICS		MIN	TYP	MAX	UNITS	TEST CONDITIONS
LUMINOUS INTENSITY	GREEN	4.7	12.6		mcd	I _r = 10 mA
	YELLOW	7.4	10.0			
FORWARD VOLTAGE	GREEN		2.1	2.8	V	I _r = 20 mA
	YELLOW		2.1	2.8		
REVERSE CURRENT	GREEN			100	μA	V _a = 5 V
	YELLOW			100		
PEAK WAVELENGTH	GREEN		565		nm	
	YELLOW		585			
VIEWING ANGLE	ALL		60		Degree	
CAPACITANCE	GREEN		35		pf	V _r = 0, f = 1 MHz
	YELLOW		15			

ABSOLUTE MAXIMUM RATING AT 25°C AMBIENT			
	GREEN	YELLOW	UNITS
POWER DISSIPATION	100	60	mW
DERATE LINEARLY FROM 50°C	0.4	0.25	mA/°C
CONTINUOUS FORWARD CURRENT	30	20	mA
PEAK FORWARD CURRENT (1/10 DUTY CYCLE, 0.1 ms PULSE WIDTH)	120	80	mA
LEAD SOLDERING TEMPERATURE, 5 SEC., 1/16" FROM BODY	260		°C
OPERATING TEMPERATURE	-55 TO 100		°C
STORAGE TEMPERATURE	-55 TO 100		°C



NOTES:

- 3-COM PART NUMBER = 7320-455-023 (REF)
- LEADS TO FIT INTO HOLES SPACED AS PER HOLE PATTERN)
- LEADS TO BE FREE OF DEFORMATION AFTER BENDING AND CUTTING
- LED LEAD DIMENSIONS SHOWN ARE MEASURED AT HOUSING EXIT
- PIN NUMBERS ARE FOR REFERENCE ONLY AND DO NOT APPEAR ON PART
- PACKAGING =
BLOCKS ARE PLACED IN CLEAR ANTISTATIC TRAY
80 BLOCKS/TRAY = 5 TRAYS/BOX = 400 BLOCKS/BOX
- LED LEAD THICKNESS =
.018 X .016 = ALL LEDS
- DIALIGHT PART NUMBER = 568-0016-811



THIS DRAWING AND THE CONTENTS HEREIN ARE CONFIDENTIAL AND THE SOLE PROPERTY OF DIALIGHT. REPRODUCTION OF THIS DRAWING OR CONSTRUCTION OF ANY PARTS WITHIN THIS DRAWING ARE FORBIDDEN WITHOUT THE WRITTEN CONSENT OF DIALIGHT.		
SCALE 4:1	DRAWING NUMBER	REV
ALL DIM'S IN: INCHES	C-16667	B
TOLERANCES: UNLESS OTHERWISE SPECIFIED	TITLE	
FRACTIONS: ±1/64	4X4 CBI ARRAY BLOCK	
DECIMALS (.XX): ±.020	MATERIAL	
DECIMALS (.XXX): ±.015	Dialight	
DECIMALS (.XXXX): ±.010	1913 ATLANTIC AVE.	
ANGLES: ±3°	MANASQUAN, N.J. 08736	
FINISH:	FSCM 83330	SHEET OF FAMILY TABLES: