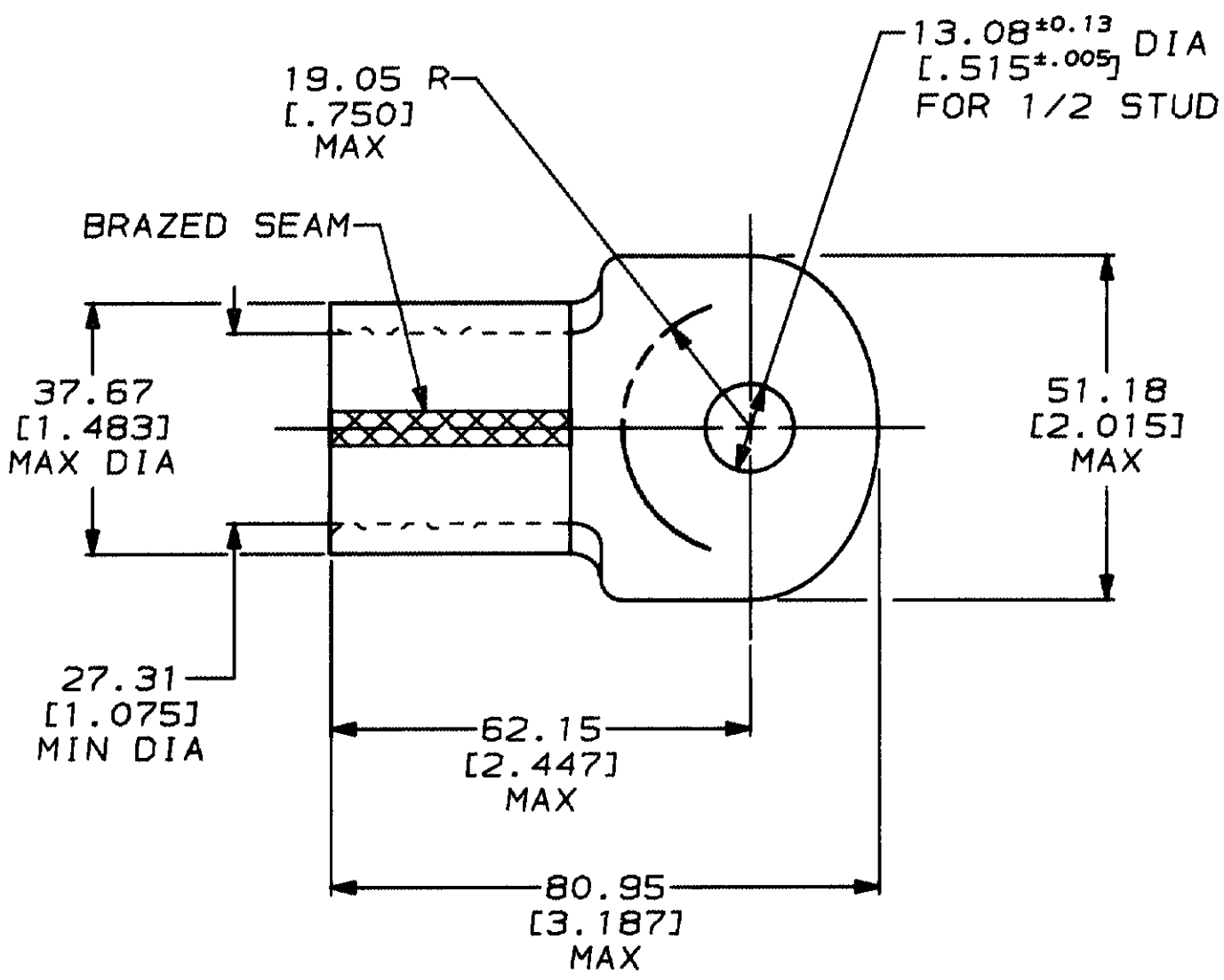


THIS DRAWING IS UNPUBLISHED. RELEASED FOR PUBLICATION BY AMP INCORPORATED. ALL INTERNATIONAL RIGHTS RESERVED. COPYRIGHT 19

LOC	DIST	P	F	LTR	DESCRIPTION	DATE	APPROVED
G	14			D	REVISED & REDRAWN PER G-5803	6/12/92	DKS / AJK



322269
PART NO

DO NOT SCALE PRINT. UNLESS SPECIFIED DIMENSIONS IN mm (IN) TOLERANCES ON: 2 PLC DEC * 0.20(.008) 3 PLC DEC * - ANGLES * -	DR 6/12/92 DK SCHRUM	AMP AMP Incorporated Harrisburg, PA 17105-3608
	CHK 6/26/92 RD HEIM	
MATERIAL COPPER ASTM B-152 ANNEALED	APPD 6/26/92 AJ KAUFMAN	NAME TERMINAL, RING TONGUE, SOLISTRAND™ WIRE SIZE: 253.0-304.0mm ² [500-600] MCM
FINISH TIN PLATE 0.00254[.000100] MIN THK PER MIL-T-10727	APPD 6/26/92 CR RHOADS	SIZE A
	PRODUCT SPEC -	CAGE CODE 00779
	APPLICATION SPEC -	DRAWING NO ©-322269
	WEIGHT -	SCALE 1:1
		SHEET 1 OF 1