

# Options

## Diffusion Plates

Refer to our website for product details.

CCS diffusion plates

Search



You can also use your smartphone or cell phone.

For quick access.

- PD3 series
- PD2 series
- STU-3000
- PSB series
- POD series
- PTU2 series
- PF-A4048-2
- PB-2430-1
- CC-ST-1024
- BB series
- PJ series
- CC-PJ-0707
- PSCC
- PSB3-30024
- Lens Filters
- Diffusion Plates
- Polarizing Plates
- Light Control Films
- Brackets
- Other
- Extension Cables

Can prevent glare, which is a problem when making images of glossy workpieces.



For the Ring Lights  
LDR2/LDR-PF series



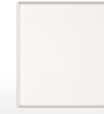
For the Low-angle Ring Lights  
LDR2-LA series



For the Bar Lights  
LDL2-19X4 series  
LDL2-33X8 series  
LDL2 series  
LDL-PF series



For the Coaxial Lights  
LFV3/LFV-PF series



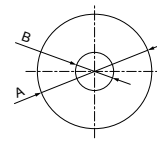
For the Coaxial Lights  
LFV3/LFV-PF series  
(End of the model name: -UF)

### For the Ring Lights LDR2 / SQR / LDR-PF series

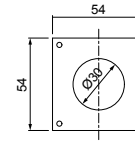
Model name	Applicable Light Unit (Common for all colors)	Dimensions		
		A	B	Thickness
DF-LDR-32	LDR2-32	Ø32	Ø9	(2)
DF-LDR-42	LDR2-42	Ø42	Ø14	
DF-LDR-50	LDR2-50	Ø50	Ø25	
DF-LDR-70	LDR2-70	Ø66	Ø35	
DF-LDR-90	LDR2-90	Ø90	Ø40	
DF-LDR-120-45	LDR2-120	Ø120	Ø45	
DF-SQR-56	SQR-56	Refer to the drawing		
DF-LDR-PF-36	LDR-PF-36	Ø36	Ø10	
DF-LDR-PF-54	LDR-PF-54	Ø54	Ø22	
DF-LDR-PF-75	LDR-PF-75	Ø75	Ø35	

\* An AD series adapter is needed when installing Light Units. (Product Page ▶ P. 279)

• Dimensions (mm)  
DF-LDR-□□  
DF-LDR-PF-□□



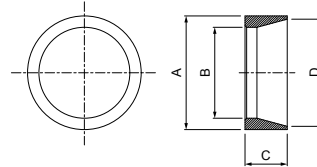
DF-SQR-56



### For the Low-angle Ring Lights LDR2-LA series

Model name	Applicable Light Unit (Common for all colors)	Dimensions			
		A	B	C	D
DF-LDR-48LA	LDR2-48-LA	Ø22	Ø13	18.5	Ø21.77
DF-LDR-74LA	LDR2-74-LA	Ø48	Ø40	24	Ø50
DF-LDR-100LA	LDR2-100-LA	Ø70	Ø56	26	Ø66
DF-LDR-132LA	LDR2-132-LA	Ø98	Ø82		Ø92
DF-LDR-170LA	LDR2-170-LA	Ø133.5	Ø120	32	Ø130
DF-LDR-208LA	LDR2-208-LA	Ø173.5	Ø152		Ø174.3

• Dimensions (mm)

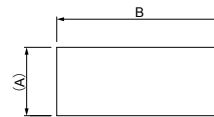


### For the Bar Lights LDL2/LDL-PF series

Model name	Applicable Light Unit (Common for all colors)	Dimensions	
		A	B
DF-LDL2-19X4	LDL2-19X4	6.4	28
DF-LDL2-33X8	LDL2-33X8	10.4	44
DF-LDL2-41X16	LDL2-41X16	23.2	46
DF-LDL2-80X16	LDL2-80X16		84.7
DF-LDL2-119X16	LDL2-119X16	22	123.7
DF-LDL2-158X16	LDL2-158X16		162.7
DF-LDL-PF-52X18	LDL-PF-52X18	158	58
DF-LDL-PF-102X18	LDL-PF-102X18		108
DF-LDL-PF-152X18	LDL-PF-152X18		158

Model name	Applicable Light Unit (Common for all colors)	Dimensions		
		A	B	
DF-LDL2-26X30	LDL2-26X30	37.2	30.7	
DF-LDL2-50X30	LDL2-50X30		54.7	
DF-LDL2-74X30	LDL2-74X30		79	
DF-LDL2-98X30	LDL2-98X30		102.7	
DF-LDL2-122X30	LDL2-122X30		126.7	
DF-LDL2-146X30	LDL2-146X30		150.7	
DF-LDL2-218X30	LDL2-218X30		222.7	
DF-LDL2-266X30	LDL2-266X30		270.7	
DF-LDL-PF-52X30	LDL-PF-52X30		34	58
DF-LDL-PF-102X30	LDL-PF-102X30			108
DF-LDL-PF-152X30	LDL-PF-152X30	158		

• Dimensions (mm)



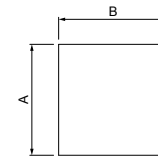
### For the Coaxial Lights LFV3/LFV-PF series

Model name	Transmittance rate	Applicable Light Unit (Common for all colors)	Dimensions		
			A	B	Thickness
DF-LFV3-35	High	LFV3-35/ LFV-PF-35	34	42	(2)
DF-LFV3-35-UF	Low				
DF-LFV3-50	High	LFV3-50/ LFV-PF-50	52	56	
DF-LFV3-50-UF	Low				
DF-LFV3-50X100	High	LFV3-50X100	73	80	
DF-LFV3-50X100-UF	Low				
DF-LFV3-70	High	LFV3-70	106	106	
DF-LFV3-70-UF	Low				

Model name	Transmittance rate	Applicable Light Unit (Common for all colors)	Dimensions		
			A	B	Thickness
DF-LFV3-100	High	LFV3-100	100	106	(2)
DF-LFV3-100-UF	Low				
DF-LFV3-130	High	LFV3-130	130	138	
DF-LFV3-130-UF	Low				
DF-LFV3-200	High	LFV3-200	202	222	
DF-LFV3-200-UF	Low				

Transmittance rate: High...Standard for red and white  
Transmittance rate: Low (End of the model name: -UF)...Standard for blue

• Dimensions (mm)



There are two types of diffusion plates which have different transmittance rates for the Coaxial Lights LFV3 series. Select one to match your work environment.

#### Example of usage

Imaging of can from above



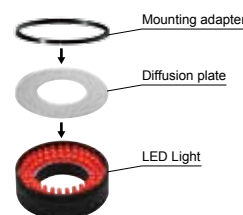
No diffusion plate



Using diffusion plate

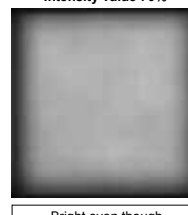
#### Example installation

Example: Attachment of Ring Lights LDR2 series



E.g.: If changing from a low transmittance rate diffusion plate to a high one:

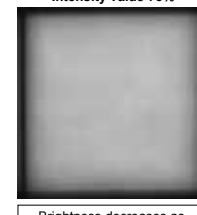
Intensity value 70%



Bright even though uniformity is low.

E.g.: If changing from a high transmittance rate diffusion plate to a low one:

Intensity value 75%



Brightness decreases as uniformity is increased.

**Caution** Diffusion plates are consumables. Heat may cause deformation or discoloring depending on the use environment. Make sure that countermeasures against overheating are implemented and that the temperature does not exceed the operating limit.