

User Manual

VLINX

VESR4x4

SERIAL SERVER



Vlinx Serial Servers

Model VESR4x4

Documentation Number: VESR4x4_R001_0413m

This product designed and manufactured in Ottawa, Illinois USA
using domestic and imported parts by



International Headquarters:

707 Dayton Road - P.O. Box 1040 - Ottawa, IL 61350 USA
Phone (815) 433-5100 - General Fax (815) 433-5105

Website: www.bb-elec.com

European Headquarters:

B&B Electronics
Westlink Commercial Park - Oranmore, Co. Galway, Ireland

Phone +353 91-792444 - Fax +353 91-792445

Website: www.bb-europe.com

B&B Electronics Mfg. Co. Inc – January 2013

©2013 B&B Electronics Mfg Co Inc No part of this publication may be reproduced or transmitted in any form or by any means, electronic or mechanical, including photography, recording, or any information storage and retrieval system without written consent. Information in this manual is subject to change without notice, and does not represent a commitment on the part B&B Electronics Mfg Co Inc.

B&B Electronics Mfg Co Inc shall not be liable for incidental or consequential damages resulting from the furnishing, performance, or use of this manual. All brand names used in this manual are the registered trademarks of their respective owners. The use of trademarks or other designations in this publication is for reference purposes only and does not constitute an endorsement by the trademark holder.

Table of Contents

Introduction	7
About VESR4x4 Serial Servers	7
VESR4x4 Serial Server Model Numbering.....	8
List of VESR4x4 Serial Server Models	8
VESR4x4 Features	9
Vlinux Manager Configuration Software.....	9
VESR4x4 Hardware.....	11
Package Checklist.....	11
VESR4x4 Serial Server Enclosures and Mounting	11
LED Indicators	11
Power LED	12
Ready LED	12
Ethernet Speed LEDs (1 & 2).....	12
Ethernet Link LEDs (1 & 2).....	12
Serial Port LEDs (P1, P2, P3 & P4)	12
Reset Switch.....	13
Using the Reset Switch to Initiate a Hardware Reset	13
Using the Reset Switch to Enter Console Mode	13
Using the Reset Switch to exit Console Mode.....	13
Using the Reset Switch to Reload Factory Default Settings	14
Ethernet Connector.....	14
Fiber Optic Connectors	14
Serial Port Connectors.....	15
Power Connector	15
Mounting Hardware.....	16
Installation and Initial Setup.....	19
Connecting the Power Supply	19
Connecting VESR4x4 Serial Servers to Serial Devices.....	19
RS-232.....	19
RS-422.....	20
RS-485.....	20
Connecting VESR4x4 Serial Servers to a Network	21
Ethernet Connection (10BaseT/100BaseTX)	21
Fiber Optic Connection	21

Ethernet Pass-through Port	21
VESR4x4 Serial Server Configuration	23
Configuring via the Network using Vlinx Manager	23
Configuring via the network using a Browser	23
Configuring via a Serial Port using Vlinx Manager (Console Mode)	24
VESR4x4 Serial Server Operational Connections	24
Installing and Starting Vlinx Manager	26
Discovering Serial Servers	27
Configuring the Serial Server	28
Overview of the Vlinx Manager	28
Icons	29
Serial Server Information Table	29
Configuration Pane	30
Logging In	31
Navigating the Configuration Pages	31
Setting up the Serial Server Name and Password	32
Changing the serial server's name:	32
Changing the password:	32
Setting up IP Addressing	33
Setting up Dynamic IP Addressing	33
Setting up Static IP Addressing	33
Setting up Serial Ports	34
Setting up Port Network Parameters	34
TCP Configuration	35
UDP Configuration	36
Setting up Virtual COM (VCOM) Operation	38
Setting up Paired Mode Operation	39
Setting up Advanced Network Settings	41
Configuring when network connections will be forced closed	42
Configuring when data packets are sent	43
Saving/Restoring the Configuration Settings	46
Adding Virtual COM Ports	47
Removing Virtual COM Ports	48
Upgrading the Serial Server Firmware	49
Downloading Firmware Files	49
To download the latest firmware files from an FTP site on the Internet	50
To download the latest firmware files from a file	50

Uploading the Firmware to the Serial Server	50
Diagnostics.....	51
Testing a Serial Server Connection	51
Testing a Virtual COM Port.....	52
Listing/Descriptions of Serial Server Settings	54
Appendix	63
Appendix A: Default Server Settings	63
Appendix B: Product Specifications	64
General Specifications	64
Controls, Indicators and Connector Specifications	65
Serial Interface Specifications	65
Network Specifications	66
TCP/UDP Ports Table	66
Appendix C: Dimensional Diagrams	68
Appendix D: Connector Pinouts	69
DB-9M Connector.....	69
Terminal Block	69
Standard Ethernet Cable RJ-45 Pinout	70

SECTION 1

Introduction

Thank you for purchasing a **VESR4x4 Serial Server** product! This product has been manufactured to the highest standards of quality and performance to ensure your complete satisfaction.



Figure 1. A VESR4x4 Serial Server

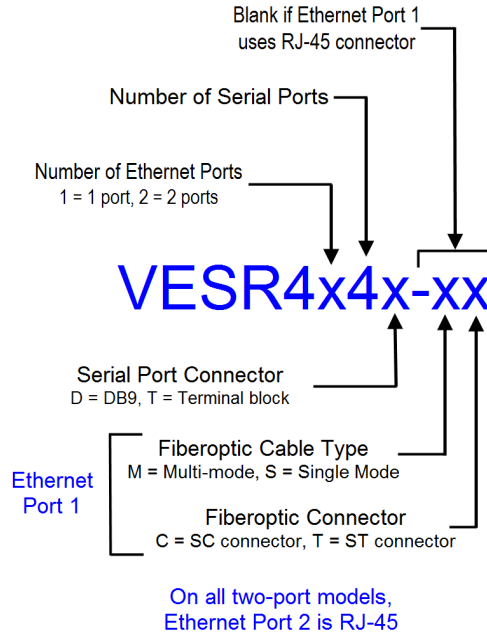
About VESR4x4 Serial Servers

VESR4x4 Serial Servers connect serial devices (RS-232, RS-422 or RS-485) to Ethernet networks, allowing the serial device to become a node on the network. The serial ports can be accessed over a LAN/WAN using Direct IP Mode, Virtual COM Port, or Paired Mode connections. VESR4x4 Serial Servers feature 10BaseT or 100BaseTX copper network media and several fiber optic media options, depending on the model. Many models also feature an additional copper Ethernet pass-through port. VESR4x4 Serial Servers are built for use in industrial environments and feature heavy duty metal enclosures that are panel and DIN rail mountable. The product operates from a range of DC power supply voltages and features pluggable terminal block power connectors as well as a locking barrel connector that facilitates redundant power sources.

VESR4x4 Serial Server Model Numbering

VESR4x4 Serial Servers are a growing family of products. All models incorporate four serial connections and, depending on the model, may have one or two Ethernet connections with an optional fiberoptic connection.

The following diagram shows the model numbering scheme:



List of VESR4x4 Serial Server Models

The following table lists the various VESR4x4 models available.

Model Number	Ethernet Ports	Ethernet Connector 1	Ethernet Connector 2	Serial Connector (x4)
VESR414D	1	RJ-45	---	DB9 Male
VESR414T	1	RJ-45	---	Terminal Block
VESR424D	2	RJ-45	RJ-45	DB9 Male
VESR424D-MC	2	Multi-mode SC	RJ-45	DB9 Male
VESR424D-MT	2	Multi-mode ST	RJ-45	DB9 Male
VESR424D-SC	2	Single-mode SC	RJ-45	DB9 Male
VESR424D-ST	2	Single-mode ST	RJ-45	DB9 Male
VESR424T	2	RJ-45	RJ-45	Terminal Block
VESR424T-MC	2	Multi-mode SC	RJ-45	Terminal Block
VESR424T-MT	2	Multi-mode ST	RJ-45	Terminal Block
VESR424T-SC	2	Single-mode SC	RJ-45	Terminal Block
VESR424T-ST	2	Single-mode ST	RJ-45	Terminal Block

VESR4x4 Features

- VESR414x series models – single Ethernet connector
- VESR424x-xx series models – two Ethernet connectors
- Ethernet Fiber port models available
- Ethernet pass through ports (on two Ethernet port models)
- Multi-interface serial ports (RS-232, RS-422, RS-485)
- DB-9M and pluggable terminal block serial port connector options
- All serial ports are software selectable for RS-232, RS-422 or RS-485 2- and 4-wire communication
- Configuration can be done via network or direct serial connection
- Rugged metal case, DIN rail or panel mountable
- Accepts DC power over a wide voltage range
- Two power connections (pluggable terminal strip and locking barrel connector) can be used for redundant power supply
- 10/100 Mbps Ethernet with Auto Selection
- TCP Client or Server, or UDP operation - configurable
- Virtual COM port and Paired Mode capabilities
- Firmware Upload over the Ethernet port for future revisions/upgrades
- Software Support - Windows 2000, XP (32/64 bit), 2003 Server (32/64 bit), Vista (32/64 bit), 2008 Server (32/64 bit), Windows 7 (32/64 bit)
- Configuration of Ethernet and serial port settings using Vlinx Manager software or built-in web server

Vlinx Manager Configuration Software

Vlinx Manager configuration software enables you to find connected serial servers, configure them, upgrade serial server firmware, and save/load configuration files. It features a graphical user interface (GUI) that is convenient and easy to use. The software also makes it easy to add and remove virtual COM ports on your computer.

SECTION 2

VESR4x4 Hardware

VESR4x4 Serial Servers are enclosed in rugged DIN rail or panel mountable enclosures and feature:

- LED indicators
- Power, Ethernet and serial connectors
- A recessed Reset (mode) switch.

Package Checklist

VESR4x4 Serial Servers are shipped with the following items included:

- VESR4x4 Serial Server Module
- Quick Start Guide
- CD with User Manual, Quick Start Guide
- Panel mount and DIN rail mount adapters

VESR4x4 Serial Server Enclosures and Mounting

All VESR4x4 models are built into similar enclosures. Modules are DIN rail or panel mountable.



Figure 2. Front View of the VESR4x4 Serial Server

LED Indicators

VESR4x4s have LED indicators for **Power**, Serial **Server Ready** indication, **Ethernet Speed** and **Link** status, and **Serial Port** status.



Figure 3. Front Panel of the VESR424D

Power LED

The **Power** LED illuminates when 10 to 58 VDC power is applied to either power connector.

Ready LED

The **Ready** LED (green) illuminates continuously while the unit is initializing. It flashes once per second when the system is operating correctly. If the LED is not flashing, it indicates that something is wrong (e.g. another device on the network at the same IP address).

Ethernet Speed LEDs (1 & 2)

The **Ethernet Speed** LED illuminates (green) if the Ethernet connection is operating at 100Mbit/sec. The LED is off if the connection is operating at 10Mbit/sec.

Ethernet Link LEDs (1 & 2)

The **Ethernet Link** LED illuminates when a connection has been made. It flashes when there is data traffic on the Ethernet link.

Serial Port LEDs (P1, P2, P3 & P4)

Each serial port has an associated LED. **Serial Port** LEDs flash (green) when data is being transmitted or received on the serial ports. When the LED is illuminated it indicates the serial port is open.

Note: LEDs on the serial server are also used to indicate various Reset modes, as described in the following section.

Reset Switch

A recessed momentary **Reset** switch is located on the side of the enclosure. To activate the switch, insert a small plastic tool through the hole in the enclosure and press lightly.

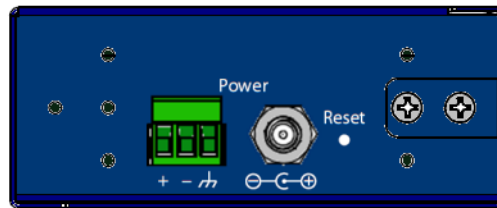


Figure 4. Side View of the Serial Server

The Reset switch is used to:

- Initiate a Hardware Reset
- Enter Console Mode
- Reload factory defaults

Using the Reset Switch to Initiate a Hardware Reset

Hold the Reset switch in for 0 to 2 seconds. The P1 LED illuminates while the switch is being held in. Release the switch in less than two seconds or the serial server will enter Console Mode.

Using the Reset Switch to Enter Console Mode

Hold the Reset switch for between two and ten seconds. The P1 LED illuminates for the first two seconds and the P1 LED goes out; then the P2 LED illuminates until the Reset switch is released. Release the switch in less than 10 seconds or the serial server will reset to factory default settings. The serial server will re-boot and enter Console Mode. LED P1 will be on while the unit is in Console Mode.

Using the Reset Switch to exit Console Mode

Press the Reset switch for less than two seconds, or remove power from the serial server, wait a few seconds, and turn the power on again. The LEDs go back to their normal states when the device resumes normal operation.

Using the Reset Switch to Reload Factory Default Settings

Hold the Reset switch for more than ten seconds. The P1 LED illuminates for the first two seconds; then the P2 LED illuminates. After 10 seconds the P1 and P2 LEDs will illuminate. When the switch is released, both the P1 and P2 LEDs will go out. The Ready LED will flash quickly while the serial server re-initializes to factory default settings, and then the server will re-boot.

Ethernet Connector

Serial server models equipped with 10BaseT/100BaseTX network connections use an RJ45 receptacle. The serial server is connected to a standard Ethernet network drop using a straight-through RJ45 (male) Ethernet cable. Models with a second RJ45 receptacle act as an Ethernet switch enabling the connection of other devices to the network.

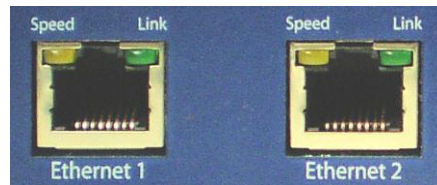


Figure 5. Ethernet Connectors

Note: Refer to Appendix D for connector pinouts.

Fiber Optic Connectors

Serial server models equipped with fiber-optic network connections use either SC or ST connectors, depending on the specific model.

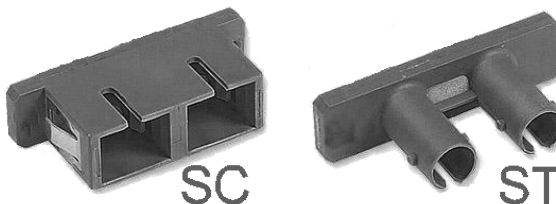


Figure 6. SC and ST Fiber Optic Cable Connectors

Serial Port Connectors

VESR4x4 Serial Servers feature two serial port connector configurations, depending on the model:

- VESR4x4D-x serial servers feature four serial ports, all of which use DB-9M connectors for RS-232, RS-422 and RS-485 connections.
- VESR4x4T-x serial servers feature four serial ports, all of which use five-position removable terminal blocks for RS-232, RS-422 and RS-485 connections.

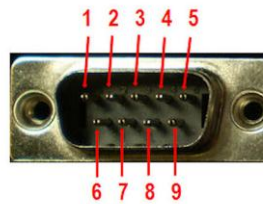


Figure 7. DB-9M Serial Port Connector with Pinout

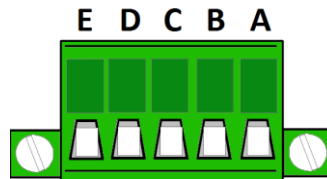


Figure 8. Five-Position Pluggable Terminal Blocks

Note: Refer to Appendix D for connector pinouts.

Power Connector

VESR4x4 serial servers provide two power connectors. One is a three position removable terminal block with +, - and chassis ground connections. The other is a locking barrel jack connector.

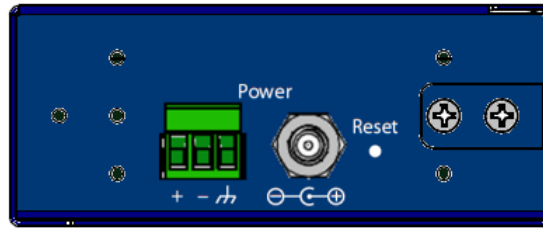


Figure 9. Power Connectors

Mounting Hardware

VESR4x4 Serial Servers can be DIN rail or panel mounted. The necessary hardware is included in the accessory kit, which also includes the screws for attaching the mounting hardware. Two brackets are provided for mounting the serial server flush to a panel or behind a rack-mount instrument panel.

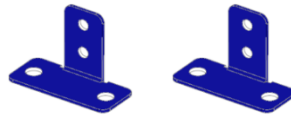


Figure 10. Panel Mount Brackets

Each bracket is mounted using two 4-40 flat-head screws (included). The additional threaded holes on the side of the serial server allow the unit to be mounted in six different configurations.

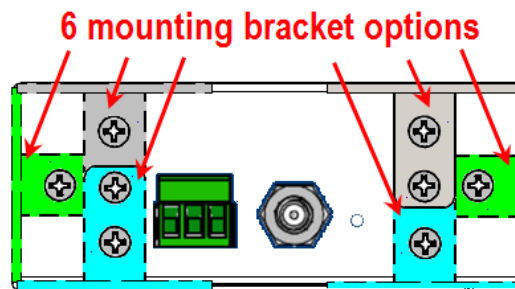


Figure 11. VESR4x4 showing Panel Mount Bracket options

If extra mounting brackets are needed, they can be ordered from B&B Electronics as Kit Number #9030.

The DIN rail mounting bracket attaches to the back of the serial server using three 4-40 flat head screws.



Figure 12. VESR424 with DIN Rail Clip Mounted

SECTION 3

Installation and Initial Setup

This section describes how to install the VESR4x4 Serial Server and configure the device.

Note: In this section devices to be connected to the serial server's serial connections are simply referred to as the "serial device".

Connecting the Power Supply

Connect a **DC power supply** to the power terminals on the side of the serial server. Polarity of the wires is indicated underneath each connector. Acceptable voltages are between 10 VDC and 58 VDC. The power supply must be capable of supplying 6 watts.

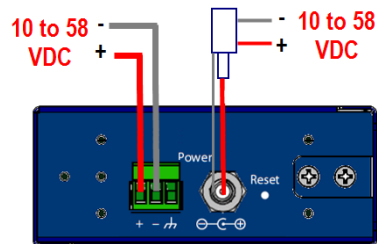


Figure 13. Power Supply Connections

Connecting VESR4x4 Serial Servers to Serial Devices

VESR4x4 Serial Servers can be connected to serial devices using RS-232, RS-422, RS-485 2-wire, or RS-485 4-wire communication. VESR4x4D models use DB-9M connectors and VESR4x4T models use 5-position terminal strips.

RS-232

Models using DB9M connectors support seven RS-232 signal lines (TD, RD, DTR, DSR, RTS, CTS, DCD) plus Signal Ground.

Models using five position pluggable terminal blocks support four signal lines (TD, RD, RTS, CTS) plus Signal Ground.

Signals are single-ended and referenced to Signal Ground. Default communications parameters are 9600, 8, N, 1 (9600 baud, 8 data bits, no parity, 1 stop bit), and no flow control.

Note: The VESR4x4 is configured as a DTE. If it is connected to a computer or other DTE device, use a null modem (cross-over) cable. If the serial device is configured as a DCE, use a straight-through cable.

RS-422

RS-422 connections support two signal pairs: TDA (-), TDB (+), RDA (-), RDB (+) and GND. The data lines are differential pairs (A & B) in which the B line is positive relative to the A line in the idle (mark) state. In RS-422, the transmitter is always enabled. Signal Ground provides a common mode reference for the signal lines.

RS-485

RS-485 connections support 2-wire or 4-wire operation. In RS-485 mode, the transmitter is only enabled when the serial server is transmitting data on the line. This allows other devices to share the bus.

When configured for **4-wire operation** the connection supports two signal pairs: TDA (-), TDB (+), RDA (-), RDB (+) and GND. This makes full-duplex operation possible. The data lines are differential pairs (A & B) in which the B line is positive relative to the A line in the idle (mark) state. Signal Ground provides a common mode reference for the signal lines.

When configured for **2-wire operation** the connection supports one signal pair: Data A (-) and Data B (+). These lines transmit and receive signals using half-duplex operation. The data lines are differential with the Data B line positive relative to Data A in the idle (mark) state. Signal Ground provides a common mode reference for the signal lines.

Note: Refer to Appendix D for connector pinout information.

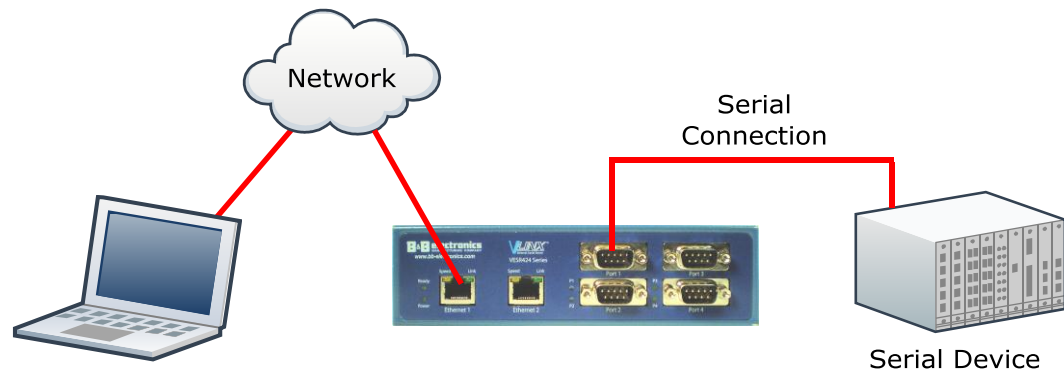


Figure 14. VESR4x4 Connections

Connecting VESR4x4 Serial Servers to a Network

Ethernet Connection (10BaseT/100BaseTX)

When connecting a serial server equipped with a 10BaseT/100BaseTX network connection (RJ45 connector) to an Ethernet network, a standard unshielded twisted-pair cable can be used. **When installing this equipment in industrial or other electrically noisy environments, STP (shielded twisted pair) cable is strongly recommended.** The serial server has an automatic MDIX interface which will sense the pinout of the network interface and provide a cross-over connection if required.

Fiber Optic Connection

When connecting a serial server equipped with a fiber optic interface to an Ethernet network, the appropriate fiber optic cable must be connected between the serial server and the network interface. The TX output of the serial server port must be connected to the RX input of the network interface and vice-versa. Refer to the list of VESR4x4 Serial Server Models (on page 8) for the supported fiber types, distances, and connectors.

Ethernet Pass-through Port

VESR424 serial servers are equipped with an additional RJ45 network port, also known as a pass-through port. This port can be used to connect additional Ethernet devices, such as a local workstation or second serial server, to the network.

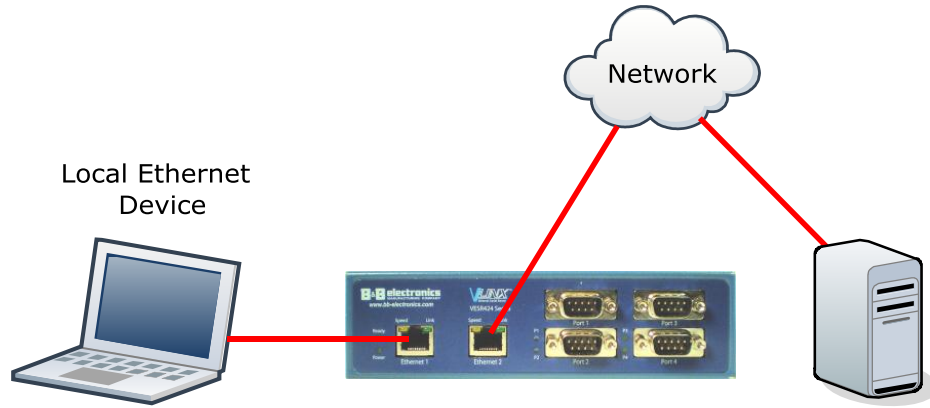


Figure 15. Ethernet Pass-through Port

VESR4x4 Serial Server Configuration

VESR4x4 Serial Servers can be configured using several methods:

- Via the network using Vlinx Manager Software
- Via the network using a web browser
- Via a serial port using Vlinx Manager Software (Console Mode)

Configuring via the Network using Vlinx Manager

VESR4x4 Serial Servers can be configured over the network using Vlinx Manager Software running on a networked PC. Vlinx Manager includes a discovery function that makes it possible to detect the serial server on the network if you do not know its IP address. Once the serial server has been detected, the Vlinx Manager Software can be used to change its settings.

Note: For more information on how to use Vlinx Manager to configure your serial server, refer to Section 4: Configuring the Serial Server

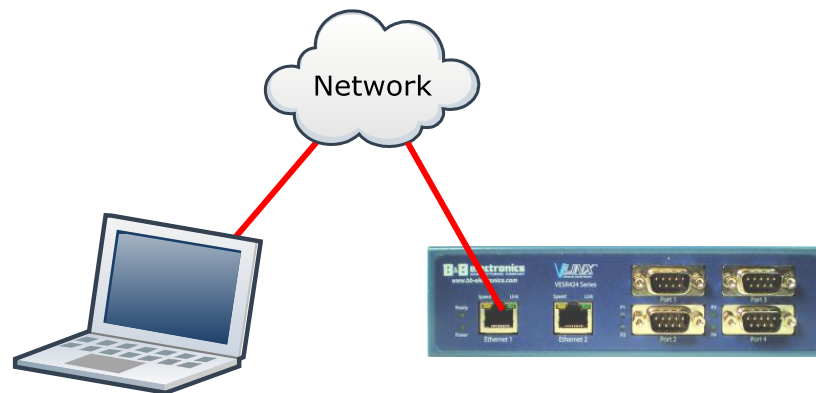


Figure 16. Network Setup

Configuring via the network using a Browser

VESR4x4 Serial Servers can also be configured over the network using a standard internet browser such as Internet Explorer or Firefox running on a networked PC. To do so you must know the IP address of the serial server. Your serial server comes from the factory pre-configured to receive an IP address from a DHCP Server. If a DHCP server is not available, it will default to 169.254.102.39.

Note: For more information on how to use Vlinx Manager to configure your serial server, refer to Section 4: *Configuring the Serial Server*

Configuring via a Serial Port using Vlinx Manager (Console Mode)

Your serial server can be configured via any serial port, using Vlinx Manager. To use this feature a serial port on the serial server must be connected to the serial port of a PC (using a null modem cable).

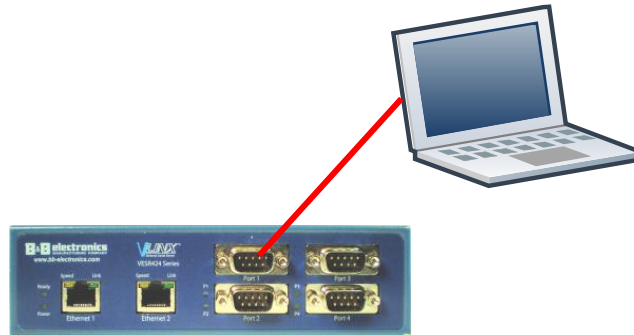


Figure 17. Console Mode Setup

To configure the serial server, it must be put into Console Mode, using the Reset switch.

Note: Refer to Section 2 for information on how to use the Reset switch to enter Console Mode.

VESR4x4 Serial Server Operational Connections

VESR4x4 Serial Servers can operate in Direct IP, Virtual COM Port and Paired Modes.

In **Direct IP Mode** applications can use TCP/IP socket connections or UDP/IP datagrams to communicate with the COM ports on the serial server. In this type of application, the serial server is configured as a TCP or UDP server. The socket program running on the PC establishes a communication connection with the serial server. The data is sent directly to and from the serial port on the server.

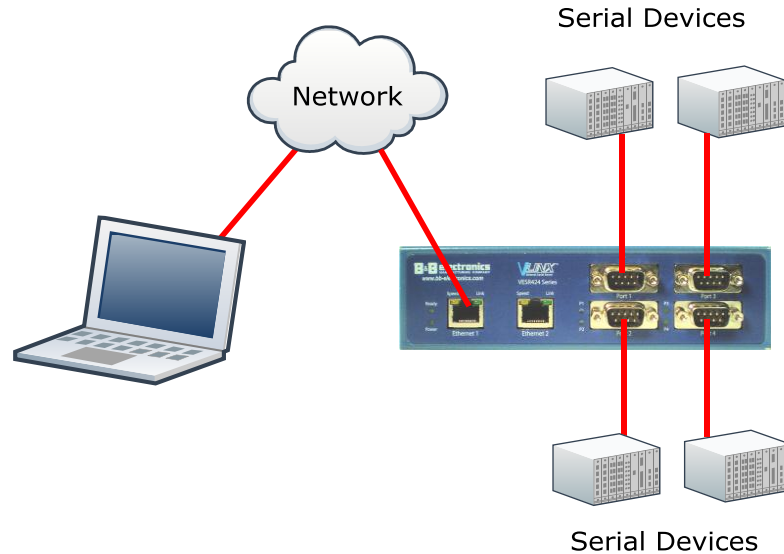


Figure 18. Direct IP and Virtual COM Port Connection

In **Virtual COM Port Mode** the serial ports on the serial server appear to applications running on the host PC as if the serial ports were physically located on the host PC. When a virtual COM port is configured on the PC (using Vlinx Manager), a new COM port appears in the Device Manager. Windows programs are able to interface to the virtual COM port using standard Windows API calls. When a program on the PC opens the new COM port, it communicates directly with the remote serial device connected to the serial server.

In **Paired Mode**, two serial servers are used to provide a virtual cable connection between two remote serial devices using the Ethernet network. The end serial devices communicate data and handshake information directly, as if they were physically connected in a point-to-point serial connection. Paired Mode devices are set up as shown in the following diagram and configured using Vlinx Manager Software or web interface.

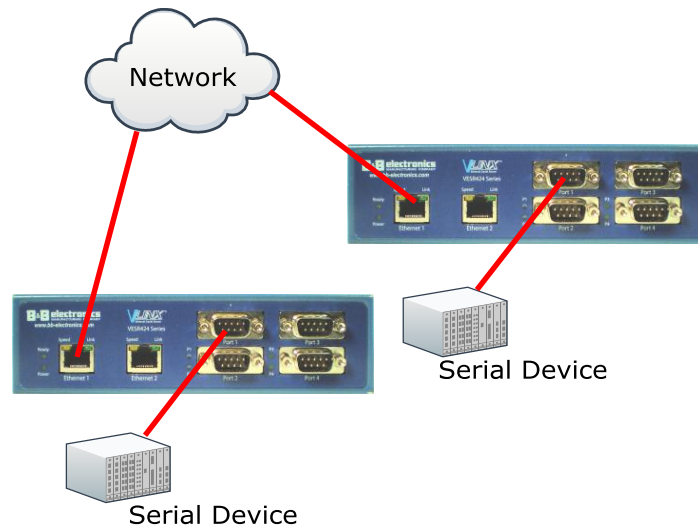


Figure 19. Paired Mode Setup

Installing and Starting Vlinx Manager

Vlinx Manager is a Windows-based application used to configure serial servers. Install it on your PC from the included CD. Installation should launch automatically when the CD is placed in the CD-ROM drive.

Follow the prompts to install the software.

Once the program is installed, go to the Start > Programs menu and run the program.

The Vlinx Manager Discovery window appears.

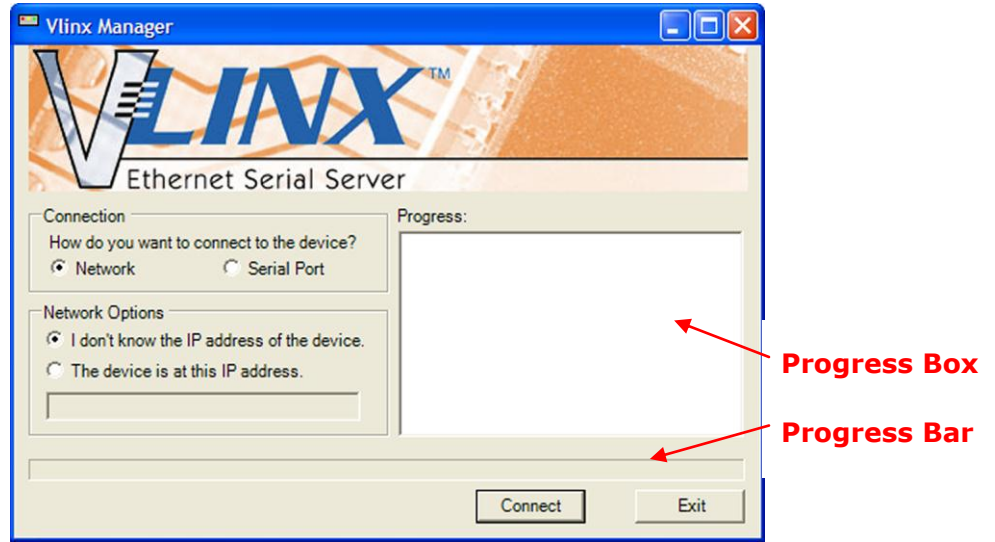


Figure 20. Discovery Window

Discovering Serial Servers

If you are configuring the serial server via the network, select **Network**; if you are configuring it via the serial port, select **Serial Port**.

If you already know the IP address of the serial server, click **The device is at this IP address**; if not, leave **I don't know the IP address of the device** selected.

Click **Connect**. The Progress text box and bar graph provide information to indicate whether serial servers are detected and how far along the process is.

The text in the Progress box appears in various colors, depending on the message type.

Color	Description
Black	A step in the discovery process.
Dark Blue	A device was not found.
Dark Green	A device was found.
Dark Red	An error occurred.

If one or more devices are found, the discovery window closes automatically and the Configuration window appears.

SECTION 4

Configuring the Serial Server

Overview of the Vlinx Manager

The Vlinx Manager configuration window includes three areas:

- Icons
- Serial Server Information Table
- Configuration pane

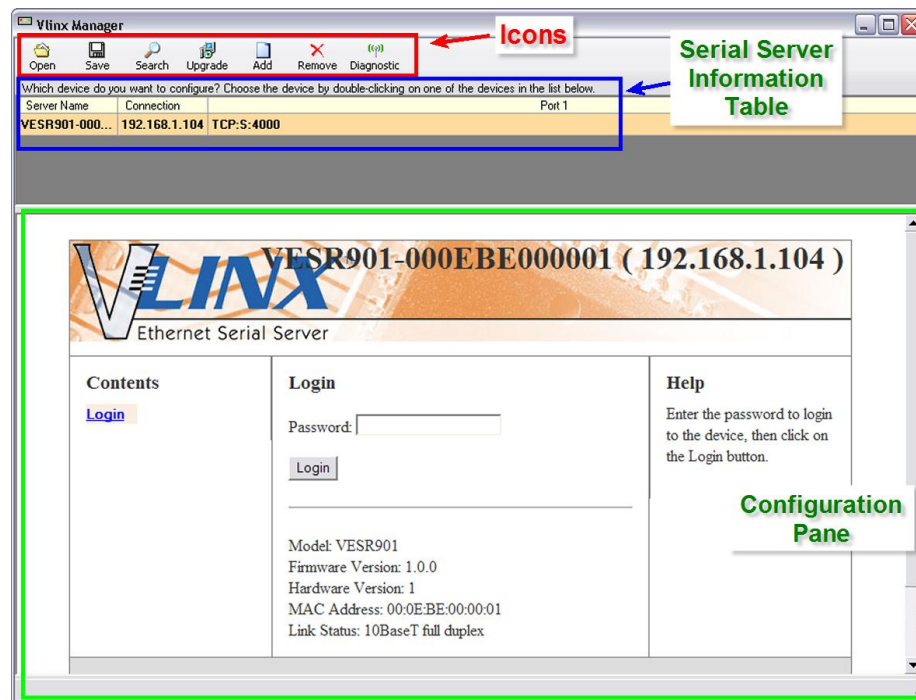


Figure 21. Vlinx Manager Configuration Window

Note: The screen shots shown in this manual refer to the VESR901. Your screen will display the model name/number and serial number of your VESR4x4 device. All menus, functions and options shown on the screen shots in this manual apply to your VESR4x4 device.

Icons



Figure 22. Configuration Window Icons

- **Open** - Open a serial server configuration file.
- **Save** - Save the current serial server configuration to a file.
- **Search** - Initiate a search for serial servers.
- **Upgrade** - Upgrade the firmware in a serial server (see Section 49)
- **Add** - Add a Virtual COM Port to the host PC (see Section 47)
- **Remove** - Remove a Virtual COM Port from the host PC (see to Section 48)
- **Diagnostic** - Perform serial server diagnostics (see Section 51)

Serial Server Information Table

The serial server information table contains information about all serial servers that have been discovered on the network or serial ports.

Which device do you want to configure? Choose the device by double-clicking on one of the devices in the list below.

Server Name	Connection	Port 1	Port 2	Port 3	Port 4
VESR901	169.254.0.41	TCP:S:4000=COM5, in use			
VESR902T	169.254.0.42	TCP:C:4000, in use	UDP:4001		
VESR904	192.168.0.43	TCP:S:4000=COM8	TCP:S:4001	TCP:C:4002	UDP:

Figure 23. Serial Server Information Table

The table displays the following information for each serial server:

- **Server Name** - the name reported by the serial server
- **Connection** - the IP address of the serial server
- **Port 1, Port 2, Port 3** and **Port 4**
 - Communications protocol assigned to the serial port (TCP, UDP, or Paired mode)
 - Whether the port initiates connections, (Client mode) or accepts connections (Server mode)
 - TCP port number or UDP port number
 - The virtual COM port assignment on the local PC (if assigned)
 - Whether the serial server's serial port is being used by anyone on the network

The status of whether the serial server is in use is updated periodically.

When a serial server's IP address is configured for a network that is not within the local network's range, the serial server's information is displayed in a different color (yellow)

Configuration Pane

The configuration pane is essentially a web browser.

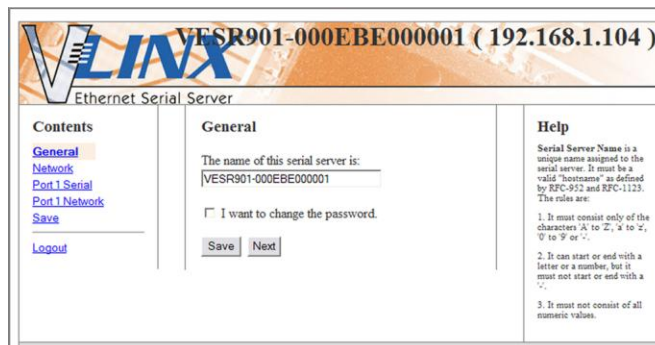


Figure 24. Configuration Pane

It includes the following:

- **Masthead** with the name and IP address of the currently selected serial server
- **Contents** sidebar (on the left side) containing hyperlinks to the following configuration pages:
 - **General**
 - **Network**
 - **Port x Serial** (x = port number; each serial port connection is represented by a hyperlink)
 - **Port x Network** (x = port number; each serial port connection is represented by a hyperlink)
 - **Save**
 - **Login/Logout**
- **Configuration** settings area in the middle of the pane where you can select the settings desired for operation of the serial server
- **Help** sidebar (on the right side) containing helpful descriptions, explanation and suggestions for configuring the serial server

Logging In

You can log in to any serial server listed in the Server Information Table.

To log in:

1. Select the row associated with the desired serial server. The **Login** page appears.
2. Type the password into the **Password** box. The default password is blank.

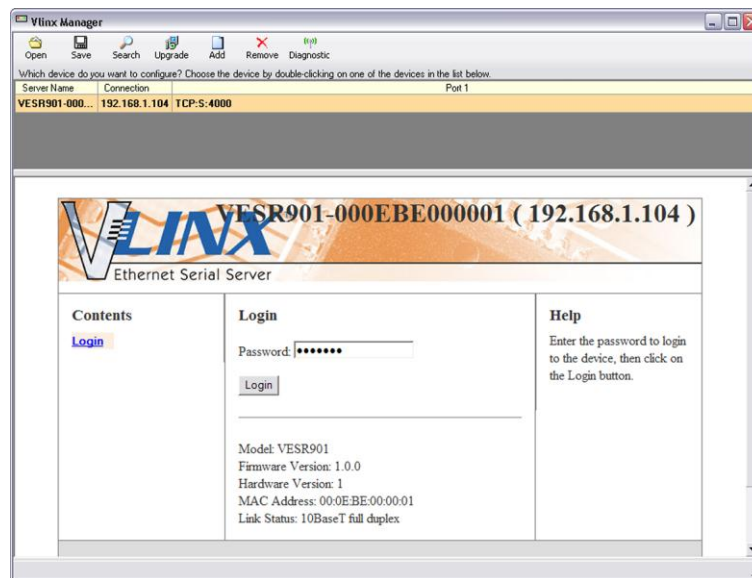


Figure 25. Login Page

3. Click **Login**.

The **General Configuration** page appears.

Navigating the Configuration Pages

There are two ways to move from page to page in the Vlinx Manager Software: by clicking a specific link, or by clicking **Next** or **Back** to move through the pages sequentially.

Note: Always remember to click **Save** before leaving a page to ensure your settings are saved.

Setting up the Serial Server Name and Password

On the **General Configuration** page you can do the following:

- Change the name of the serial server
- Initiate a login password change

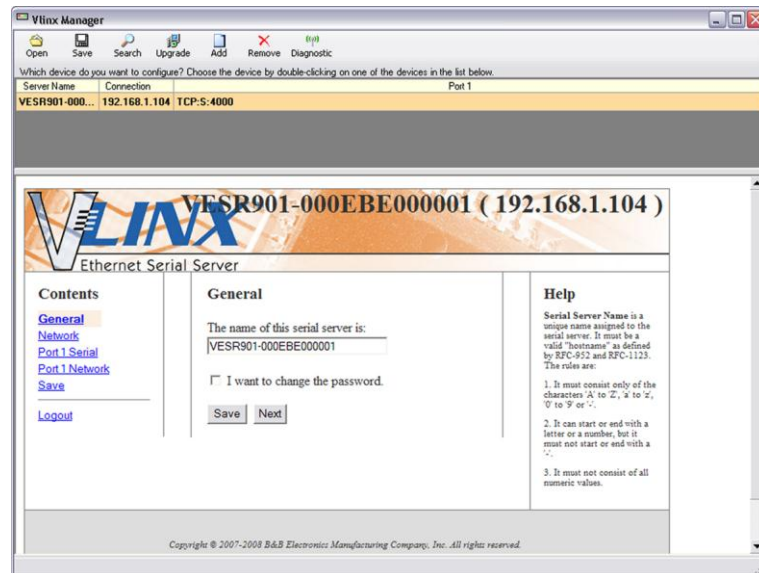


Figure 26. General Configuration Page

Changing the serial server's name:

1. Type the new name into the **Serial Server Name** text box.
2. Click **Save**.

Changing the password:

1. Select the **I want to change the password** check box.
Two text boxes appear.

Type the new password:

Type the new password again to confirm it:

Figure 27. Changing the Password

2. Type the new password into both boxes

3. Click **Save**.

Setting up IP Addressing

On the **Network Configuration** page you can configure the serial server to use dynamic (DHCP) or static IP addressing on the network.

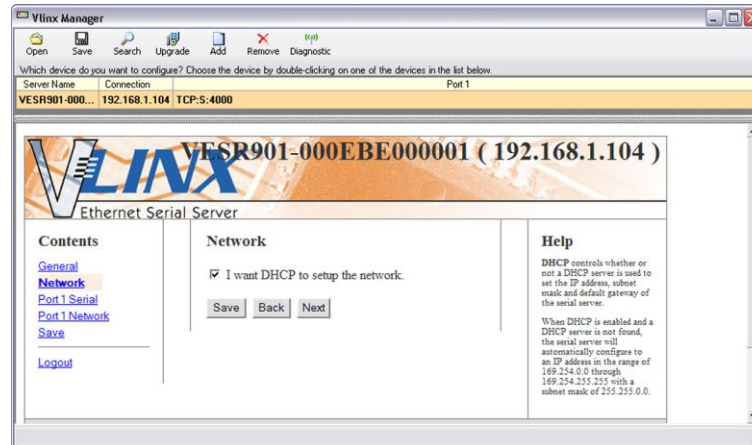


Figure 28. Network Configuration Page

Setting up Dynamic IP Addressing

1. Select the **I want to use DHCP to setup the network** check box.

Setting up Static IP Addressing

1. Ensure the **I want to use DHCP to setup the network** box is un-checked.

Network

I want DHCP to setup the network.

IP Address:

Subnet Mask:

Default Gateway:

Figure 29. IP Address Settings

2. Type the **IP Address**, **Subnet Mask** and **Default Gateway** addresses in the appropriate boxes.

Setting up Serial Ports

On the **Serial Port Configuration** page you can configure the communications parameters of the current serial port. Parameters include the port mode, baud rate, data bits, parity, stop bits and type of flow control.

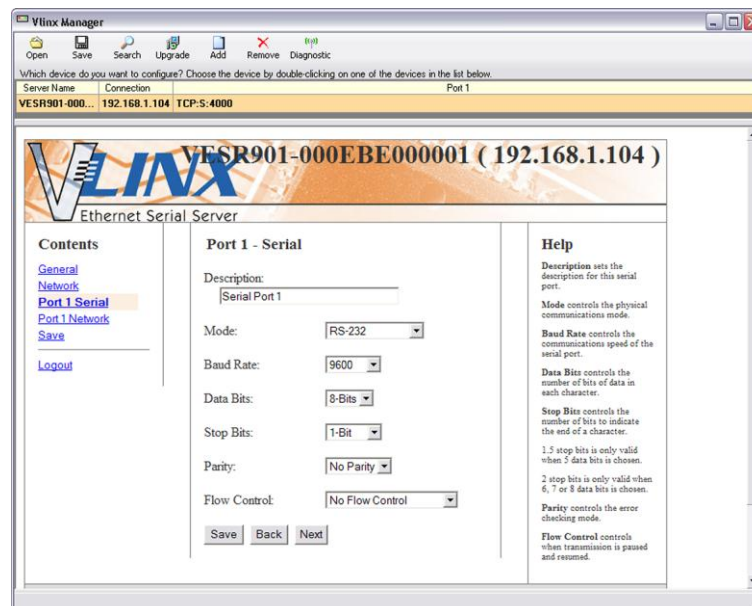


Figure 30. Serial Port Configuration Page

1. **Mode** - select the type of serial connection (RS-232, RS-422, RS-485 2-wire or RS-485 4-wire) required by the serial device.
2. **Baud Rate** - select the Baud Rate (between 75 baud and 230,400 baud) required to communicate with the serial device.
3. **Data Bits** - select the number of Data Bits (5, 6, 7 or 8) required to communicate with the serial device.
4. **Stop Bits** - select the number of Stop Bits (1, 1.5, or 2) required to communicate with the serial device.
5. **Parity** - select the Parity setting (None, Even, Odd, Mark or Space) required to communicate with the serial device.
6. **Flow Control** - select the Flow Control setting (None, RTS/CTS or XON/XOFF) required to communicate with the serial device.

Setting up Port Network Parameters

On the **Port Network Parameters Configuration** page you can configure the port to use UDP, TCP, VCOM or Paired protocols in several different modes.

TCP Configuration

TCP (Transmission Control Protocol) provides reliable connection-oriented network communication with error checking. In TCP mode the serial server can be configured as a client or a server.

When you configure the serial server as a **TCP client** it initiates a connection with a remote server on the network. You must set up the IP address and port number of the remote server that you want the client (serial server) to communicate with. You also select whether you want the serial server to connect at power up or only when it receives data from the device connected to its serial port.

When the serial server is configured as a **TCP server** it waits for an incoming connection request from another network device. You must set up the TCP port number that the serial server will listen to for incoming connections and set the maximum number of simultaneous connections it will support (up to four). You can also set up the serial server to accept incoming connection requests only from certain IP addresses or ranges of IP addresses.

Figure 31. TCP Configuration

Setting the serial server to operate as a TCP Client

1. Select **TCP** protocol.
2. Select **to initiate connections (client)**
3. Type the IP address into the **I want to connect to IP address:** box

4. Type the TCP port number of the server into the **on TCP port number:** box.
5. Select:
 - **at power up** - if you want the serial server to always be connected
 - **when the serial port receives data** - if you only want to establish a connection when there is data to be sent.

Setting the serial server to operate as a TCP Server

1. Select **TCP** protocol.
2. Select **to wait for connections (server)**.

The configuration options change. The server IP address box disappears and the **number of connections** box appears.

3. Type the port number in the **I want to wait for connection on TCP port number:** box.
4. Select the maximum number of connections desired in the **and limit the number of connections to:** drop down box.

Figure 32. TCP Server Settings

UDP Configuration

UDP (User Datagram Protocol) enables applications using UDP socket programs to communicate with the serial ports on the serial server. UDP protocol provides connectionless communications, which allows data to be broadcast to and received from multiple nodes on a network.

In UDP mode, if you want to control which network node receives data, you must specify the IP address and UDP port the data will be sent to. You can choose to send to:

- Nobody (Port only in receive mode)
- All nodes at a specific UDP port number. (This is a broadcast message.)
- Specific IP addresses and UDP port numbers. (This is a unicast message.)
- A range of IP addresses and UDP port numbers. (This is a unicast range.)

You can also configure the serial server to receive from nodes on the network using a similar list of configuration options.

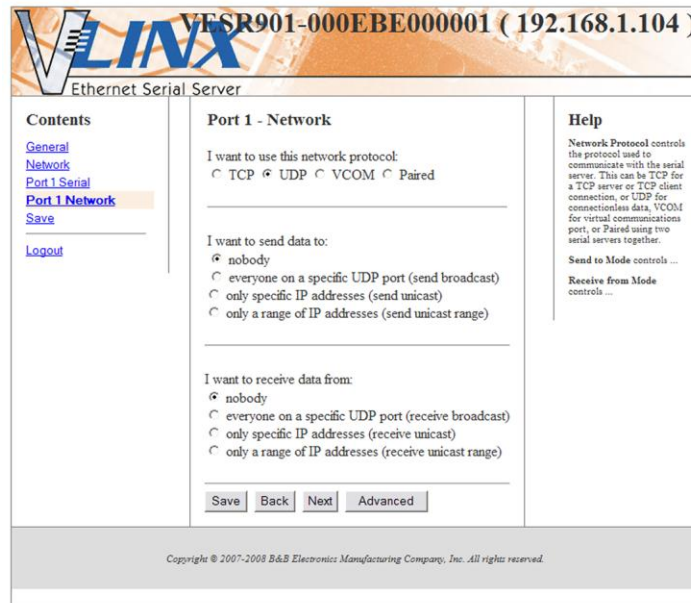


Figure 33. UDP Configuration

Setting the serial server to use UDP

1. Select **UDP** protocol.

Options are provided for sending and receiving data to and from:

- Nobody (one-way communication only)
- Everyone on a specific UDP Port
- Only specific IP addresses
- Only a range of IP addresses

Additional configuration fields appear depending on the options chosen.

2. Select the required **Send** options:
 - a. **nobody** - sends to nobody
 - b. **everyone on a specific UDP port (send broadcast)** - sends to all UDP ports on the network (specified later)
 - c. **only specific IP addresses (send unicast)** - sends to specific network IP addresses (specified later)
 - d. **only a range of IP addresses (send unicast range)** - sends to all IP addresses within a specified range (specified later)
3. Configure the **Send IP addresses and port numbers**:

- If you selected: **everyone on a specific UDP port (send broadcast)**, type the UDP port number into the **This is the UDP port I want to send data to:** box
 - If you selected: only **specific IP addresses (send unicast)**, type the IP addresses and port numbers into the **These are the IP addresses I want to send data to:** text boxes
 - If you selected: **only a range of IP addresses (send unicast range)**, type the ranges of IP addresses and port numbers into the **These are the IP addresses I want to send data to:** text boxes
4. Select the required **Receive** options:
- a. **nobody** - receives from nobody
 - b. **everyone on a specific UDP port (receive broadcast)** - receives from all UDP ports on the network (specified later)
 - c. **only specific IP addresses (receive unicast)** - receives from specific network IP addresses (specified later)
 - d. **only a range of IP addresses (receive unicast range)** - receives from all IP addresses within a specified range (specified later)
5. Configure the **Receive IP addresses and port numbers**:
- If you selected: **everyone on a specific UDP port (receive broadcast)**, type the UDP port number into the **This is the UDP port I want to receive data from:** box
 - If you selected: **only specific IP addresses (receive unicast)**, type the IP addresses and port numbers into the **These are the IP addresses I want to receive data from:** text boxes
 - If you selected: **only a range of IP addresses (receive unicast range)**, type the ranges of IP addresses and port numbers into the **These are the IP addresses I want to receive data from:** text boxes
6. Click **Save**

Setting up Virtual COM (VCOM) Operation

When the Network Protocol is set to **VCOM (Virtual COM Port)** the serial server communicates over the network with a PC, acting as a remote COM port for the computer.

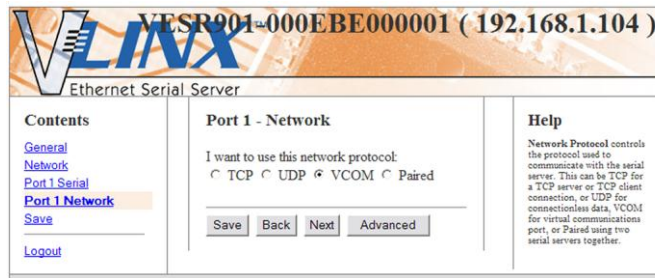


Figure 34. VCOM Configuration

Note: Both the serial server and the computer must be configured for VCOM operation. To set up a virtual COM port on the computer, refer to the section on Adding Virtual COM Ports (see page 47).

1. To enable VCOM operation, select **VCOM** protocol.
2. Click **Save**

Setting up Paired Mode Operation

Paired Mode enables two serial servers to operate across the network like a "wire replacement" between two serial devices. (Paired Mode is also called *serial tunneling*.) Serial devices connected to serial servers on each end of the link can communicate as if they were connected by a serial cable.

For Paired Mode to work one serial server must be configured "**to initiate connections (client)**" and the other must be configured "**to wait for connections (server)**"

The serial server configured as the **client** initiates the connection. You must set up the IP address and port number of the server that you want the client (serial server) to communicate with. You also select whether you want the serial server to connect at power up or only when it receives data from the device connected to its serial port.

The serial server configured as a **server** waits for a connection to be initiated by the remote client. You must set up the TCP port number on which it will listen for connections and set the maximum (up to four) number of simultaneous connections it will accept. The maximum number of connections should be set to at least two (2) to allow the unit to recover if the connection is terminated abnormally. You can filter the connections it will accept based on specific IP addresses or ranges of IP addresses that you specify.

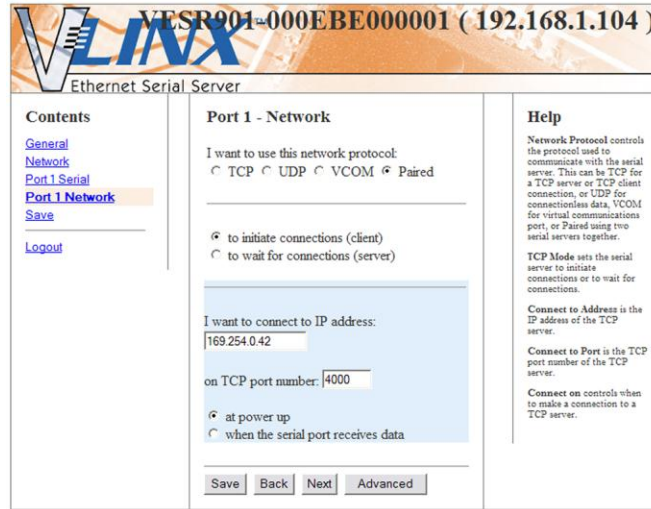


Figure 35. Paired Mode Configuration

Setting the serial server to operate in Paired Mode as a client

1. Select **Paired** protocol.
2. Select **to initiate connections (client)**
3. Type the IP address and TCP port numbers of the server in the appropriate text boxes.
4. Select:
 - **at power up** - if you want the serial server to always be connected
 - **when the serial port receives data** - if you only want to establish a connection when there is data to be sent.

Setting the serial server to operate in Paired Mode as a server

1. Select **Paired** protocol.
2. Select **to wait for connections (server)**.

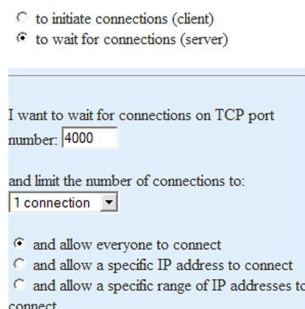


Figure 36. Paired Mode Settings

3. Type the TCP port number to be used in the **I want to wait for connections on TCP port number** box.
4. Select the number of connections in the **and limit the number of connections to** drop down box.
5. Select:
 - **and allow everyone to connect** - if you want any server to connect
 - **and allow a specific IP address to connect** - if you want to specify up to four IP addresses to be able to connect
 - **and allow a specific range of IP addresses to connect** - if you want to specify a range of IP addresses that can connect
6. If you selected
 - **and allow a specific IP address to connect**, in the area of the window that appears, select one or more IP address boxes and type in the desired IP address

Figure 37. IP Addresses

- **and allow a specific range of IP addresses to connect**, in the area of the window that appears, select an IP address box and type in the IP addresses that specify the desired range

Figure 38. IP Address Ranges

Setting up Advanced Network Settings

On the **Advanced Network Settings** window you can configure if network connections are automatically closed due to inactivity and when serial data is forwarded to the network.

Data that is received by the serial port is normally buffered for a short period of time and then forwarded over the Ethernet to the remote device. The VESR4x4 automatically optimizes the data buffering to reduce the network overhead and minimize the data transmission latency. For most applications the VESR will transmit data back and forth seamlessly between the end devices. However, certain applications may require additional control over this process. In these cases, the Advanced Port Settings can be used to fine tune the serial server performance.

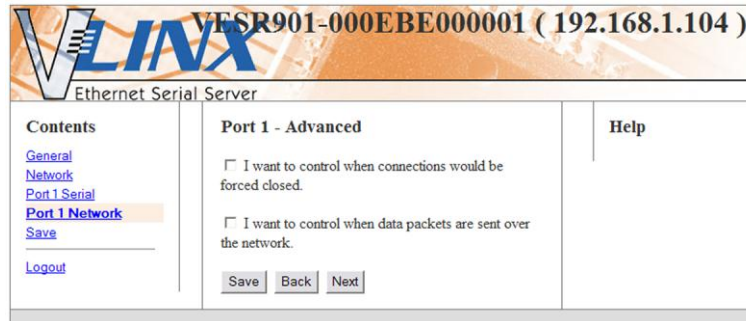


Figure 39. Advanced Network Settings Window with nothing selected

Configuring when network connections will be forced closed

1. Select the **I want to control when connections would be forced closed** checkbox.

The **Network Watchdog** and **Serial Watchdog** configuration boxes appear.

Figure 40. Advanced Configuration - Forcing Connections Closed

To close a network connection if no data is received from the network for a period of time

1. Select the **I want to close a connection when data is not received on that connection for a period of time** checkbox
2. Type the desired time period (in seconds) into the text box.

To close a connection if no data is received by the serial port for a period of time

1. Select the **I want to close all connections when data is not received by the serial port for a period of time** checkbox.
2. Type the desired time period (in milliseconds) into the text box.

Configuring when data packets are sent

1. Select the **I want to control when data packets are sent over the network** checkbox.

The **Character Count**, **Forced Transmit**, **Intercharacter Timeout**, **Delimiter 1**, **Delimiter 2** and **Delimiter Removal** configuration boxes appear.

VESR901-000EBE000001 (192.168.1.104)

Vlinx Ethernet Serial Server

Contents

- [General](#)
- [Network](#)
- [Port 1 Serial](#)
- [Port 1 Network](#)**
- [Save](#)
- [Logout](#)

Port 1 - Advanced

I want to control when connections would be forced closed.

I want to control when data packets are sent over the network.

Character Count

I want to wait for a specific amount of data to be received by the serial port before sending it.

characters

Forced Transmit

I want to wait no longer than a specific amount of time after data is received before sending it.

milliseconds

Intercharacter Timeout

I want to send data immediately when no more characters are received for.

milliseconds

Delimiter 1

I want to send data immediately when a specific character is received by the serial port.

ASCII value for character

Delimiter 2

I want to send data immediately when another specific character is received by the serial port.

ASCII value for character

Delimiter Removal

I want to remove the delimiter characters from the data before sending the data.

Help

Character Count controls the maximum number of characters to buffer before sending the characters to the network. Larger values will decrease the number of network packets, but will increase the amount of time to receive characters. Smaller values will increase the number of network packets, but will decrease the amount of time to receive characters. The range is 1 through 65535.

Forced Transmit controls the maximum amount of time that characters can be buffered before sending the characters to the network. Larger values will decrease the number of network packets, but will increase the amount of time to receive characters. Smaller values will increase the number of network packets, but will decrease the amount of time to receive characters. The range is 1 through 65535.

Intercharacter Timeout controls the maximum duration between received characters before sending the characters to the network. Larger values may decrease the number of network packets, but will increase the amount of time to receive characters. Smaller values may increase the number of network packets, but will decrease the amount of time to receive characters. The range is 1 through 65535.

Delimiter 1 controls sending of received characters to the network. When this character is received, the data is sent to the network. The range is 0 through 255.

Delimiter 2 controls sending of received characters to the network. When this character is received, the data is sent to the network. The range is 0 through 255.

Delimiter Removal controls removing of Delimiter 1 and Delimiter 2 from the received characters before the received characters are sent to the network.

Figure 41. Advanced Configuration - Configuring when data packets are sent

To wait until a specific amount of data is received on the serial port before sending it across the network

1. Select: **I want to wait for a specific amount of data to be received by the serial port before sending it** in the **Character Count** box
2. Type the desired number of characters into the text box.

To force the serial server to send all buffered data received on the serial port within a specified length of time

1. Select: **I want to wait no longer than a specific amount of time after data is received before sending it** in the **Forced Transmit** box

2. Type the desired time period (in milliseconds) into the text box.

To force the serial server to send buffered data if another character is not received within a certain period of time

1. Select: **I want to send data immediately when no more characters are received for** in the **Intercharacter Timeout** box.
2. Type the desired time period (in milliseconds) into the text box.

To force the serial server to start buffering data only when it receives a specified ASCII character on its serial port

1. Select: **I want to send data immediately when a specific character is received by the serial port** in the **Delimiter 1** box.
2. Type the decimal value for the ASCII character into the text box. For instance, if you want to send data when a '\$' is received, enter '36' into the test box.

Note: If Delimiter 1 is selected, Delimiter 2 must also be used.

To force the serial server to send its buffered data when it receives a specified ASCII character on its serial port

1. Select: **I want to send data immediately when another specific character is received by the serial port** in the **Delimiter 2** box.
2. Type the decimal value for the ASCII character into the text box. For instance, if you want to send data when a '\$' is received, enter '36' into the test box.

To force the serial server to remove the delimiter characters from the received data when it sends it on to the Ethernet network

1. Select: **I want to remove the delimiter characters from the data before sending the data.**

Saving/Restoring the Configuration Settings

When all configuration windows are complete the **Save Configuration** page appears.

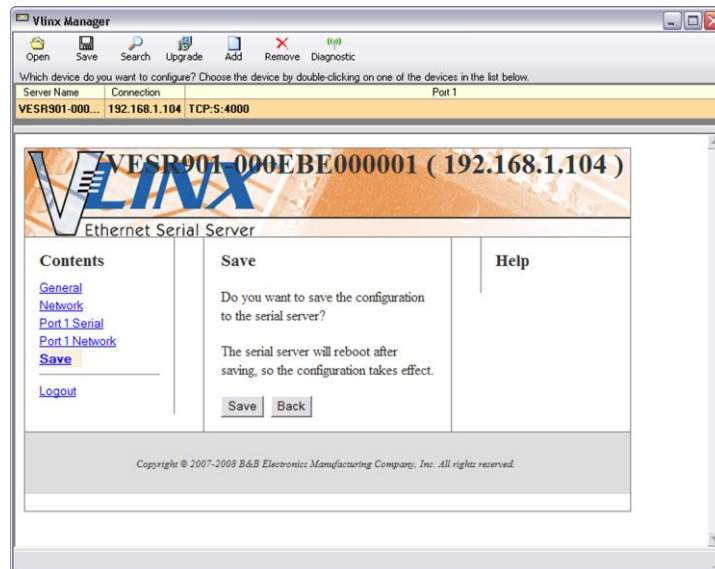


Figure 42. Save Configuration Page

To save the configuration to the serial server, and re-boot it so that the configuration settings will take effect

1. Click **Save**.

Adding Virtual COM Ports

Clicking the **Add** icon (located at the top of the Vlinx Manager Configuration window) opens the **Add Virtual COM Port** dialog box.

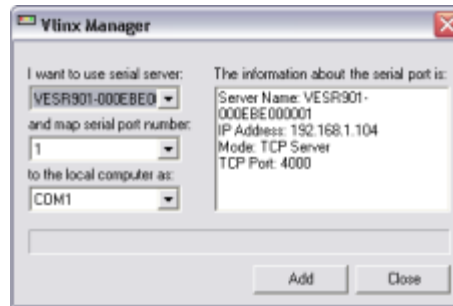


Figure 43. Add Virtual COM Port Dialog Box

Using the drop down boxes you can select the serial server you want to map the virtual COM port to, the number of the serial port on the serial server and the COM port on the local computer. The information box displays the server name, its IP address, operating mode and TCP port.

1. On the **Vlinx Manager** window, click the **Add** icon.

The **Add Virtual COM Port** dialog box appears.

2. Select the serial server to which you want to map the virtual COM port.
3. Select the serial port number on the serial server.
4. Select the COM port number you want to use on the local computer.
5. Click the **Add** button.

When the process of adding the virtual COM port is complete (indicated by the progress bar), the **Serial port is successfully installed** dialog box appears.

6. Click **OK**

Removing Virtual COM Ports

Clicking the **Remove** icon (located at the top of the Vlinx Manager Configuration window) opens the **Remove Virtual COM Port** dialog box.

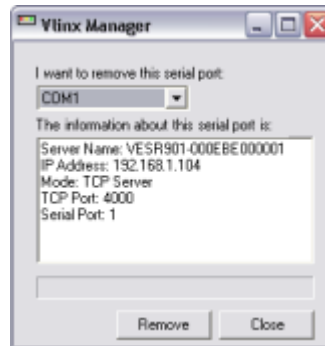


Figure 44. Remove Virtual COM Port Dialog Box

Using the drop down box you can select the virtual COM port on the local computer. The information box displays the server name, its IP address, operating mode and TCP port.

1. Click the **Remove** icon.

The **Remove Virtual COM Port** dialog box appears.

2. Select the COM port number you want to remove from the local computer.
3. Click the **Remove** button.

When the process of removing the virtual COM port is complete (indicated by the progress bar), the **Serial port is successfully deleted** dialog box appears.

4. Click **OK**

SECTION 5

Upgrading the Serial Server Firmware

Occasionally, updated firmware may become available for your serial server. The firmware can be upgraded using the Vlinx Manager Software. The following procedure describes the firmware updating process:

1. Click the **Upgrade** button to open the **Firmware Upgrade** window.

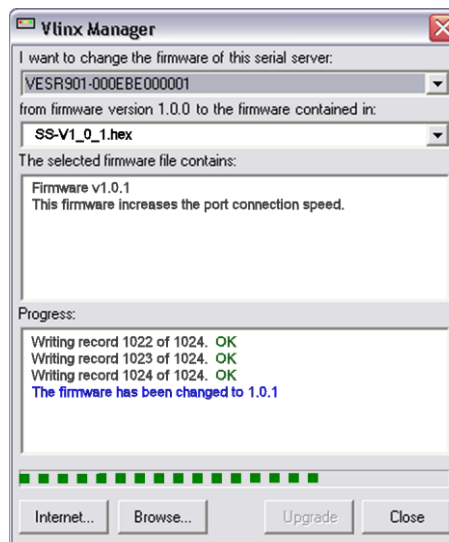


Figure 45. Firmware Upgrade Dialog Box

The name of the currently selected serial server appears in the top drop down list. Other serial servers (that have already been discovered) can be selected from the drop down list, if desired.

The current firmware version of the selected serial server is shown in the text below the serial server name.

Information about the selected firmware file is shown in the third text box.

Downloading Firmware Files

The **Firmware File** list (second box) displays all firmware files in the firmware installation folder. Only firmware that is compatible with the selected serial server is available in this list.

To download the latest firmware files from an FTP site on the Internet

1. Click the **Internet** button at the bottom of the window.

The Vlinx Manager connects to an FTP server on the Internet.

2. Click the **Check for Updates** button.

Progress Bar and **Progress Box** display information about and progress of the download.

To download the latest firmware files from a file

1. Click the **Browse** button to open an **Open File** dialog box.
2. Browse to the drive and folder containing the firmware file.
3. Select and download the file to the local firmware folder.

Uploading the Firmware to the Serial Server

1. In the **Serial Server Selection** drop down list, select the serial server to be upgraded.
2. In the **Firmware Description** drop down list, select the firmware to upload to the serial server.
3. Click the **Upgrade** button.

Progress Bar and **Progress Box** provides information on the progress of the transfer.

4. In the **Firmware File** drop down list, select the firmware file to upload to the serial server.
5. Click **Upgrade**.

The Progress box and Progress bar display information on the upgrading process.

6. When the upgrade process is complete, click **Close**.

SECTION 6

Diagnostics

Clicking the **Diagnostics** icon opens the **Diagnostics** dialog box and enables you to check the operation of connected serial servers and VCOM ports on the local computer.

The **Computer Information** box displays information about the type of network connections, the IP addresses, Subnet Masks and Default Gateways in use.

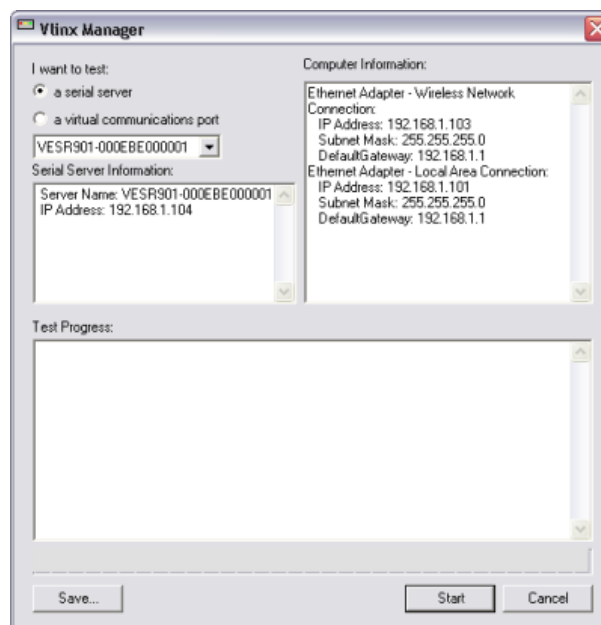


Figure 46. Diagnostics Dialog Box

Testing a Serial Server Connection

1. Click the **Diagnostics** icon.
The **Diagnostics** dialog box appears.
2. Select the option: **a serial server**
3. In the drop down box select the specific serial server you want to check.
4. Click the **Start** button

Information about the progress of the pinging process is displayed in the **Test Progress** box.

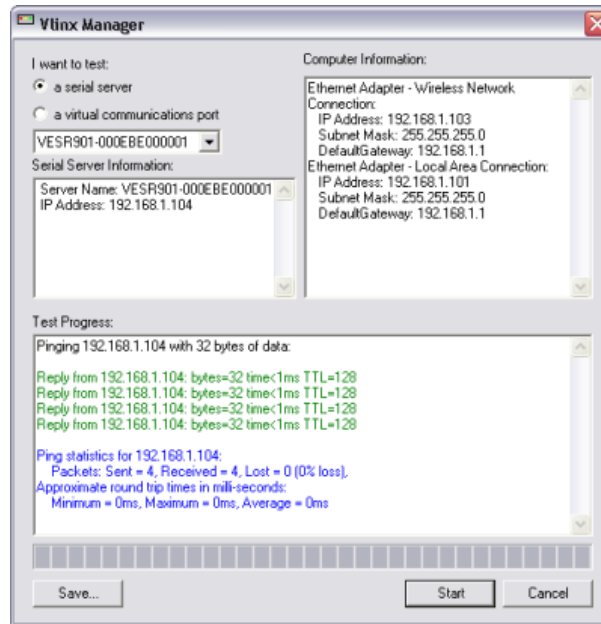


Figure 47. Testing a Serial Server Connection

Testing a Virtual COM Port

1. Click the **Diagnostics** icon.
The **Diagnostics** dialog box appears.
2. Select the option: **a virtual communications port**
3. In the drop down box select the specific COM port you want to check.
4. Click the **Start** button

Information about the progress of the pinging process is displayed in the **Test Progress** box.

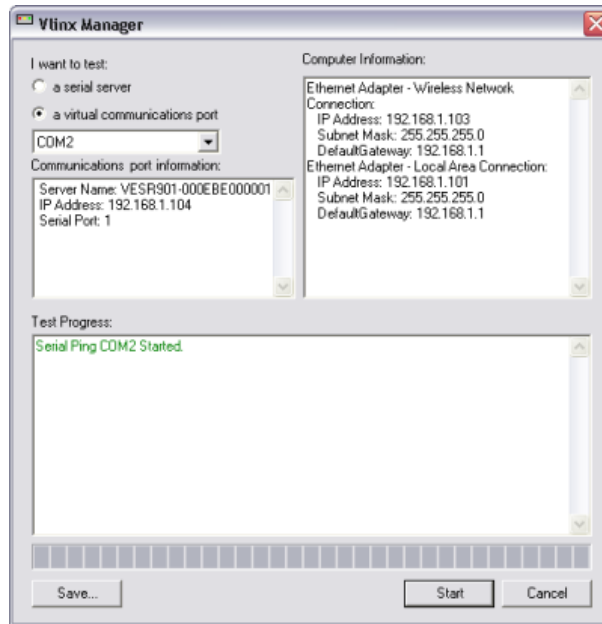


Figure 48. Testing a VCOM Port

SECTION 7

Listing/Descriptions of Serial Server Settings

The following serial server properties are ordered alphabetically to assist you in finding the information you need.

Baud Rate is the communication speed of the link between the serial server and the device attached to its serial port. Both devices must be configured to operate at the same baud rate. Baud rate values range from 75 to 230,400 Baud. (Refer to Appendix B for specific baud rates that are supported.)

Character Count controls the maximum number of characters to buffer before sending the characters to the network. Larger values decrease the number of network packets, but increase the amount of time to receive characters. Smaller values increase the number of network packets, but decrease the amount of time to receive characters. The range is 1 through 65535.

Configuration files contain all of the configuration settings for the serial server. When the serial server settings have been configured you can save the settings using Vlinux Manager. Existing configuration files can be Opened (from Vlinux Manager), which loads them into the serial server. This allows the same configuration to be applied to multiple serial servers, or to reload a previously used configuration.

Data/Parity/Stop Bits. The number of Data bits, type of Parity and number of Stop bits selected define the serial port parameters at which the serial server will operate. These parameters must be configured to match the parameters set on the serial device connected to the serial server's serial port.

- **Data Bits** controls the number of bits of data in each character. Options include 5, 6, 7 or 8 data bits.
- **Parity** controls the error checking mode. Options are No Parity, Odd, Even, Mark or Space.
- **Stop Bits** controls the number of bits to indicate the end of a character. Options include 1, 1.5 and 2. (1.5 bits is only valid when 5 data bits is selected, which is rare. The 2 stop bits setting is only valid when 6, 7 or 8 data bits is selected.)

The **Default Gateway** address sets the default route to remote networks, enabling users to access the serial server from outside the local network.

Delimiter 1, Delimiter 2 and Delimiter Removal. Delimiters and Delimiter Removal enable you to control how characters received on a serial port are

sent across the network. Delimiters are ASCII characters specified by the user when configuring the serial server. The serial server takes action when it recognizes the specified character(s) on its serial port.

- **Delimiter 1** is a *start delimiter*. The range of ASCII values is 0 through 255.
- **Delimiter 2** is an *end delimiter*. The range of ASCII values is 0 through 255.
- **Delimiter Removal** controls removing of Delimiter 1 and Delimiter 2 from the received characters before the received characters are sent to the network.

How Delimiters Work. When only Delimiter 2 (the end delimiter) is enabled, characters received by the serial port are accumulated in a buffer. When the end delimiter is received on the serial port, the buffered characters, including the end delimiter, are sent to the network. All characters received after the end delimiter are again buffered until another end delimiter is received.

When both Delimiter 1 (start delimiter) and Delimiter 2 (end delimiter) are enabled, characters received by the serial port will be discarded until the start delimiter character is detected on the serial port. The serial server then buffers the start delimiter character and all subsequent characters received after it until the end delimiter is detected. When the end delimiter is received, the buffered characters, including the start and end delimiters, are sent to the network.

When Delimiter Removal is enabled, the serial server removes the delimiter character(s) before sending the other characters across the network.

DHCP (Dynamic Host Configuration Protocol) is a protocol used on special servers that supply IP addresses to network nodes on request.

When DHCP is enabled on the serial server, on power up it sends a DHCP request to the DHCP server, which assigns a dynamic IP address, subnet mask, and default gateway to the serial server.

When DHCP is disabled (static IP addressing), the IP Address, Subnet Mask and Default Gateway fields must be set manually by entering the appropriate addresses in these fields. If you do not know what addresses to use in these fields, ask your network administrator.

Note 1: This product is factory defaulted to the DHCP mode. It is intended that your network's DHCP Server provide the IP address assignment. If there is not a DHCP server on your network, the device will default to IP address **169.254.102.39**.

Note 2: A dynamic address assigned by the DHCP server may change if the server loses the Ethernet connection or power is removed. If a device on the network that normally communicates with the serial server is configured to communicate with a specific IP address of the serial server, and the IP address has been changed, the device will not be able to communicate with the serial server.

The **Firmware Version** number (Vx.x.x) indicates the serial server's currently loaded firmware release. From time to time new firmware is made available and can be uploaded into the serial server using Vlinux Manager.

Flow Control determines the type of handshaking that is used to control sending and receiving of messages. Options include No Flow Control, Hardware Flow Control (RTS/CTS) and Software Flow Control (XON/XOFF). The Flow Control setting must match the requirements of the serial device connected.

Note: Select No Flow Control when setting the port as RS-422 or RS-485 4-wire.

Forced Transmit controls the maximum amount of time that characters can be buffered before sending the characters to the network. Larger values decrease the number of network packets, but increase the amount of time to receive characters. Smaller values increase the number of network packets, but decrease the amount of time to receive characters. The range is 1 through 65535.

The **Hardware Version** number of the serial server hardware is displayed on the Login page of Vlinux Manager.

Inter-character Timeout controls the maximum duration between received characters before sending the characters to the network. Larger values may decrease the number of network packets, but increase the amount of time to receive characters. Smaller values may increase the number of network packets, but decrease the amount of time to receive characters. The range is 1 through 65535.

IP Address. Software or hardware attempting to access the serial server via the network must know the IP Address of the server. In DHCP mode (factory default), the serial server requests and receives a dynamic IP address from a DHCP server when it first connects to the network. If there is not a DHCP Server on your network, this device will automatically default to IP Address **169.254.102.39**. If the serial server is unable to connect to your network using this address, there are two methods to manually configure the IP Address.

1. **Method One:** Change your PC Network to Match the Serial Server
 - a. Open the network connection on your PC

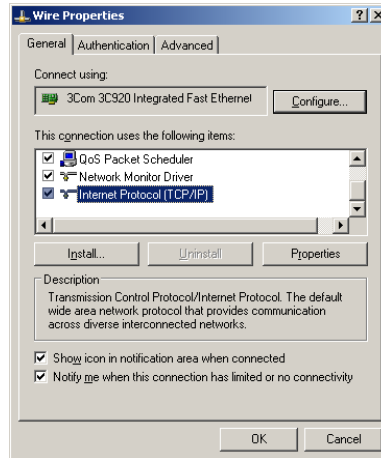


Figure 49. Network IP Properties

- b. Click **Internet Protocol (TCP/IP)** and then click **Properties**. Change the parameters to the following:
 - IP Address = 169.254.102.1
 - Subnet Mask = 255.255.255.0
 - Default Gateway = 169.254.102.100

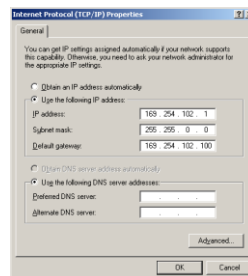


Figure 50. TCP/IP Properties

- c. Use the Vlinx Manager Software to search for, discover, and configure the unit.
2. **Method Two:** Change the serial server's network setting to match your PC using Console Mode
 - a. Connect a null modem serial cable (crossover cable) from any port on the serial server to an available COM port on your PC.
 - b. Open **Vlinx Manager Software** and connect to the COM port used in the previous step. Ensure the port is configured to 115,200 baud, 8 data bits, and 1 stop bit.

- c. Enter Console Mode. Press and hold the serial server's reset switch for 2 to 10 seconds. The LED indicators will respond as follows:

Model	Port 1 LED	Port 2 LED	Port 3 LED	Port 4 LED	Ready LED
1 Port	OFF	N/A	N/A	N/A	ON
2 Port	OFF	ON	N/A	N/A	OFF
4 Port	OFF	ON	OFF	OFF	OFF

- d. Release the Reset button. The Ready LED will flash twice per second for 5 seconds. This indicates that the serial server is re-booting in Console Mode.
- e. When the serial server has successfully restarted in Console Mode, the Ready LED will be off and the Port 1 LED will be on.
- f. Open the Vlinx Manager Software and select Serial Port as the method to connect to the device.
- g. After logging in, click **Network**.
- h. De-select **I want DHCP to setup the Network**.
- i. Re-configure the serial server's network settings to an address within the range of your PC's network setting.

For example, if your PC is configured to the following settings:

IP Address = 192.168.0.1

Network Mask = 255.255.255.0

Default Gateway = 192.168.0.100

Configure the serial server to:

IP Address = 192.168.0.50

Network Mask = 255.255.255.0

Default Gateway = 192.168.0.100

- Save the settings and remove power from the serial server.
- Apply power to the serial server.
- Open the Vlinx™ Manager Software and select "Network" as the method to connect to the serial server

Link Status of the currently selected serial server is shown on the Login page of Vlinx Manager. Link status indicates the type of Ethernet connection between the computer and serial server. It will either display 10BaseT or 100BaseTX in full duplex or half duplex. Link status is dependent on the LAN, switches, hubs used in the LAN topology.

The **MAC Address** is a hardware level address of the serial server that cannot be changed. It is assigned in the factory. Every Ethernet device manufactured has its own unique MAC address. The MAC address of each serial server is printed on the device's label. The MAC address of the currently selected serial server is also displayed on the Login page of Vlinx Manager.

The **Model** number of the currently selected serial server is displayed on the Login page of Vlinx Manager.

Network Protocols available for use on VESR4x4 serial servers include TCP, UDP, VCOM and Paired Mode.

Network Watchdog controls the duration of network inactivity when a network connection is determined idle and causes the connection to be forced closed. The range is 1 through 65535 milliseconds.

Paired Mode enables two serial servers to operate across the network like a "wire replacement" between two serial devices. (Paired Mode is also called *serial tunneling*.) Serial devices connected to serial servers on each end of the link can communicate as if they were connected by a serial cable.

- For Paired Mode to work one serial server must be configured as a TCP server and the other as a TCP client.
- The serial server configured as the **TCP client** initiates connections. You must set up the IP address and port number of the server that you want the client (serial server) to communicate with. You also select whether you want the serial server to connect at power up or only when it receives data from the device connected to its serial port.
- The serial server configured as a **TCP server** waits for connections to be initiated by another network device. You must set up the TCP port number on which it will listen for connections and set the maximum (up to four) number of simultaneous connections it will accept. You can filter the connections it will accept based on specific IP addresses or ranges of IP addresses that you specify.

Password. When you first receive the VESR4x4 serial server from the factory the password is blank so that you can initially access the serial server without entering a value into this field. To ensure security you should create and save a password the first time you configure the serial server. After a password has been set up it must be entered each time you login to Vlinx Manager. The password is used to access the configuration pages from the Vlinx Manager Login page and can be changed from the General page.

Serial Interface Modes. Four serial interface modes of operation are:

- **RS-232** - Point-to-point serial communications connection used by PC COM ports and many other systems. Capable of baud rates up to 115.2

kbaud over short distances (typically 50 feet). Typically uses DB-9 connectors but terminals are also used on VESR4x4 serial servers.

- **RS-422** - Point-to-point communications using a transmit pair and a receive pair. RS-422 can operate at higher speeds and longer distances than RS-232. Typically uses two shielded twisted pairs and screw terminals but DB-9 connectors are also used on VESR4x4 serial servers.
- **RS-485 2-wire** - Similar speed and distance specifications as RS-422 but allows multidrop connections. Typically uses one shielded twisted pair and screw terminals but DB-9 connectors are also used on VESR4x4 serial servers.
- **RS-485 4-wire** - Similar speed and distance specifications as RS-422 but allows full-duplex connections. Typically uses two shielded twisted pairs and screw terminals but DB-9 connectors are also used on VESR4x4 serial servers..

Select the appropriate serial interface mode for the type of connection between the serial server's serial port and the device connected to it.

Note: Refer to the Appendix D for connector and pinout details.

Serial Server Name is a unique name assigned to the serial server. It must be a valid hostname as defined by RFC-952 and RFC-1123. The rules are:

- It must consist only of the characters "A" to "Z", "a" to "z", "0" to "9" or "_"
- It can start or end with a letter or a number, but it must not start or end with a "-".
- It must not consist of all numeric values.

The **Server Serial Port Number** of the currently selected port is shown in this field. For more information refer to the TCP/UDP Ports table in Appendix B, which shows the ports used for several modes of operation.

Serial Watchdog controls the duration of serial inactivity when the serial port is determined idle and causes all connections for that serial port to be forced closed. The range is 1 through 65535 milliseconds.

The **Subnet Mask** specifies the network mask the serial server uses when on a subnetted network.

- For a Class A network (IP addresses 0.0.0.0 through 127.255.255.255) the default subnet mask is 255.0.0.0.
- For a Class B network (IP addresses 128.0.0.0 through 191.255.255.255) the default subnet mask is 255.255.0.0
- For a Class C network (IP addresses 192.0.0.0 through 233.255.255.255) the default subnet mask is 255.255.255.0

- For a Class D network (IP addresses 224.0.0.0 through 239.255.255.255) and Class E Networks (IP addresses 240.0.0.0 through 255.255.255.255) the subnet mask is ignored.
- VESR4x4serial servers come from the factory with a default subnet mask value of: 255.255.255.0

TCP (Transmission Control Protocol) provides reliable connection-oriented network communication with error checking. In TCP mode the serial server can be configured as a client or a server.

TCP client. When the serial server is configured as a TCP client it initiates connections with a server on the network. You must set up the IP address and port number of the server that you want the client (serial server) to communicate with. You also select whether the serial server is to connect at power up or only when it receives data from the device connected to its serial port.

TCP server. When the serial server is configured as a TCP server it waits for connections to be initiated by another network device. You must set up the TCP port number that it will listen to for connections and set the maximum (up to four) number of simultaneous connections it will accept. You can filter the connections it will accept based on specific IP addresses or ranges of IP addresses that you specify.

UDP (User Datagram Protocol) enables applications using UDP socket programs to communicate with the serial ports on the serial server. UDP protocol provides connectionless communications, which allows data to be broadcast to and received from multiple nodes on a network. (Because it is a connectionless protocol UDP does not guarantee the delivery of a datagram and the datagram is only sent once.)

- In UDP mode, if you want to control what network node receives data, you must specify the IP address and UDP port the data will be sent to. You can choose to send to:
 - Nobody
 - All nodes at a specific UDP port number. (This is called broadcast.)
 - Specific IP addresses and UDP port numbers. (This is called unicast.)
 - A range of IP addresses and UDP port numbers. (This is called unicast range.)
- You can also configure the serial server to receive from nodes on the network using the same list of configuration options.

In **VCOM (Virtual COM Port) mode** the serial server communicates over the network with a PC, acting as a remote COM port for the computer.

Both the serial server and the computer must be configured for VCOM operation. Virtual COM ports can be set up on the PC using the Vlinx Manager software.

SECTION 8

Appendix

Appendix A: Default Server Settings

Setting	Default Value
Server Name	MODEL NUMBER
Serial Number	printed on side of unit
Password	password field is blank from factory
DHCP	Enable
IP Address	BASED ON DHCP SERVER If a DHCP assignment is not available, the device will default to 169.254.102.39
Net Mask	255.255.255.0
Gateway	169.254.102.100
MAC Address	Fixed - see bottom label
Firmware Version	X.X.X (Current Version)
Hardware Version	X.X (Current Version)
Port	1, 2, 3, 4
Serial port mode	RS-232
Baud Rate	9600
Data bits	8
Parity	None
Stop bits	1
Flow Control	None
Protocol	TCP
Serial timeout	0 seconds
TCP alive timeout	0 minutes
Connection Mode	Server
Delimiter HEX 1	00
Delimiter HEX 2	00
Remove delimiters	Disable
Force transmit	0 ms
Inter-character timer	0 ms
Character count	0
Max connection	1

Appendix B: Product Specifications

General Specifications

Hardware and included accessories	Device	Serial Server
	CD	CD with Vlinx Manager Software for Windows 2000, XP (32/64 bit), 2003 Server (32/64 bit), Vista (32/64 bit), 2008 Server (32/64 bit), Windows 7 (32/64 bit)
Optional Accessories	Cable	232NM9 Null Modem Crossover Cable for DTE to DTE connection
	Rail	ERS35 one-meter length of steel 35mm DIN Rail
	Mounting Bracket Kit #9030	
Configuration Options	Via serial port	Using Vlinx Manager via a serial connection, (press Reset button to enter Console Mode)
	Via network	Using Vlinx Manager via a Ethernet connection Using a standard web browser such as Internet Explorer 7, 8 or 9 or Firefox 3 or 4
Software	Vlinx Manager for serial server configuration	Windows 2000, XP (32/64 bit), 2003 Server (32/64 bit), Vista (32/64 bit), 2008 Server (32/64 bit), Windows 7 (32/64 bit)
Environment	Operating Temperature	-40 to 80 °C (-40 to 176 °F)
	Storage Temperature	-40 to 85 °C (-40 to 185 °F)
	Operating Humidity	10 to 95% non-condensing
	Maximum Ambient Surrounding Air Temp	80 °C
Certifications	FCC	Part 15 Class A
	CE	
	NEMA TS2	
Enclosure	Rating	IP30
	Mounting	DIN rail mount (35 mm)
	Dimensions (VESR4x4)	1.8 x 4.4 x 6.75 in (4.57 x 12.2 x 17.1 cm)
Power Supply	Voltage Requirements	10 to 58 VDC
	Power Consumption	6.0 watts maximum
Terminal Blocks	Wire Size	28 to 16 AWG
	Wire Type	Copper Wire Only
	Tightening Torque	5 KG-CM
	Wire Temp Rating	105 °C Minimum Sized for 60 °C Ampacity
	Note:	One Conductor Per Terminal

Controls, Indicators and Connector Specifications

Switches	Reset button	Hold in for 0 to 2 seconds for hardware reset Hold in for 2 to 10 seconds for Console Mode (Do a hardware reset or recycle power to exit Console Mode) Hold in for more than 10 seconds to reset to factory defaults
Indicators	Serial LED (one per port)	Color = Green On = Port open Flash = Data traffic
	Ethernet Link LED (one per port)	Color = Green On = When Connected Flashing = Data traffic
	Ethernet Speed LED (one per port)	Color = Yellow On = 100BaseTX Off = 10BaseT
	Ready LED	Color = Green On Solid = System Initializing Flash (once per second) = System OK Flash (twice per second) = System Re-boot Off = System NOT OK
Connectors	10BaseT/100BaseTX Ethernet	Single RJ-45F (8 pin)
	SC fiber	SC connector
	ST fiber	ST connector
	Serial	VESR4x4D: four DB-9M connectors VESR4x4T: four pluggable terminal blocks
	DC Power	3-position pluggable terminal block, or locking barrel connector

Serial Interface Specifications

Serial Interfaces	Mode Selection	RS-232/422/485 software selectable
	RS-232 lines	TXD, RXD, RTS, CTS, DTR, DSR, DCD, GND
	RS-422 lines	TXDA(-), TXDB(+), RXDA(-), RXDB(+), GND
	RS-485 lines (2 wire)	Data(-), Data(+), GND
	RS-485 lines (4 wire)	TXDA(-), TXDB(+), RXDA(-), RXDB(+), GND
	Baud Rates	75, 150, 300, 600, 1200, 2400, 4800, 7200, 9600, 14400, 19200, 28800, 38400, 57600, 115200, 230400
	Data Bits	5, 6, 7, 8
	Parity	None, even, odd, mark, space
	Stop bits	1, 1.5, 2
	Flow control	None, RTS/CTS, XON/XOFF
	RS-422/485 biasing	Auto 1K ohm pullups and pulldowns
	RS-422/485 termination	Termination with thru hole resistor (user supplied)
	RS-485 data control	Auto control via MCU

Network Specifications

Memory	Serial Memory Network Memory	8 KB per port 4 KB
I/P Port Addresses	5300 8888	Heartbeat & Configuration setting in TCP Mode (i.e. Pair Mode) VESR4x4 update
Network Communications	LAN	10/100 Mbps Auto-detecting 10BaseT or 100BaseTX
Network Physical Layer Standards	Ethernet	IEEE 802.3 autodetecting & auto MDI/MDX 10BaseT and 100BaseTX
Protocols Supported	IP Mode TCP/UDP UDP	TCP, IPv4, UDP, ARP, HTTP 1.0, ICMP/PING, DHCP/BOOTP Static, DHCP User definable Unicast or Multicast
Connection Modes		Server, Client, VCOM, Paired
Client Connection		At power up or upon data arrival
Search		Serial direct COM and Ethernet autosearch or specific IP
Diagnostics		Display PC IP, ping, test VCOM, save test config (text readable)
Firmware Upgrade		Via serial, Ethernet or auto web search
Character count		0 to 65535
Delimiters	Hex 1 Hex 2	01 to FF (begin buffering when hex 1 received) 01 to FF (send serial data if delimiter hex 2 is set and received)
Timeouts	Inter-character Serial Network Force transmit Max character count	0 to 65535 ms 0 to 65535 ms 0 to 65535 min 0 to 65535 ms 0 to 8192 bytes

TCP/UDP Ports Table

Port	Description	Comments
80/tcp	Always open for the web server.	<p>This port is used for configuration of the device using a web browser. This port is always open no matter how you configure the device.</p> <p>If you want to use this method to configure the device from outside of a firewall, then a firewall must allow incoming connections to this port.</p> <p>If you want to use this method to configure the device from the outside of a NAT, the NAT must be configured to forward to this port.</p>
771/tcp	This port is open when any serial port is configured for VCOM mode.	<p>This port is used for communications with the VCOM device driver installed on the computer. This port is open only if you configure any serial port for VCOM mode.</p> <p>If you want to use VCOM from outside of a firewall, then you must allow incoming connections on this port. If you want to use VCOM from outside of a NAT, then you must forward to this port.</p>
7000/tcp	Always open for serial server configuration over TCP.	<p>This port is used for configuration and firmware upgrade of the device using the serial server manager. This port is always open no matter how you configure the device.</p> <p>If you want to configure the serial server from outside of a firewall using the serial server manager, then the firewall must be configured to allow incoming connections on 7000/tcp and allow packets addressed to 7000/udp to be received</p> <p>Note: Configuring over 7000/udp is not supported.</p>

6000/tcp	This port is open when serial port 1 is configured for paired-mode server.	<p>These ports are used to transfer handshake line state and break state in paired mode configuration. These ports are open only if you configure the port for paired-mode server. Note that serial port 1 uses 60000/tcp, serial port 2 uses 60001/tcp, serial port 3 uses 60002/tcp and serial port 4 uses 60003/tcp. If a port is not configured for paired-mode server, then the corresponding port is not open.</p> <p>If you want to connect to a paired-mode server from outside of a firewall, then you must allow incoming connections on these ports.</p> <p>If you want to connect to a paired-mode server from outside of a NAT, then you must forward to these ports.</p>
60001/tcp	This port is open when serial port 2 is configured for paired-mode server.	As above
60002/tcp	This port is open when serial port 3 is configured for paired-mode server.	As above
60003/tcp	This port is open when serial port 4 is configured for paired-mode server.	As above
68/udp	This port is open when the network mode is DHCP.	<p>This port is used if you configure the device for DHCP mode (as opposed to Static IP). It is used to communicate with the DHCP server.</p> <p>This should only be used inside of a firewall or NAT.</p>
7000/udp	Always open for serial server configuration over UDP.	<p>These ports are used for configuration and firmware upgrade of the device using the serial server manager. These ports are always open no matter how you configure the device.</p> <p>If you want to configure the serial server from outside of a firewall using the serial server manager, then the firewall must be configured to allow incoming connections on 7000/tcp and allow packets addressed to 7000/udp to be received</p>
8899/udp	Always open for serial server discovery.	<p>This port is used for discovering serial servers. This port is always open no matter how you configure the device.</p> <p>Note: The device discovery only works on a local subnet. The port may not need to be configured in a firewall or NAT.</p>
Other	User-specified ports.	<p>Other TCP and UDP ports may be open depending on what you specify for the device configuration. THESE ARE THE PORTS SPECIFIED IN THE CONFIGURATION FILE.</p> <p>If you want to use these other ports from outside of a firewall, then you must allow these ports.</p> <p>If you want to use these other ports from outside of a NAT, then you must forward to these ports</p>

Appendix C: Dimensional Diagrams

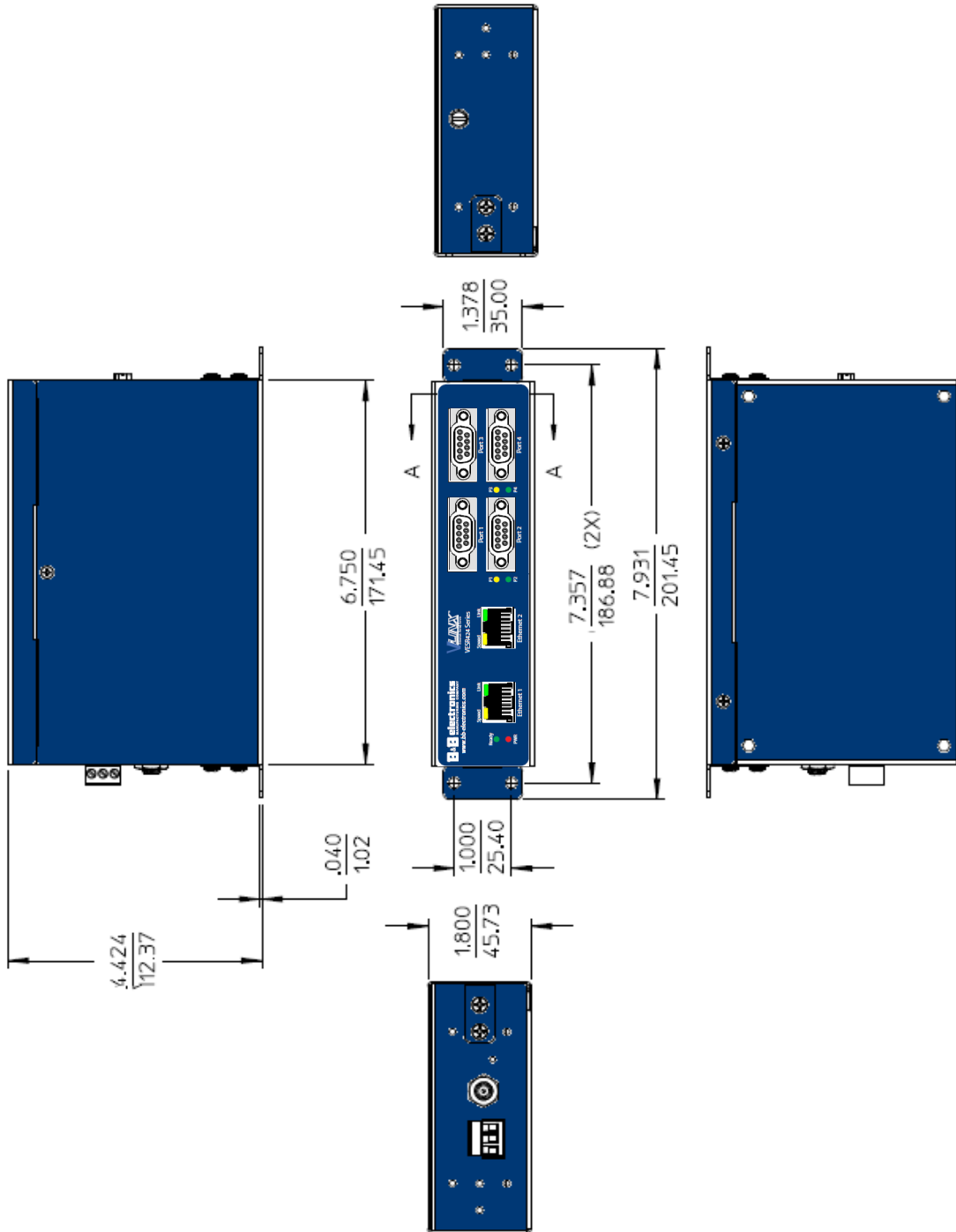
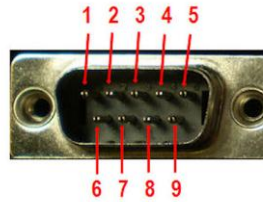


Figure 51. Dimensional Diagram of a VESR424 Serial Server (dimensions in inches & millimeters)

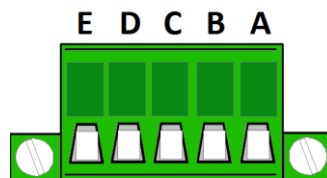
Appendix D: Connector Pinouts

DB-9M Connector



DB-9M Pin	RS-232	Direction (RS-232)	RS-422/485 4-Wire	RS-485 2-Wire
1	DCD	Input	RDA (-)	---
2	RD	Input	RDB (+)	---
3	TD	Output	TDB (+)	Data B (+)
4	DTR	Output	TDA (-)	Data A (-)
5	GND	---	GND	GND
6	DSR	Input	---	---
7	RTS	Output	---	---
8	CTS	Input	---	---
9	---	---	---	---

Terminal Block

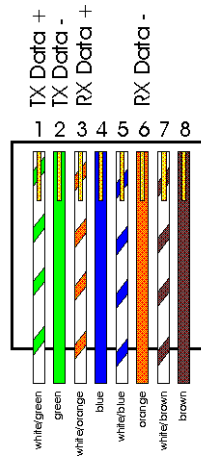


Terminal	RS-232	Direction (RS-232)	RS-422	RS-485
A	RTS	Output	TDA (-)	Data A (-)
B	TD	Output	TDB (+)	Data B (+)
C	CTS	Input	RDA (-)	---
D	RD	Input	RDB (+)	---
E	GND	---	GND	GND

Note 1: In the RS-422 mode, TX lines are outputs and RX lines are inputs. Connect the serial server TXB(+) line to the RXB(+) line of the serial device, and the serial server TXA(-) to the RXA(-) of the serial device.

Note 2: Ground is signal ground and provides a common mode reference for the RS-422 Receiver and Transmitters.

Standard Ethernet Cable RJ-45 Pinout



RJ-45 Pin	Signal	Wire Color	RJ-45 Pin
1	TX+	White-Green	1
2	TX+	Green	2
3	RX+	White-Orange	3
4	Not used	Blue	4
5	Not used	White-Blue	5
6	RX-	Orange	6
7	Not used	White-Brown	7
8	Not used	Brown	8