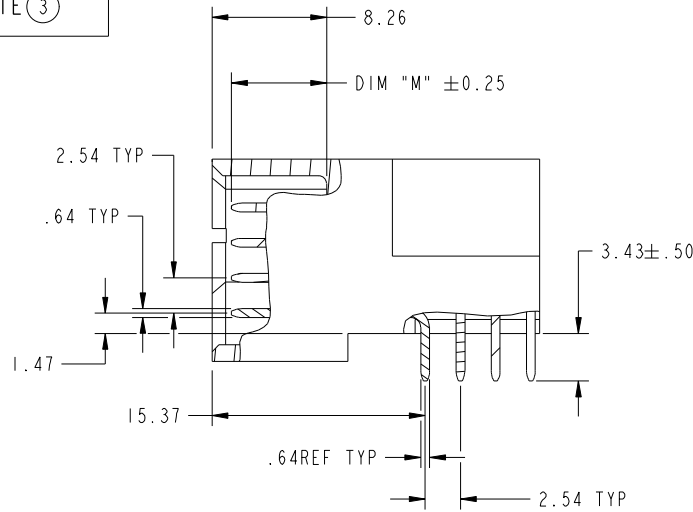


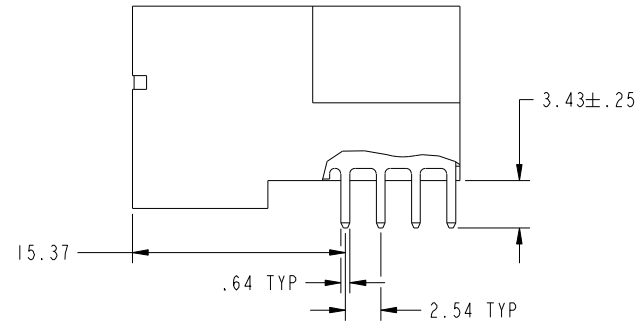
Tous droits strictement réservés. Reproduction ou communication à des tiers interdite sous quelque forme que ce soit sans autorisation écrite du propriétaire. Propriété de c.FCI. Droits de reproduction FCI.

All rights strictly reserved. Reproduction or issue to third parties in any form whatever is not permitted without written authority from the proprietor. Property of FCI. Copyright FCI.

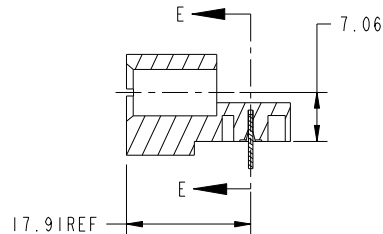
PRODUCT NUMBER
51730-145--
NOTE (3)



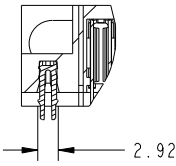
BROKEN-OUT SECTION A-A
SCALE 2:1



BROKEN-OUT SECTION B-B
SCALE 2:1



SECTION C-C



SECTION E-E

mat'l code		SEE NOTE 2		tolerances unless otherwise specified		CUSTOMER		FCI		www.ficconnect.com				
ltr	ecn no.	dr	date	linear	0.X ±0.50	COPY		title 2P + 24S + 2P RIGHT ANGLE SOLDER HEADER						
A					0.XX ±0.25	projection						product family PwrBlade		code 213
				angles	0.XXX ±0.10	INCH/MM						size	dwg no	sheet 2 of 4
				dr	0° ±2°	scale		A		51730-145				
				enr	Sincere He 03/21/08	1:1								
				chr	Sincere He 03/21/08									
				appd	Gary Hsieh 03/21/08									
					Joseph Hsia 03/21/08									
sheet index	revision sheet													

cage code 22526

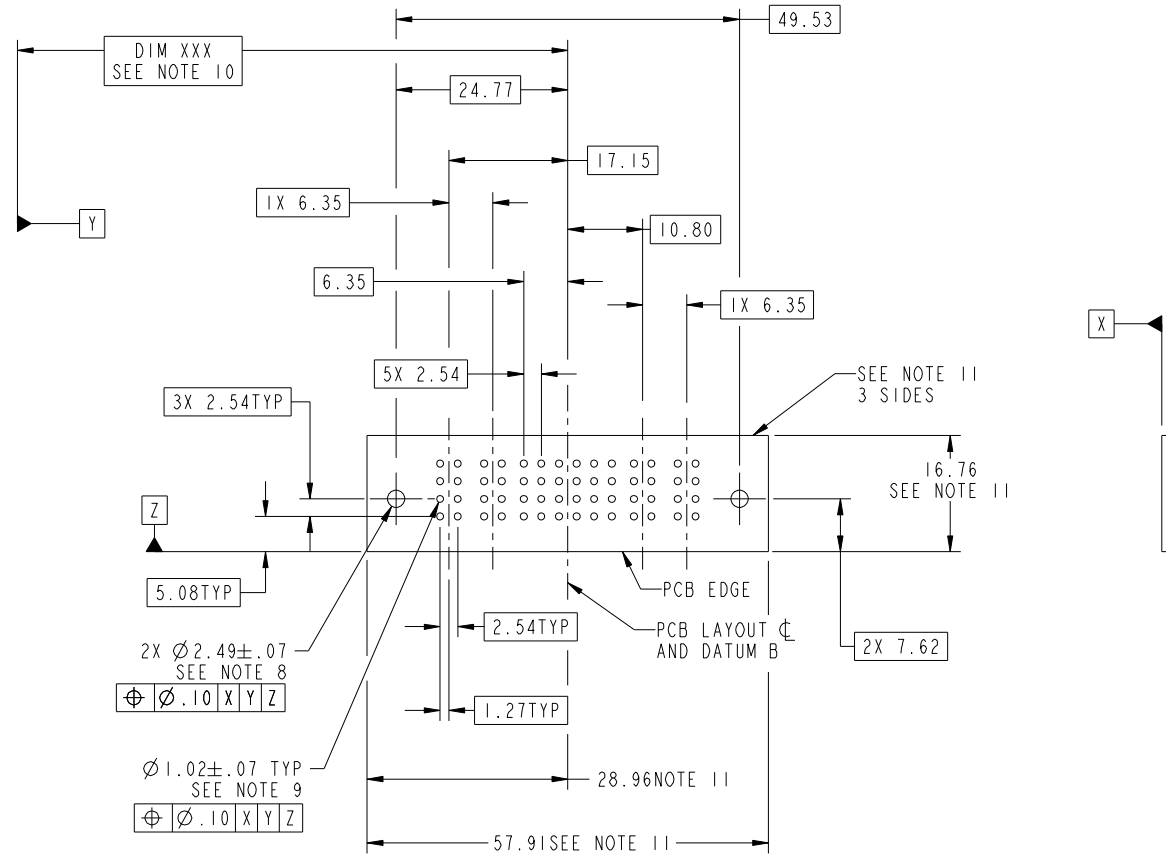
Pro/E

Tous droits strictement réservés. Reproduction ou communication à des tiers interdite sous quelque forme que ce soit sans autorisation écrite du propriétaire. Propriété de c.FCI. Droits de reproduction FCI.



All rights strictly reserved. Reproduction or issue to third parties in any form whatsoever is not permitted without written authority from the proprietor. Property of FCI. Copyright FCI.

PRODUCT NUMBER
51730-145--
NOTE ③



RECOMMENDED PCB LAYOUT

mat'l code				SEE NOTE 2		tolerances unless otherwise specified		CUSTOMER		FCI	
ltr	ecn no.	dr	date	linear	0.X ±0.50	projection		COPY		www.fciconnect.com	
A				angles	0.XX ±0.25	INCH/MM		title		2P + 24S + 2P	
				dr	0.XXX ±0.10	scale		RIGHT ANGLE SOLDER HEADER		product family	
				enr	0° ±2°	1:1		PwrBlade		code	
				chr	Sincere He 03/21/08			size		213	
				appd	Sincere He 03/21/08			dwg no		sheet	
					Gary Hsieh 03/21/08			A		3 of 4	
					Joseph Hsia 03/21/08			51730-145			
sheet index	revision sheet										

Pro/E

cage code 22526

Tous droits strictement reserves. Reproduction ou communication a des tiers interdite sous quelque forme que ce soit sans autorisation écrite du propriétaire. Propriete de c FCI. Droits de reproduction FCI.

All rights strictly reserved. Reproduction or issue to third parties in any form whatever is not permitted without written authority from the proprietor. Property of FCI. Copyright FCI.



PRODUCT NUMBER
51730-145--
NOTE (3)

NOTES:

1. DIMENSIONS AND TOLERANCES ARE IN ACCORDANCE WITH ASME Y14.5M, 1994 UNLESS OTHERWISE SPECIFIED.

CONNECTOR NOTES:

(2) HOUSING MATERIAL: UL 94 V-0 GLASS FILLED HIGH-TEMP THERMOPLASTIC
POWER CONTACT MATERIAL: COPPER ALLOY
SIGNAL PIN MATERIAL: COPPER ALLOY

3. PLATING:

51730-145, 51730-145LF, PLATING SPEC. SEE PRINT:10064183

(4) MANUFACTURER'S NAME, P/N, AND DATE CODE TO APPEAR ON THIS SURFACE.

5. PRODUCT SPECIFICATION GS-12-149.
APPLICATION SPECIFICATION BUS-20-067.

6. PACKAGED IN TRAYS.

PCB NOTES:

7. ALL HOLE DIAMETERS ARE FINISHED HOLE SIZE.

(8) MOUNTING HOLES, WHERE APPLICABLE, ARE UNPLATED.

(9) $\varnothing .0453 \pm .0010$ [1.151 \pm 0.025] DRILLED HOLES PLATED WITH
.0003 [0.008] MIN SnPb OVER .001 [0.03]
TO .003 [0.08] Cu PLATING TO ACHIEVE
 $\varnothing .040 \pm .003$ [1.02 \pm .07] HOLE.

(10) "DIM XXX" TO BE DETERMINED BY THE CUSTOMER.

(11) CONNECTOR KEEP-OUT ZONE.

mat'l code		SEE NOTE 2		tolerances unless otherwise specified		CUSTOMER		FCI		www.fciconnect.com	
ltr	ecr no.	dr	date	linear	0.X ± 0.5	COPY					
A					0.XX ± 0.25	projection		title 2P + 24S + 2P			
				angles	0.XXX ± 0.10			RIGHT ANGLE SOLDER HEADER			
				dr	0° ± 2°	INCH/MM		product family PwrBlade		code 213	
				enr	Sincere He 03/21/08	scale		size dwg no		sheet 4 of 4	
				chr	Gary Hsieh 03/21/08	1:1		A 51730-145			
				appd	Joseph Hsia 03/21/08						
sheet index	revision sheet										

cage code 22526

Pro/E