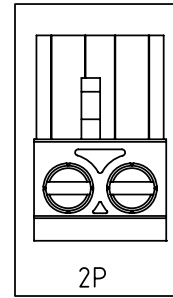
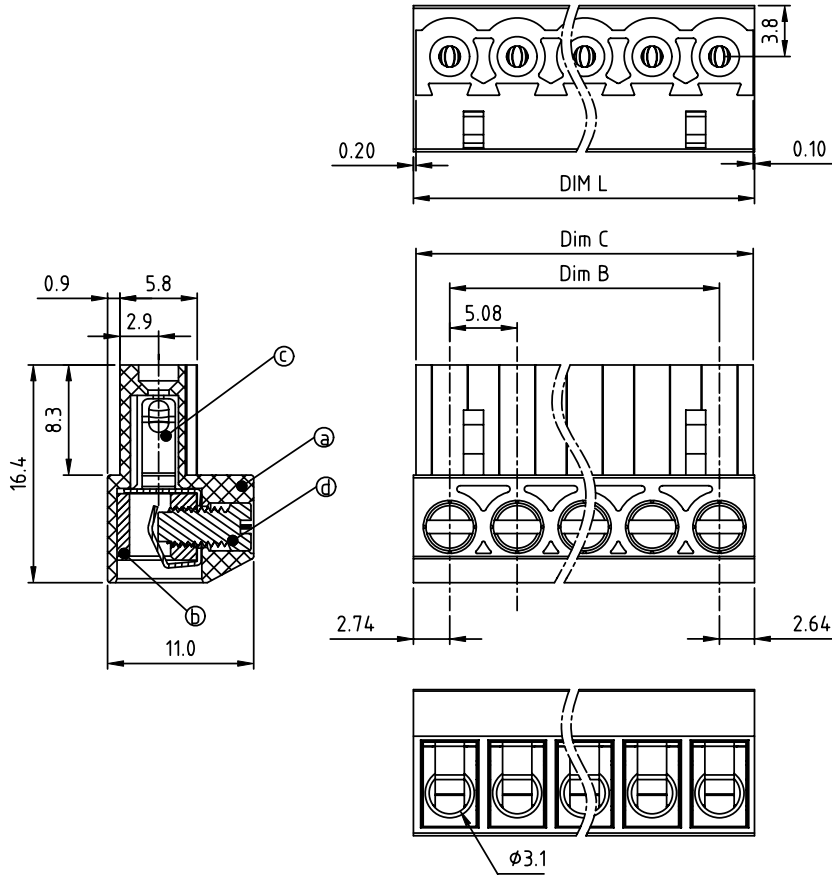


PRODUCT NUMBER	PITCH
EZxx51x000J0G	5.08 mm



- Material:
- Item ① Terminal(housing): Thermoplastic (UL94V-0)
 - Item ② Clamp: Brass(CuZn) Ni plated
 - Item ③ Female contact: PhBz Tin plated
 - Item ④ Terminal Screw: Steel zinc plated.

- Electrical: cULus
- Voltage rating: 300 V
 - Current rating: 15 A
 - Wire range:
 - Solid wire(AWG):12-22
 - Stranded wire(AWG):12-22
 - Torque: 4.3 Lb-In
 - Screw:M3
 - Wire strip length:7-8 mm
 - Withstanding Voltage:1.6KV
 - Operating temperature:-40°C to +115°C
 - Safety Approval:

PART NO.: EZ xx 51 x 0 00J0 G

N=NUMBER OF POLES

Dim L=N×5.08+0.3
Dim B=(N-1)×5.08
Dim C=N×5.08

POLES	Tolerance
2P-6P	±0.15
7P-12P	±0.20
13P-18P	±0.25
19P-24P	±0.30

Solid block	No. of poles	Color	RoHS compliant (lead<4%) In copper Alloy
0	2	Black (RAL9005)	
02	3	Red (RAL3001/D)	
03	4	Orange(RAL2011/P)	
...	5	Yellow(RAL1018/A)	
24	6	Green(RAL6018/T)	
	8	Blue (RAL5015/A)	
	9	Grey(RAL7035/D)	
	9	White(RAL1102)	
	C	Green(RAL6018/U)	

mat'l. code		surface ASME Y14.5	tolerance ASME Y14.5	projection 	product family TERMINAL BLOCK
ltr	ecn no	dr	date	tolerances unless otherwise specified	title
				angles $X \pm 0.5$	TERMINAL BLOCK PLUGGABLE PLUG, WITHOUT FLANGE
				$X.X \pm 0.3$	
				$X^* \pm 1^*$	scale
		dr	EVIN ZHONG	041814	dwg no EZxx51x000J0G sheet 1 of 1 size A4 type CUSTOMER Drawing
		enr	EVIN ZHONG	041814	
		chr	HANKE FENG	041814	
		appd	SHI JUN	041814	
sheet index	revision sheet	A	1		